

OWNER'S DEDICATION

Know all men by these presents that George Sturholm and Lee S. Nebeker, being respectively the President and the Secretary of Trona Heights Development Corporation, the owner of the tract of land described as TRONA HEIGHTS PLAT B, A Addition to the Town of Green River, Wyoming, as shown on this map, have caused the same to be subdivided into lots, blocks and streets and do hereby dedicate to the perpetual use of the public all streets shown hereon.

Witness our hands this 10th day of Aug. 1960

TRONA HEIGHTS DEVELOPMENT CORPORATION

By George Sturholm
President
By Lee S. Nebeker
Secretary

£ A - 1.300'
£ A - 1.500'
£ A - 4.750'

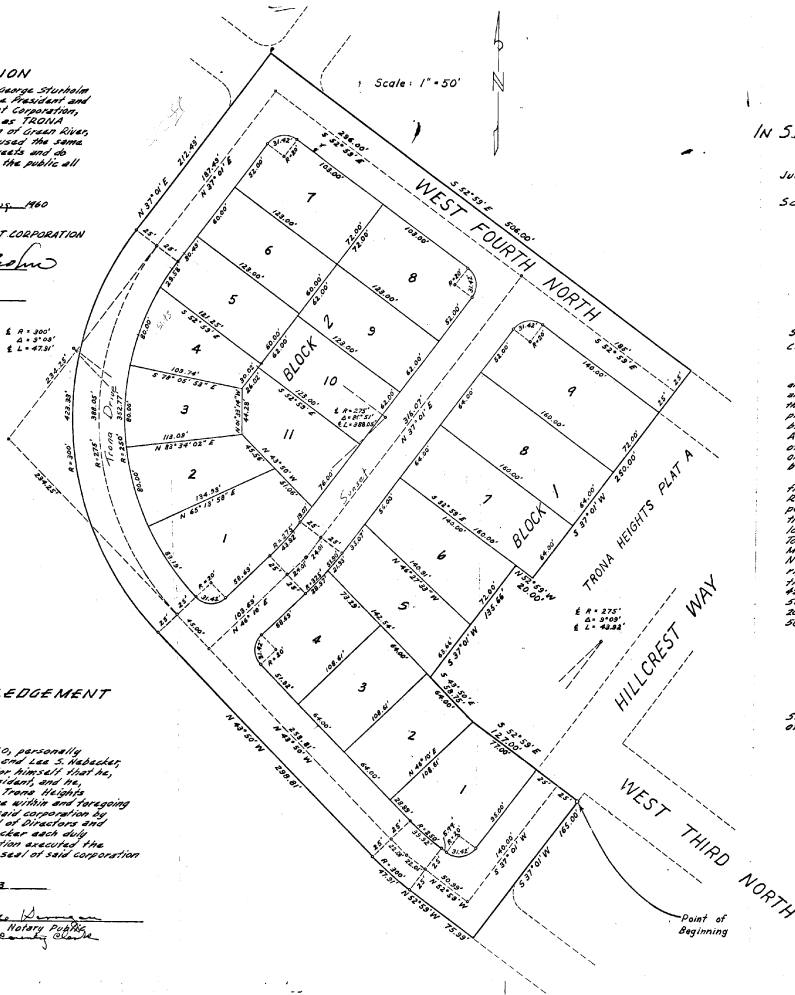
CORPORATE ACKNOWLEDGEMENT

State of Wyoming } ss
County of Sweetwater }

On this 10th day of August, 1960, personally appeared before me George Sturholm and Lee S. Nebeker, who being duly sworn did say unto me for himself that he, the said George Sturholm, is the president, and he, Lee S. Nebeker, is the secretary of Trona Heights Development Corporation, and that the within and foregoing instrument was signed in behalf of said corporation by authority of a resolution of its Board of Directors and said George Sturholm and Lee S. Nebeker each duly acknowledged to me that said corporation executed the same and that the seal affixed is the seal of said corporation

My commission expires 1-2-63

John W. ...
Notary Public
County of Sweetwater



TRONA HEIGHTS PLAT B

ADDITION TO GREEN RIVER, WYOMING
IN SW 1/4 SEC. 15, T.18 N.; R.10 W.; 6th PRINCIPAL MON.

July 1960

Caldwell, Richards & Swanson, Inc.
ENGINEERS
Salt Lake City, Utah

Scale 1 in = 50 ft

ENGINEER'S CERTIFICATE

State of Wyoming } ss
County of Sweetwater }

I, Albert Z. Richards Jr., a registered Professional Engineer, and Land Surveyor, as prescribed by the State of Wyoming, and holding certificate No. 365, do hereby certify that by authority of the Trona Heights Development Corporation, owners of the described property, have subdivided the land shown on this map into 11 blocks and streets to be known as TRONA HEIGHTS PLAT B, A Addition to the Town of Green River, and that the dimensions of all lots and blocks are correctly shown to a scale of 1"=50' on this map. The boundary description of this subdivision being correctly described as follows:

Beginning at a point N 52° 29' 14" 00"E and S 37° 01' 14" 14" from the northwesterly corner of Lot 6, Block 6, of Union Pacific Railroad Company's Third Addition to Green River, Town (Said Addition to be known as Trona Heights Plat A) Township 18 North, Range 10 West, of the Sixth Principal Meridian, and running thence S 37° 01' 14" 14" W 165.00 ft; thence N 82° 29' 14" 14" E 252.49 ft; thence along a 300.00 ft radius curve to the right a distance of 47.71 ft; thence N 49° 50' 14" 14" W 258.00 ft; thence along a 300.00 ft radius curve to the right a distance of 42.89 ft; thence N 57° 01' 14" 14" E 252.49 ft; thence S 52° 59' 14" 14" E 306.00 ft; thence S 87° 01' 14" 14" W 250.00 ft; thence N 52° 59' 14" 14" E 306.00 ft; thence S 37° 01' 14" 14" W 186.44 ft; thence S 49° 50' 14" 14" E 25.75 ft; thence S 32° 29' 14" 14" E 121.00 ft to the point of beginning.

A. Z. Richards Jr.
Registered Engineer No. 365

Subscribed and sworn to before me this 30 day of July, 1960

Lee S. Nebeker
Notary Public
DISTRICT COURT COMMISSIONER

Approval:

Presented to the Mayor & Town Council of this town of Green River, Wyoming and approved this 10 day of August, 1960.

Amundson Clerk
Richardson Mayor

