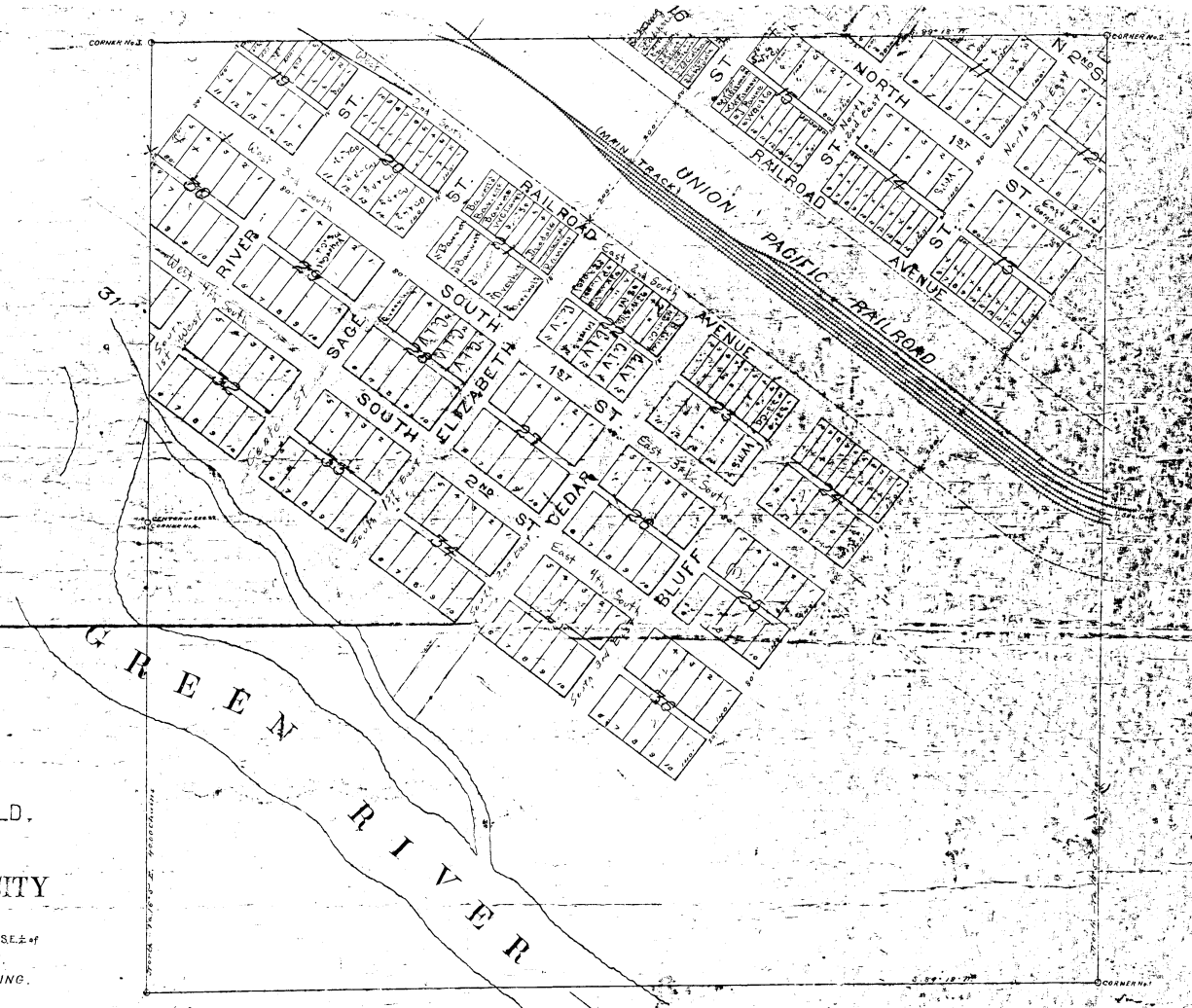


June 11<sup>th</sup>  
 1897  
 A. M. J. [unclear]  
 13 of John W. Sleeper's Survey



MAP  
 OF THE  
 LANDS OF S. I. FIELD,  
 SHOWING  
 THE PORTION OF  
 GREEN RIVER CITY  
 UPON THE SAME.  
 BEING THE S<sub>2</sub> of N.E. & S.W. of SE. & of  
 SEC. 22, T. 18 N., R. 107 W.  
 SWEETWATER CO WYOMING.  
 SURVEYED & DRAWN  
 BY  
 R. BLACKSTONE  
 JUNE 1897.

Scale 200 ft. to one inch.

- Description of Corners.*
- No. 1. White Sandstone 22° 51' 18" - set 18" deep - started with a + on top. S.W. on East 1/4 Sec. 22, N. 107 W.
  - No. 2. White Sandstone 24° 2' 9" - set 18" deep - started with a + on top. S.W. on East 1/4 Sec. 22, N. 107 W.
  - No. 3. White Sandstone 24° 51' 41" - set 18" deep - started with a + on top. S.W. on East 1/4 Sec. 22, N. 107 W.
  - No. 4. White Sandstone 18° 22' 2" - set 18" deep - started with a + on top. S.W. on East 1/4 Sec. 22, N. 107 W.
  - No. 5. White Sandstone 18° 22' 2" - set 18" deep - started with a + on top. S.W. on East 1/4 Sec. 22, N. 107 W.

I, Richard Blackstone, do solemnly swear that the above map of the S<sub>2</sub> of N.E. & S.W. of SE. & of SEC. 22, T. 18 N., R. 107 W. in Wyoming Territory represents the true and correct shape of said lands; that it shows the correct intention of the owner of said lands with the boundary lines of the lots, and that of the Green River; and that I have the correct intention of the owner of the Union Pacific Railroad to locate the tracks of said road through said lands with the best of my knowledge and belief.

Richard Blackstone, Surveyor

Subscribed and sworn to before me at Green River, Wyoming Territory, this 11th day of June 1897.

J. P. [unclear] COUNTY CLERK  
 XX 1897  
 101