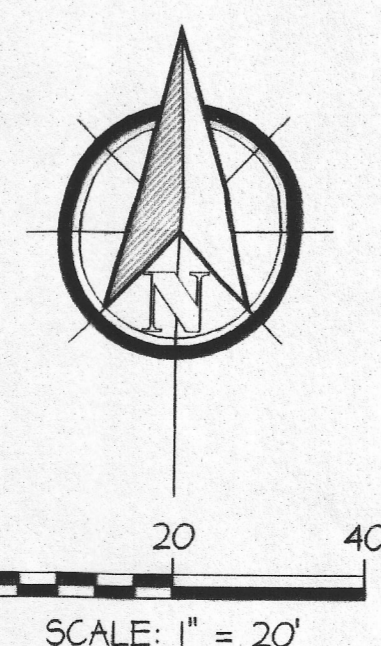
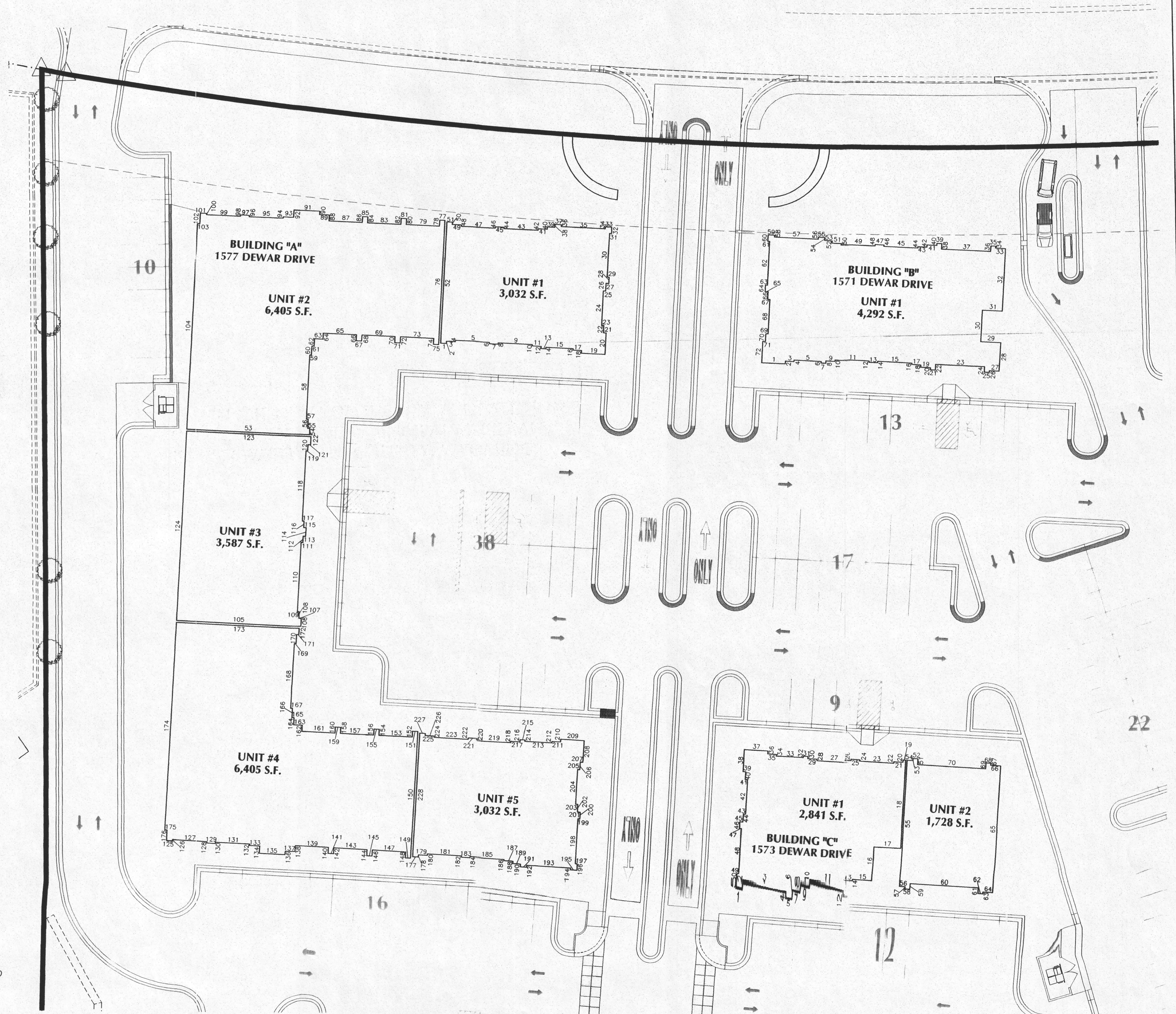


# CONDOMINIUM MAP - REVISION NO. 1 - BUILDINGS "A", "B" AND "C"

A PARCEL LOCATED IN THE NE1/4 OF THE NW1/4 OF SECTION 3,  
T. 18 N., R.105 W., OF THE SIXTH PRINCIPAL MERIDIAN,  
ROCK SPRINGS, SWEETWATER COUNTY, WYOMING

COMMERCE CENTRE - CONDOMINIUM MAP

BUILDING "A"	0.515 ACRES	5 UNITS
BUILDING "B"	0.098 ACRES	1 UNIT
BUILDING "C"	0.105 ACRES	2 UNITS



CHOICE ENGINEERING SERVICES

404 "N" Street - Suite 201 | Rock Springs, WY 82901  
Phone 307-362-6065 | Fax 307-362-6064

DATE OF PREPARATION: 11/06/09

RECORDED 12-31-2009 AT 11:30 AM BY [unreadable]