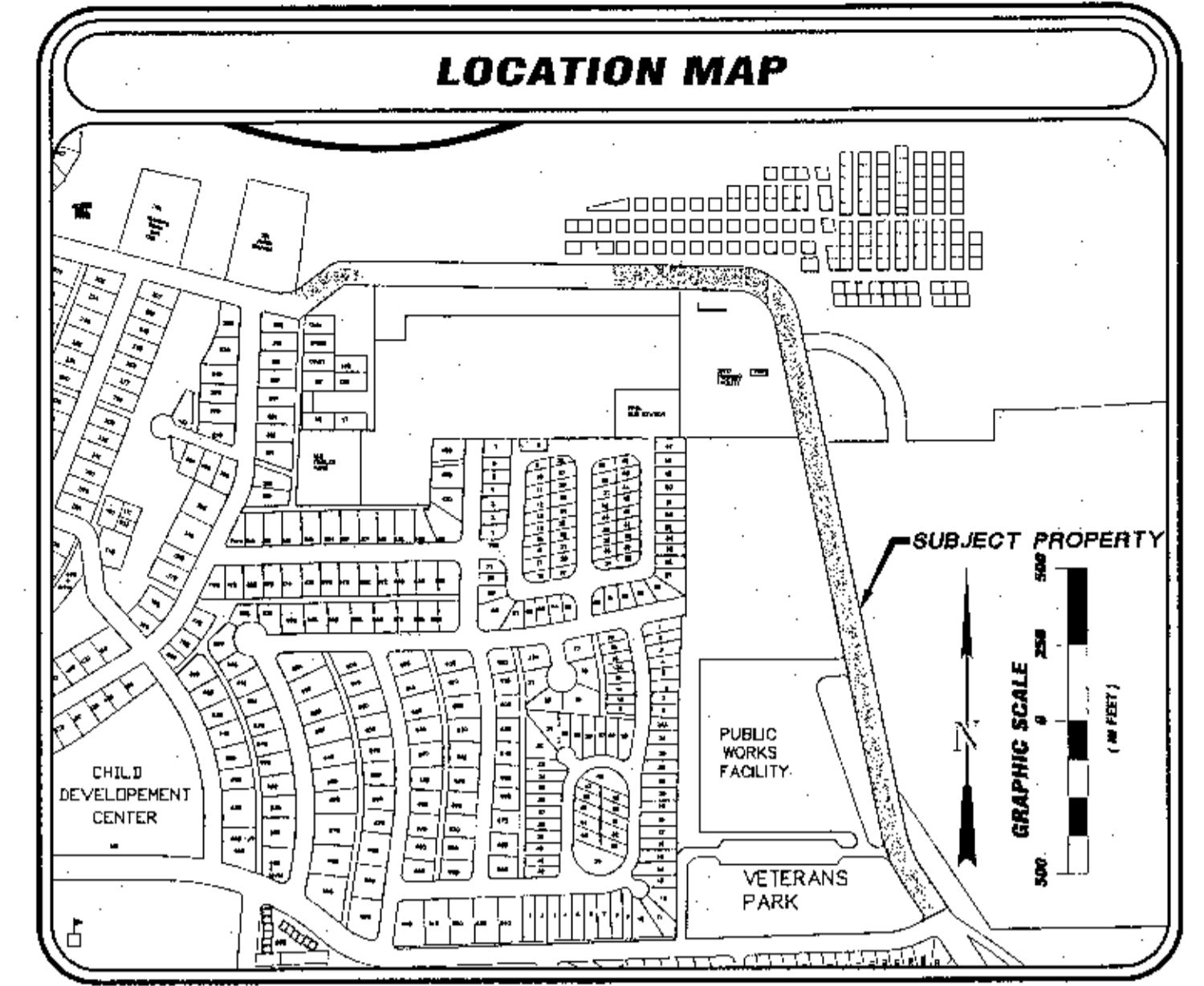


**FINAL PLAT of
EAST TETON BOULEVARD
ADDITION
A TRACT of LAND LOCATED in
LOTS 4, 5, & 7 of SECTION 26,
and LOT 1 of SECTION 27,
T18N, R107W, 6th P.M.
CITY of GREEN RIVER
SWEETWATER COUNTY,
WYOMING**

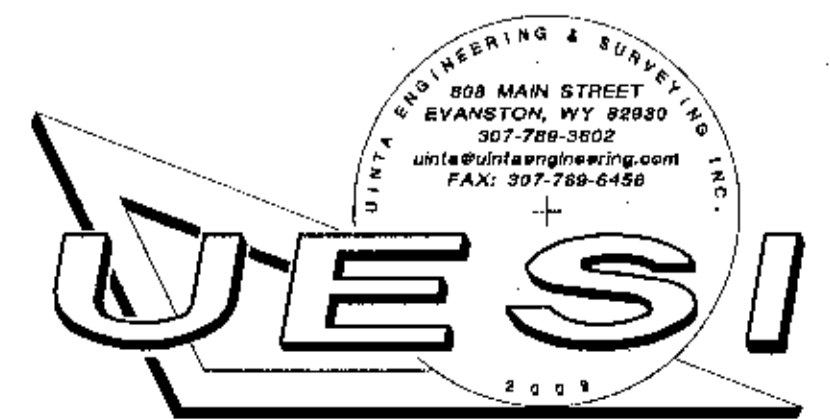
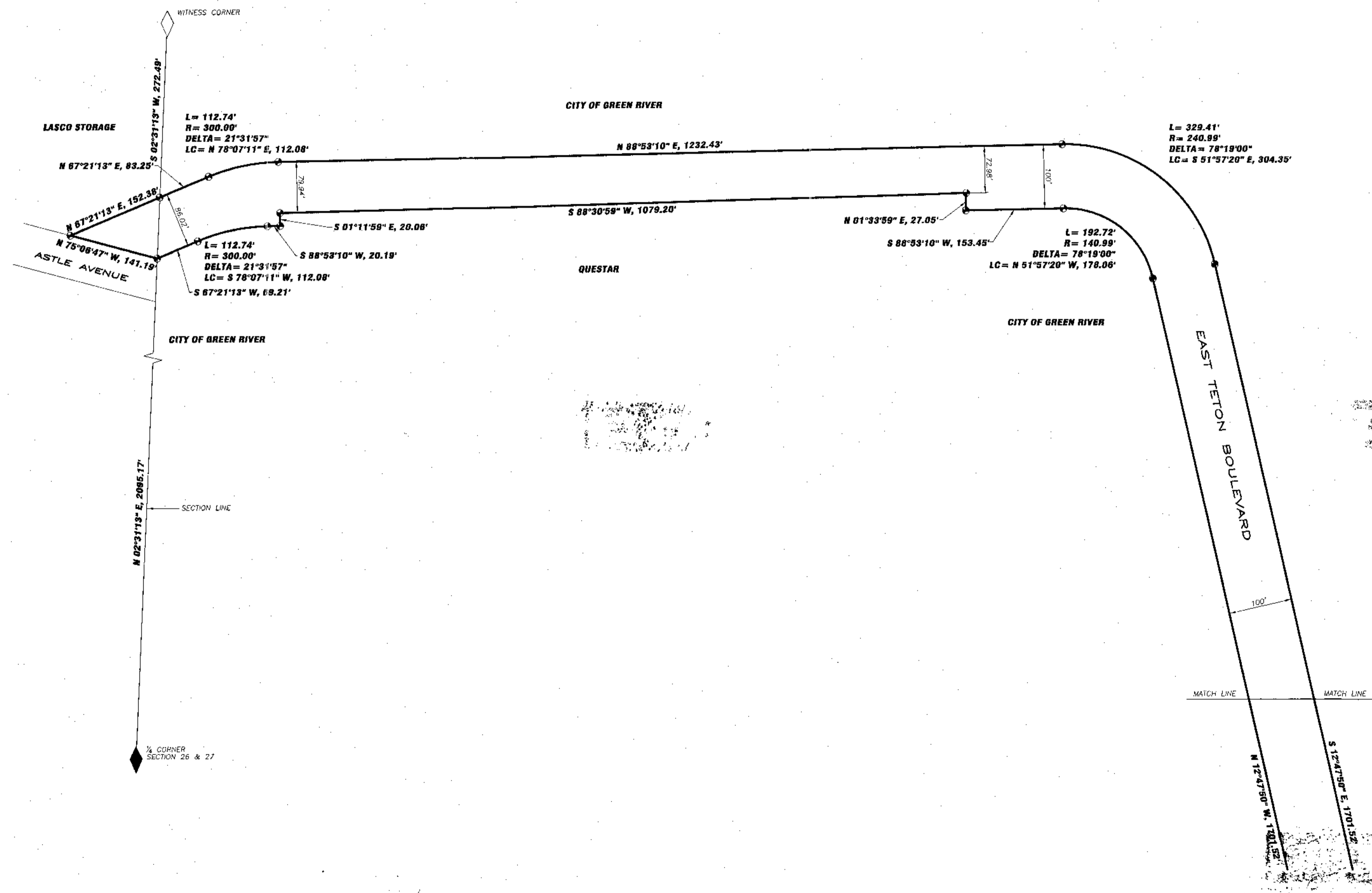


T18N R107W

LEGEND

- ⊕ SET 3/4" X 30" STEEL BAR WITH 3-1/4" ALUMINUM CAP INSCRIBED "UNTA ENGINEERING & SURVEYING INC. CLOEY C. WALL PLS 482 2009"
- ◇ WITNESS CORNER
- ◆ U.S.P.L.S.S. CORNER

UNTA ENGINEERING & SURVEYING INC. 2009
RECORDED 11-24-2009 AT 03:08 PM FILE# 171587 304 0000 PGM 0000
STEVEN DALE DAVIDS, CLERK OF SWEETWATER COUNTY, WY Page 2 of 2



DATE: 5/19/09 JOB #: 09-84-02 FILE: 09-84-02
DRAWN BY: Mick Newman SURVEYOR: Cloey Wall
REVISED 10/15/09
SHEET: 2 of 2