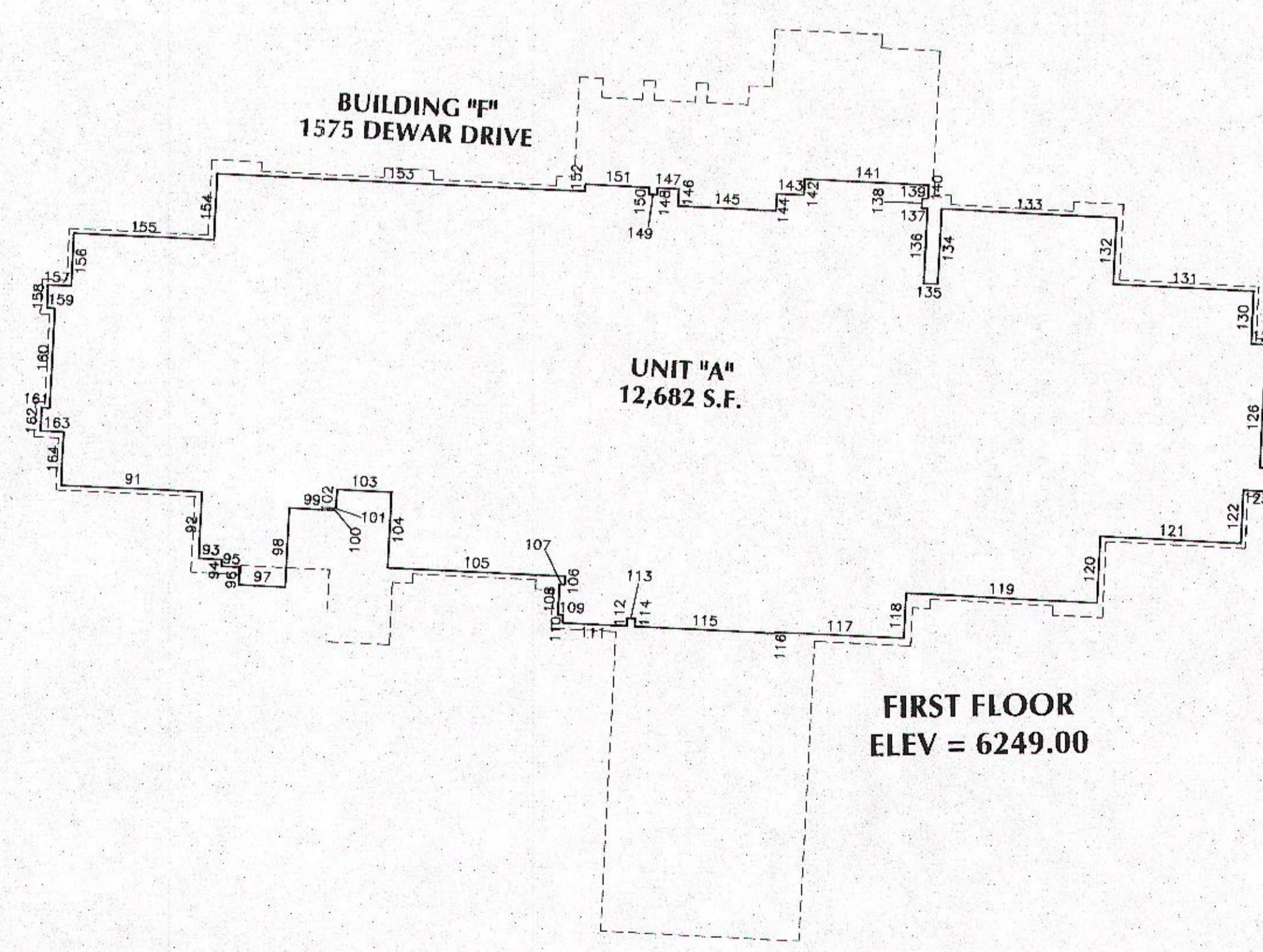
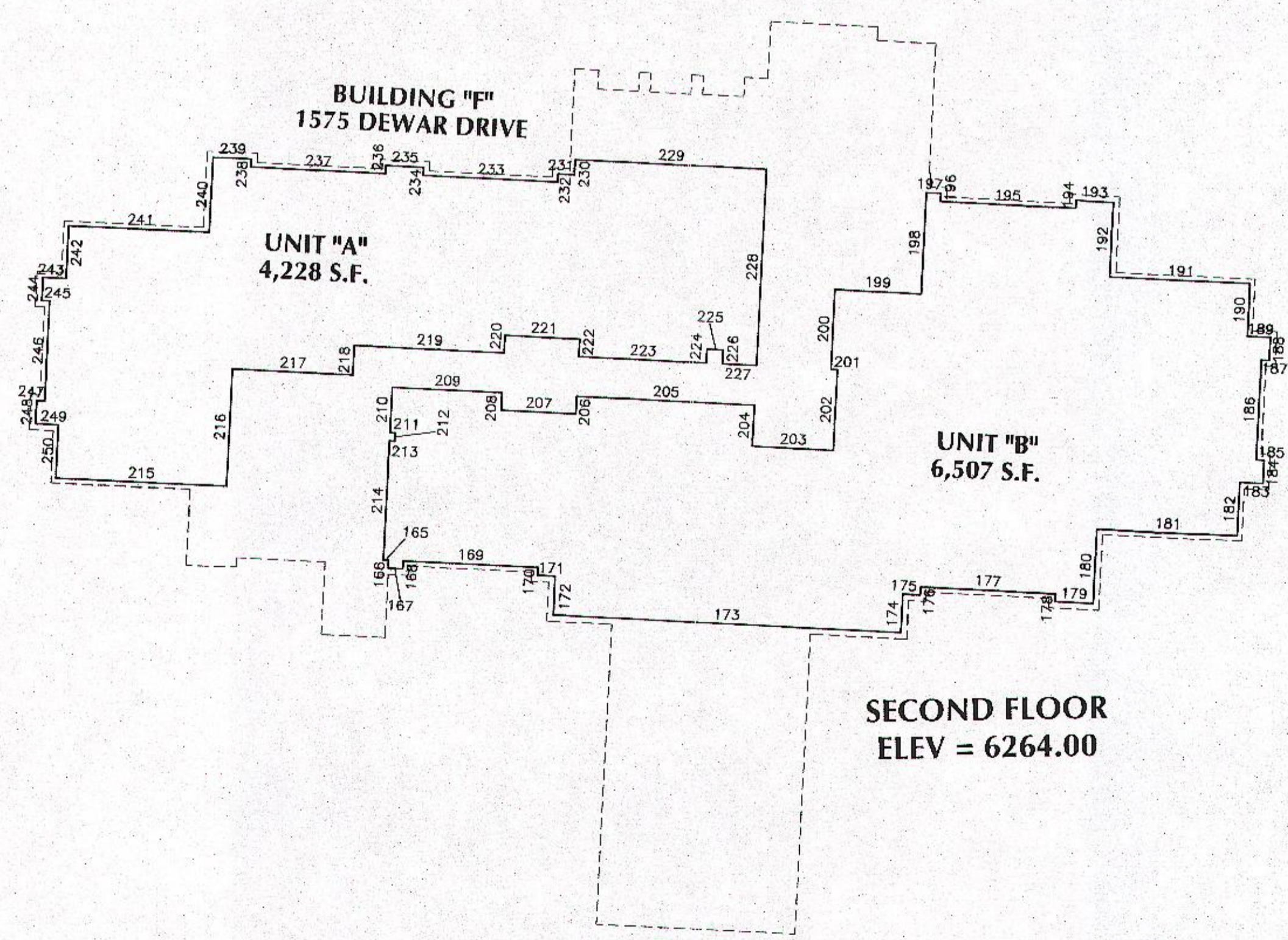
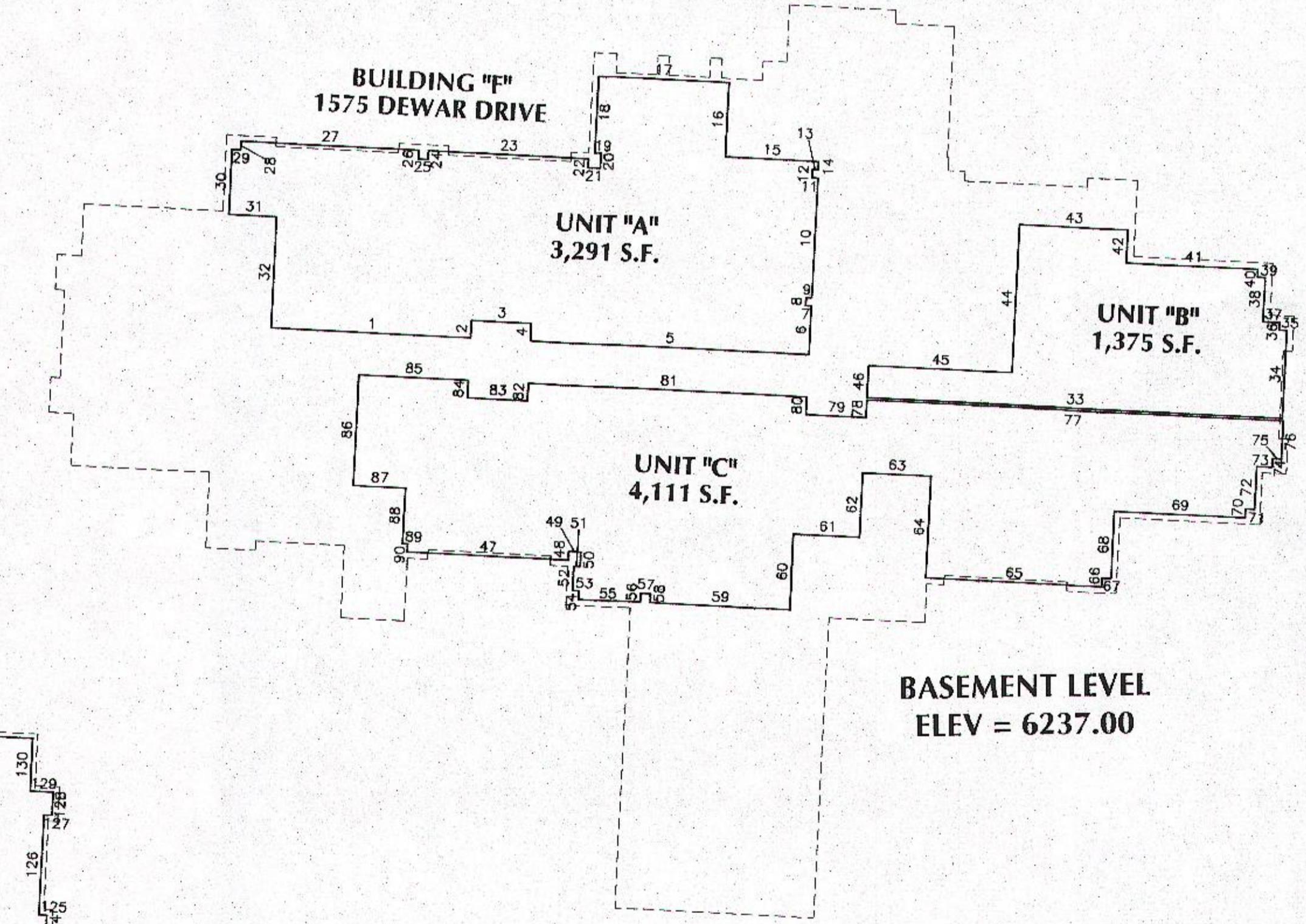
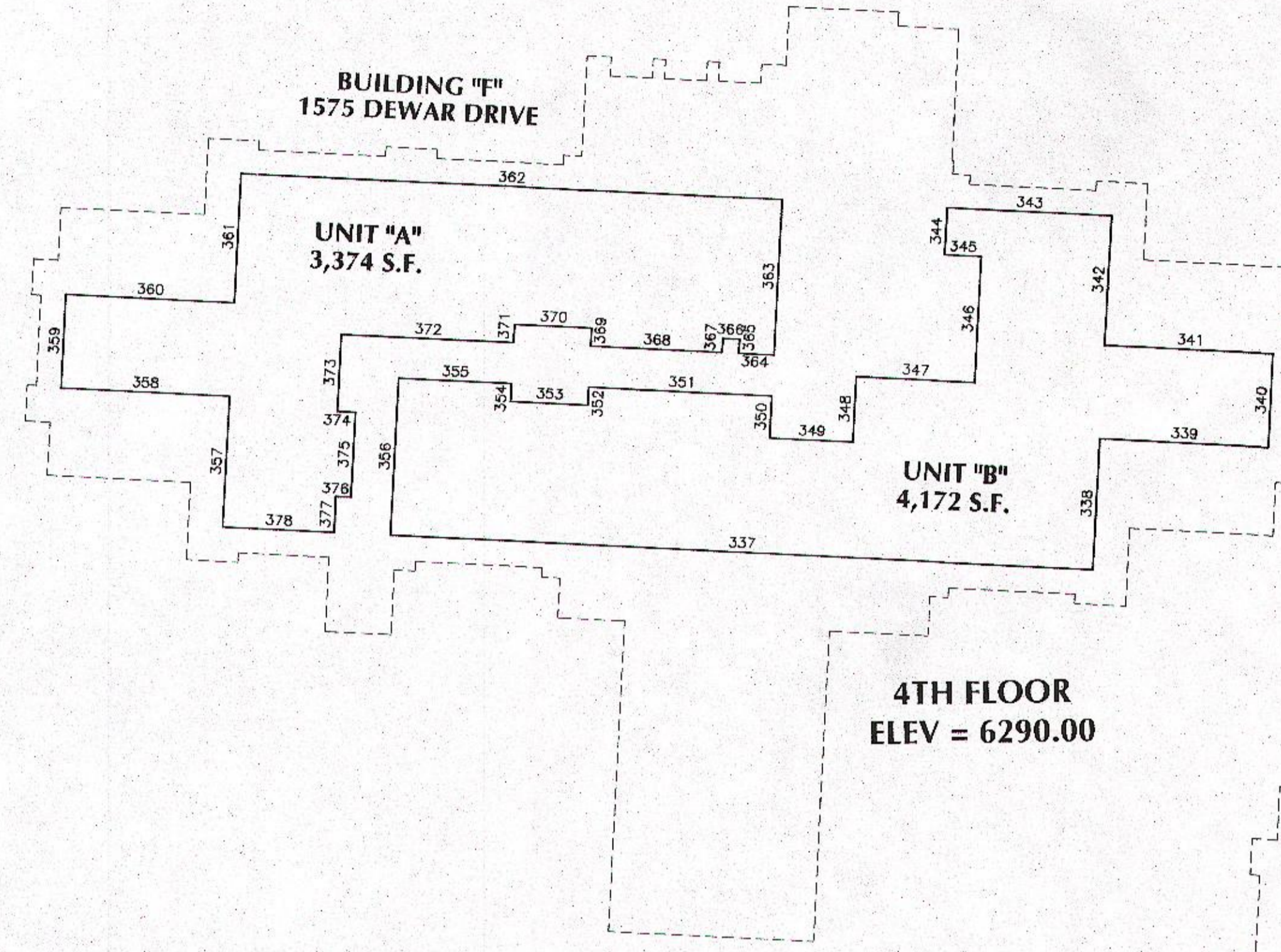
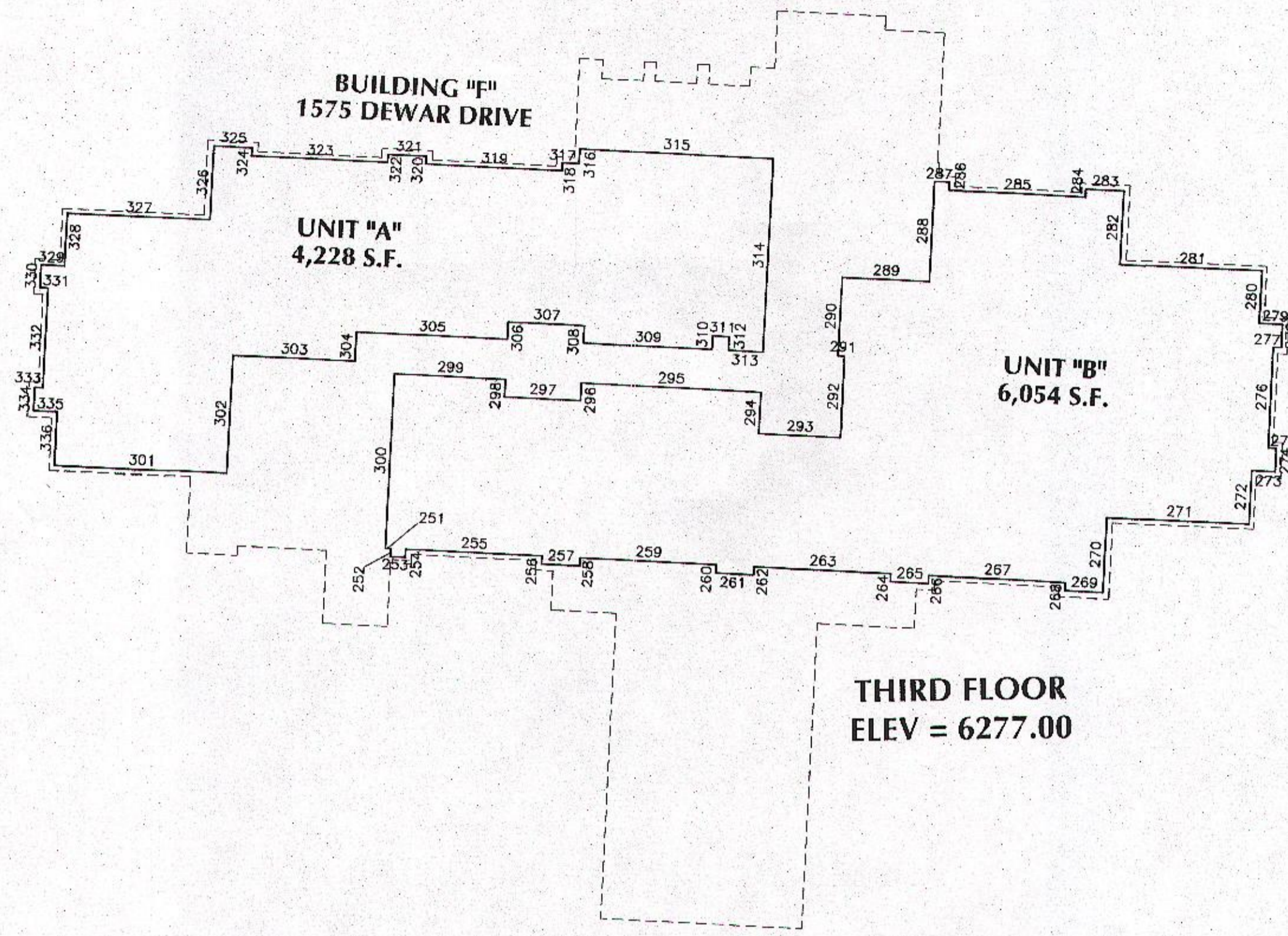


# CONDOMINIUM MAP - BUILDING "F"

A PARCEL LOCATED IN THE NE1/4 OF THE NW1/4 OF SECTION 3,  
T. 18 N., R.105 W., OF THE SIXTH PRINCIPAL MERIDIAN,  
ROCK SPRINGS, SWEETWATER COUNTY, WYOMING

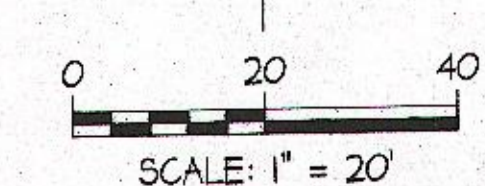
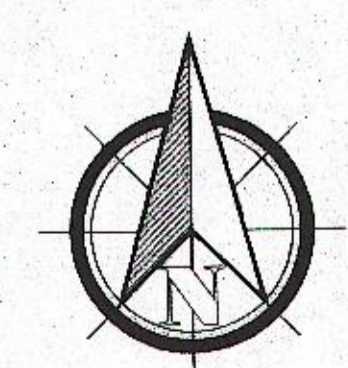
COMMERCE - CONDOMINIUM MAP		
BUILDING "F" - BASEMENT	0.201 ACRES	3 UNITS
BUILDING "F" - 1ST FLOOR	0.291 ACRES	1 UNIT
BUILDING "F" - 2ND FLOOR	0.246 ACRES	2 UNITS
BUILDING "F" - 3RD FLOOR	0.236 ACRES	2 UNITS
BUILDING "F" - 4TH FLOOR	0.173 ACRES	2 UNITS



CHOICE ENGINEERING SERVICES

404 "N" Street - Suite 201 | Rock Springs, WY 82901  
Phone 307-362-6065 | Fax 307-362-6064

DATE OF PREPARATION: 08/26/09



RECORDED 9/03/2009 AT 04:55 PM RECH 1567141 BKN 0000 FOR 0000  
STEVEN DALE DAVIS, CLERK OF SHEETWATER COUNTY, WY Page 7 of 9