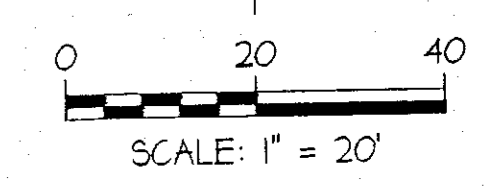
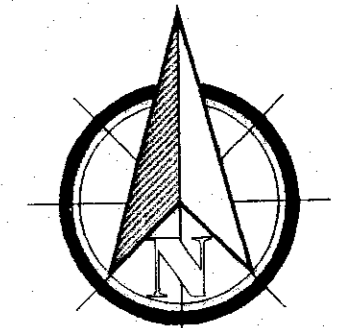
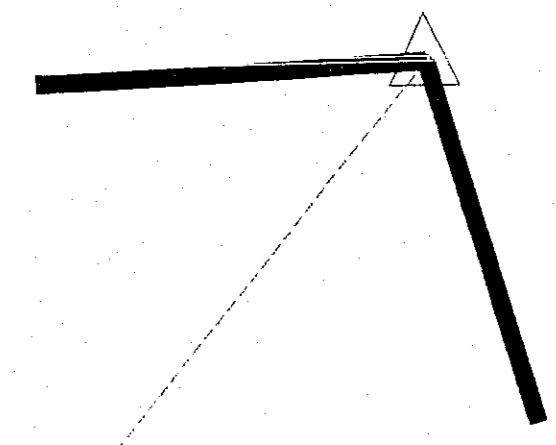
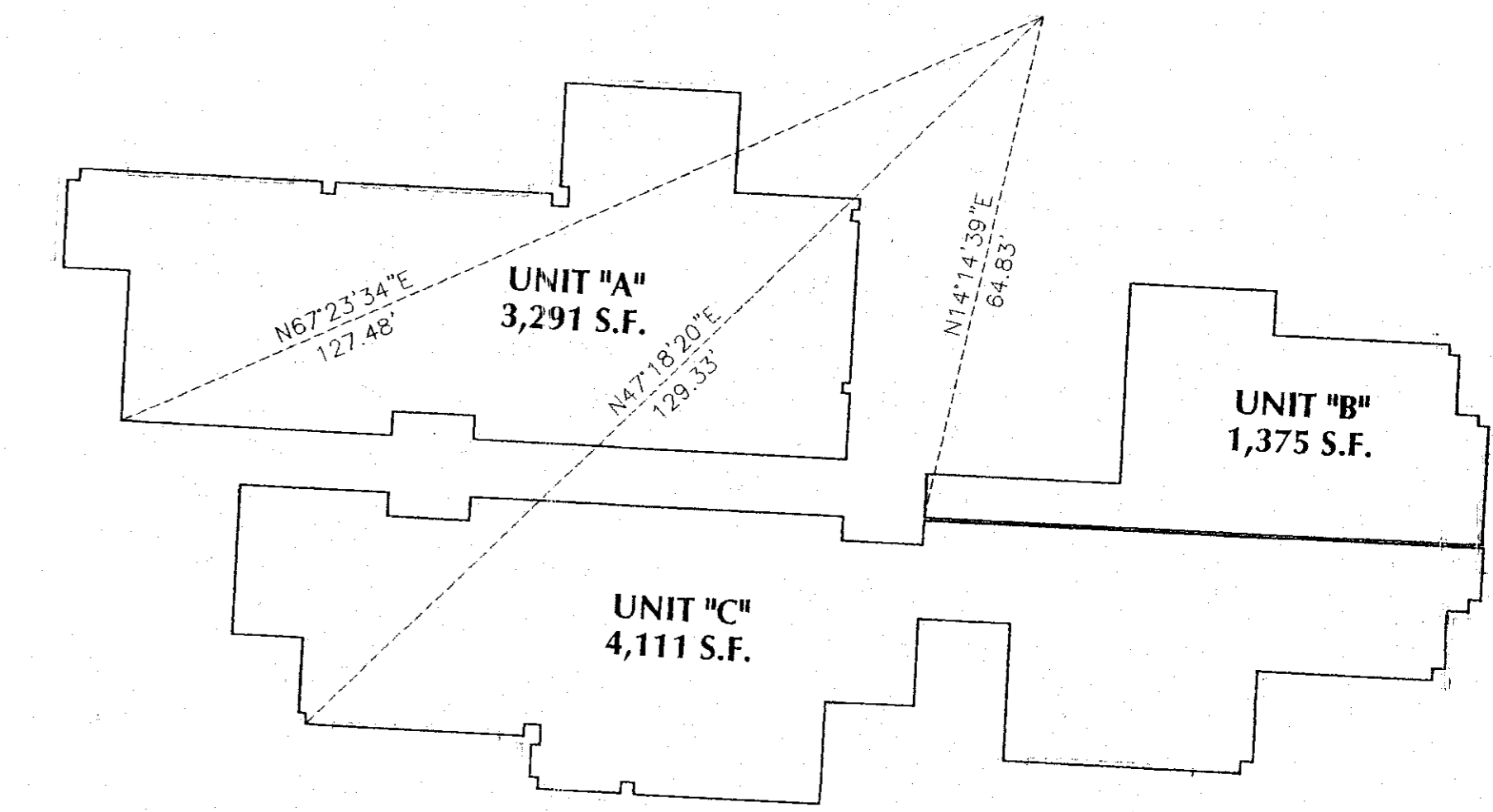
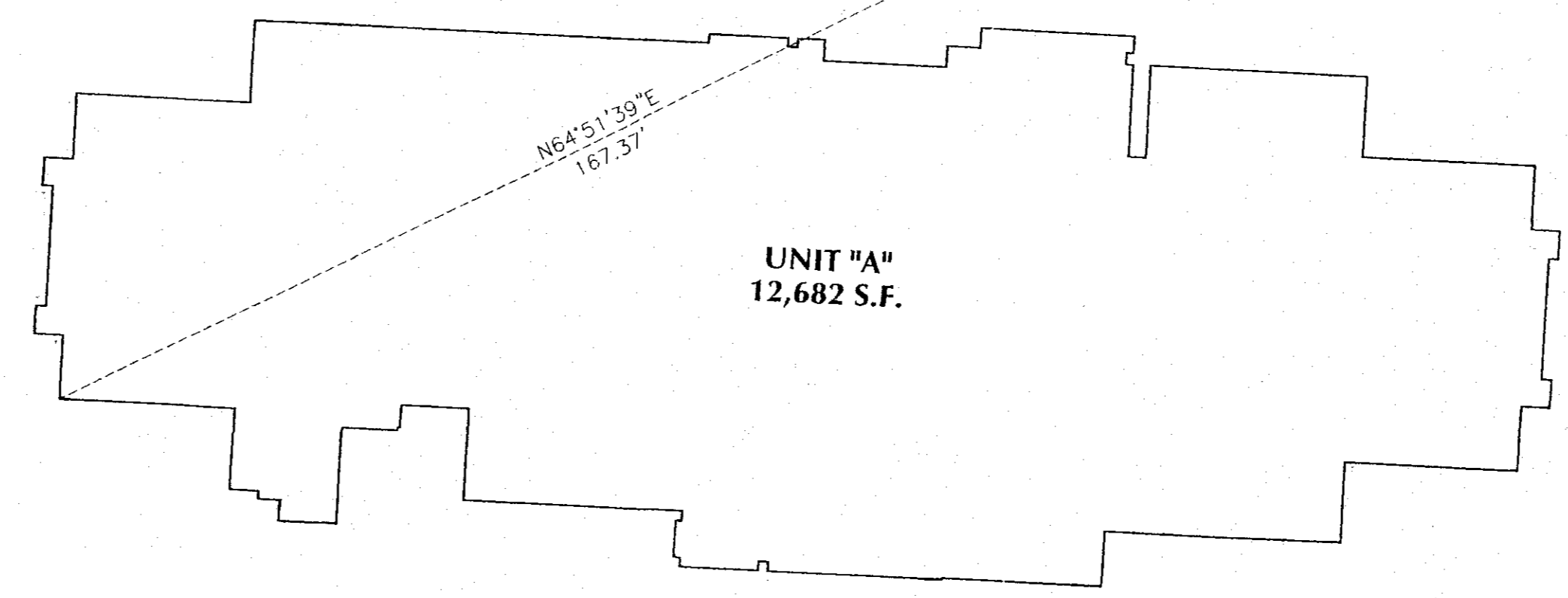
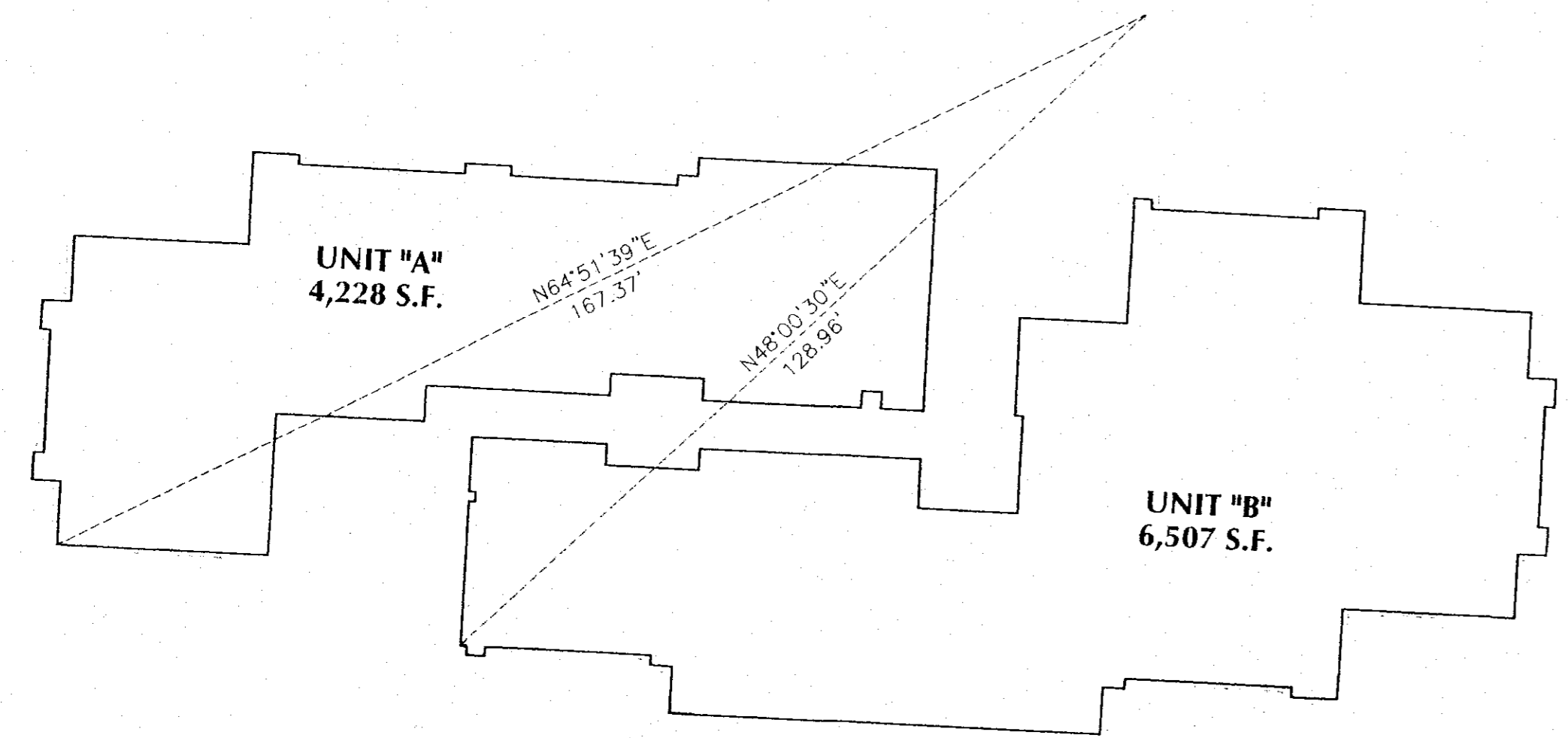
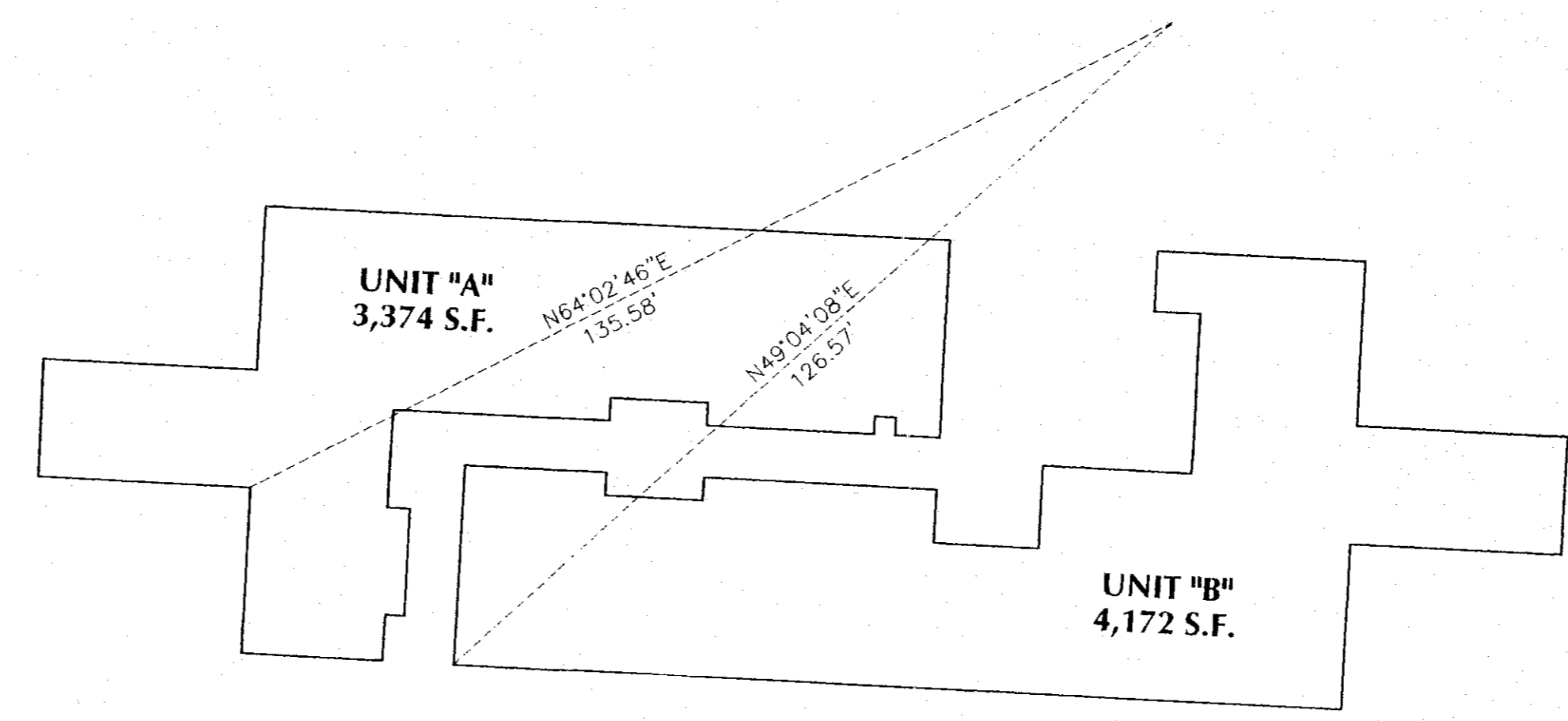
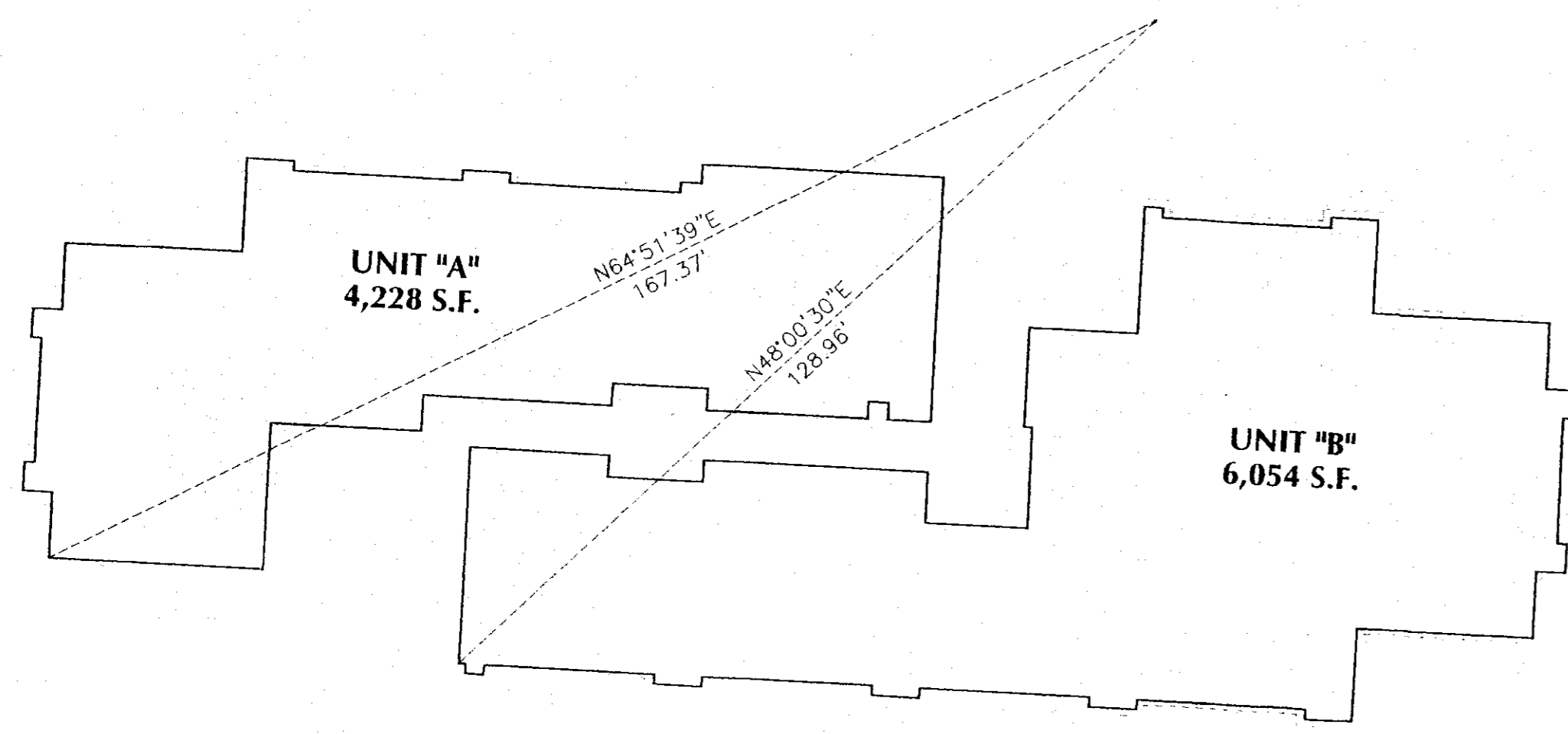


CONDOMINIUM MAP - BUILDING "F"

A PARCEL LOCATED IN THE NE1/4 OF THE NW1/4 OF SECTION 3,
T. 18 N., R.105 W., OF THE SIXTH PRINCIPAL MERIDIAN,
SWEETWATER COUNTY, WYOMING



RECORDED 6/07/2009 AT 04:50 PM RCR 155477 DKS 0200 P04 0208
STEVEN DALE DAVIS, CLERK OF SWEETWATER COUNTY, WY Page 3 of 8

CHOICE ENGINEERING SERVICES

404 "N" Street - Suite 201 | Rock Springs, WY 82901
Phone 307-362-6065 | Fax 307-362-6064

DATE OF PREPARATION: 07/31/09