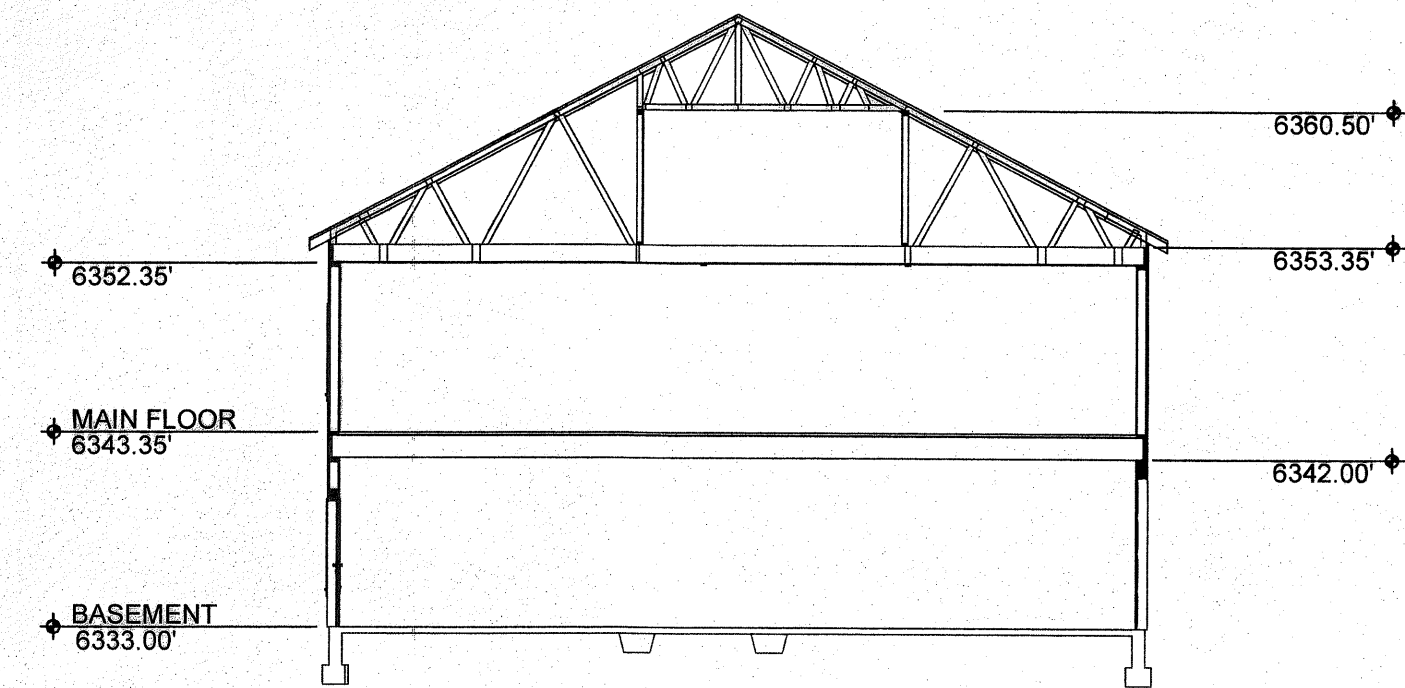
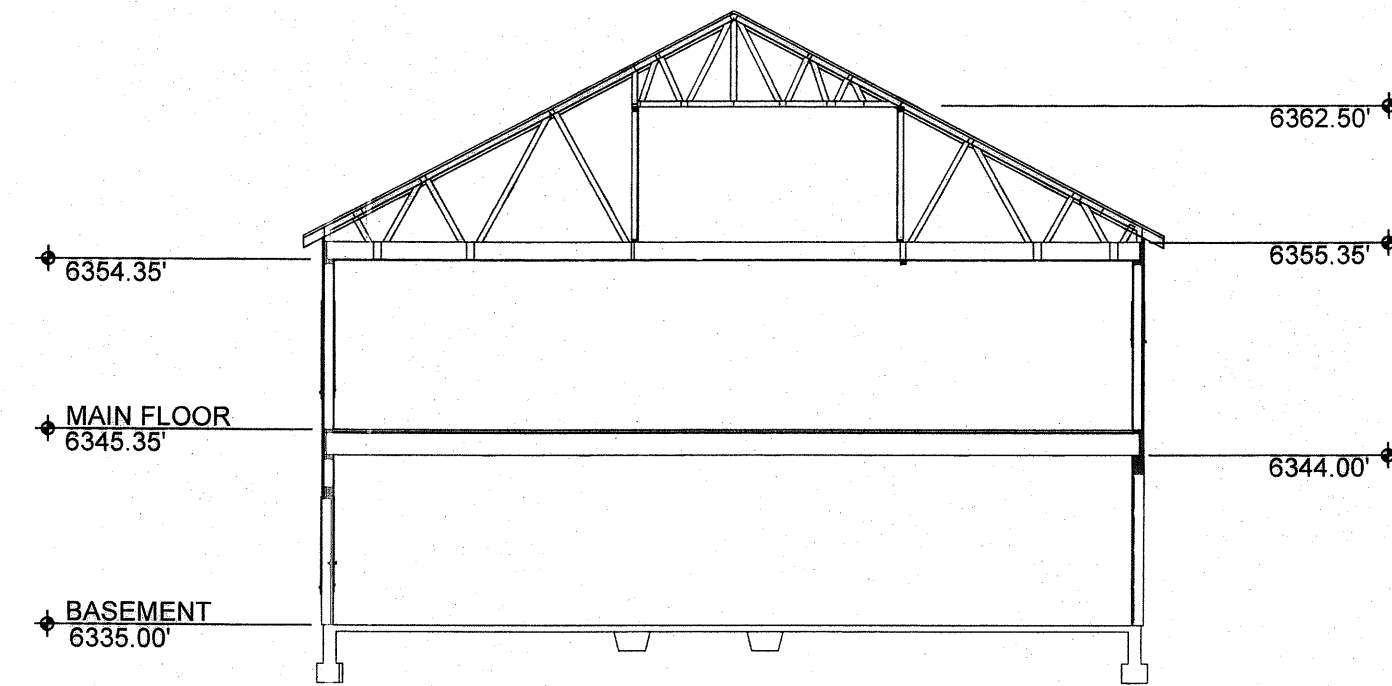


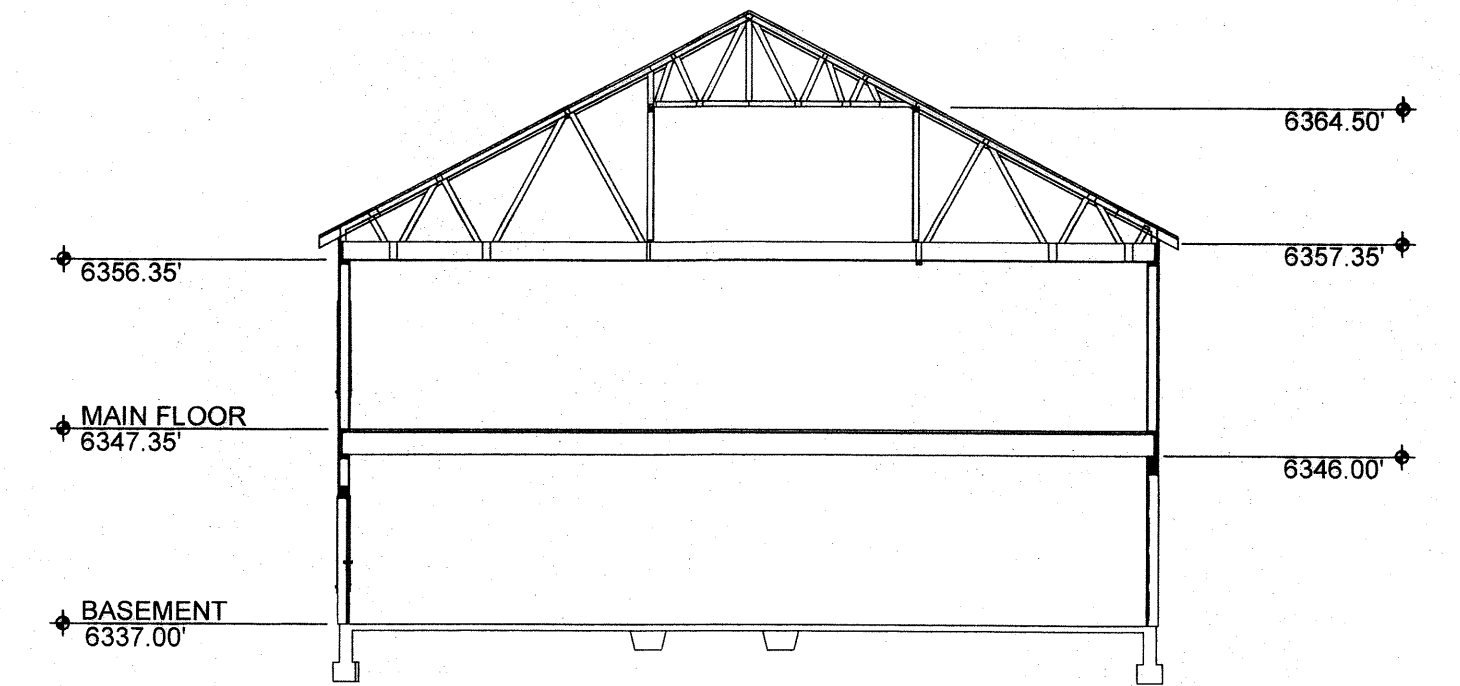
**FINAL PLAT of the
THE RIDGE PHASE I CONDOMINIUMS
LOCATED in PART of the NE 1/4 of SECTION 34, T18N, R107W
CITY of GREEN RIVER
SWEETWATER COUNTY, WYOMING**



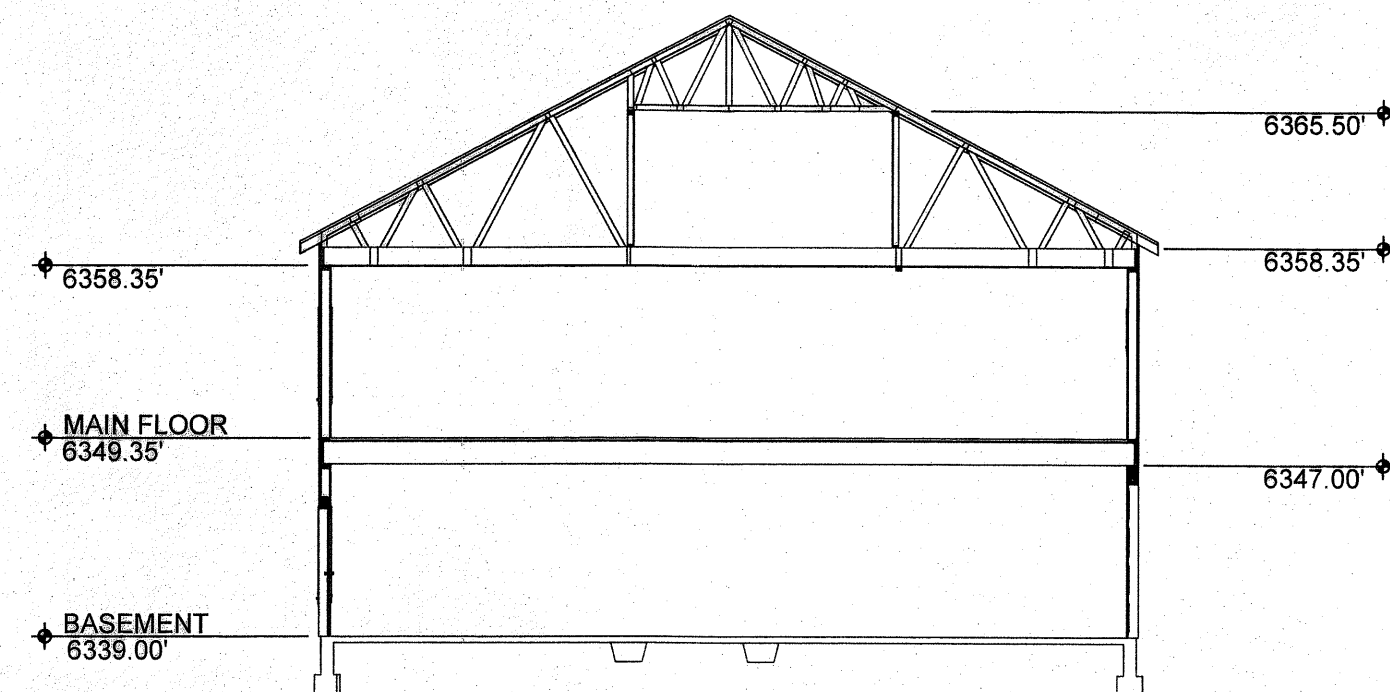
BUILDING 9 UNIT A
NOT TO SCALE



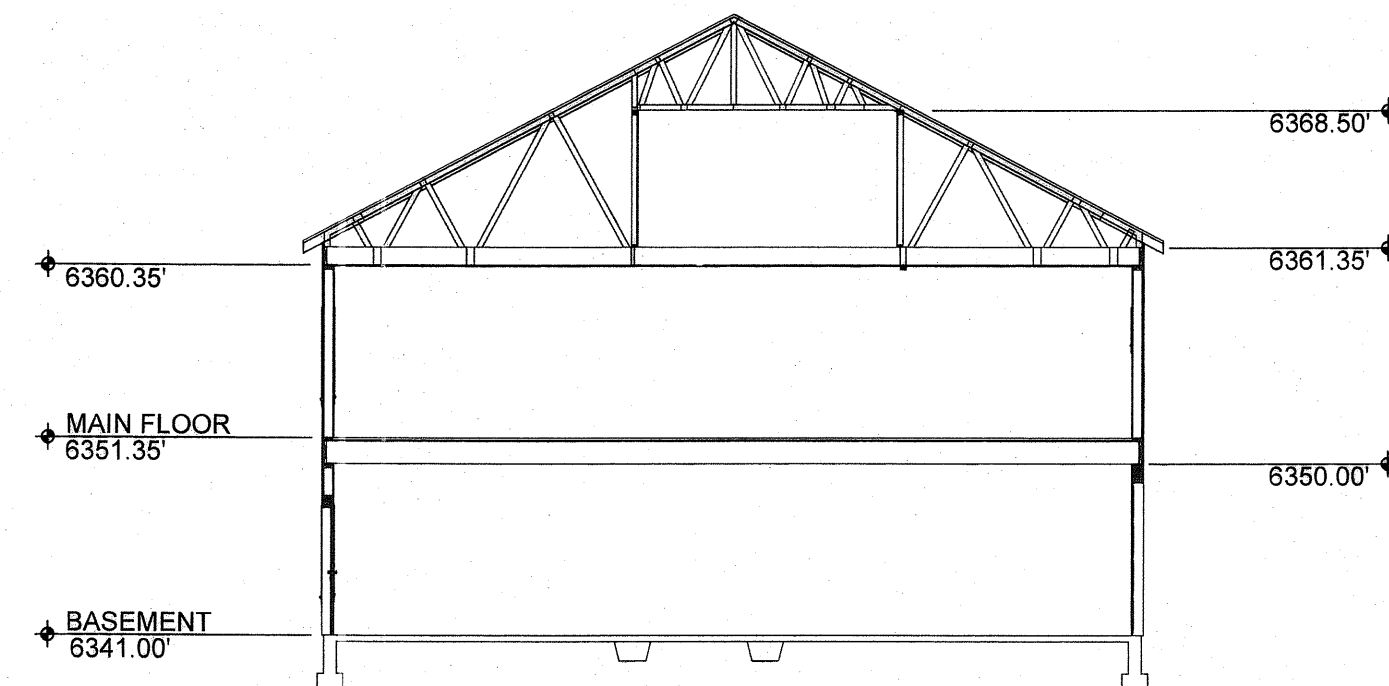
BUILDING 9 UNIT B
NOT TO SCALE



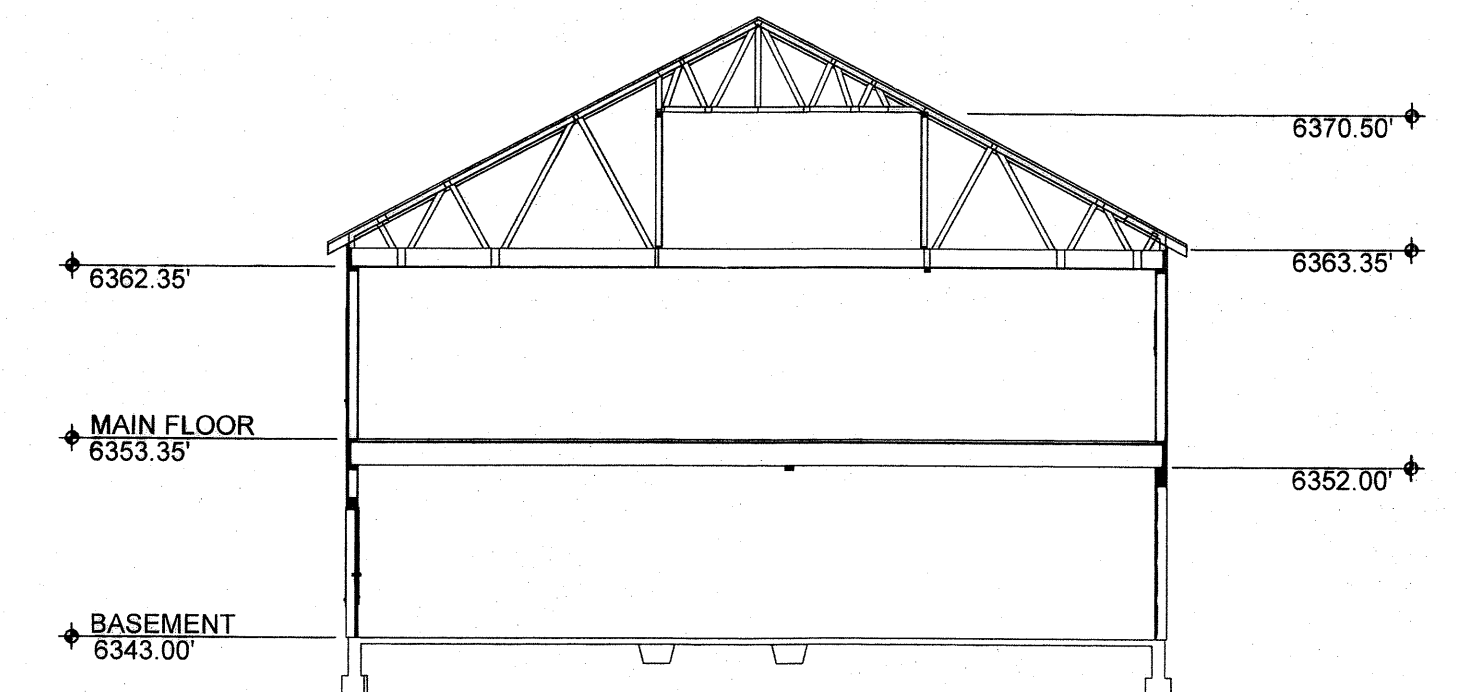
BUILDING 10 UNIT A
NOT TO SCALE



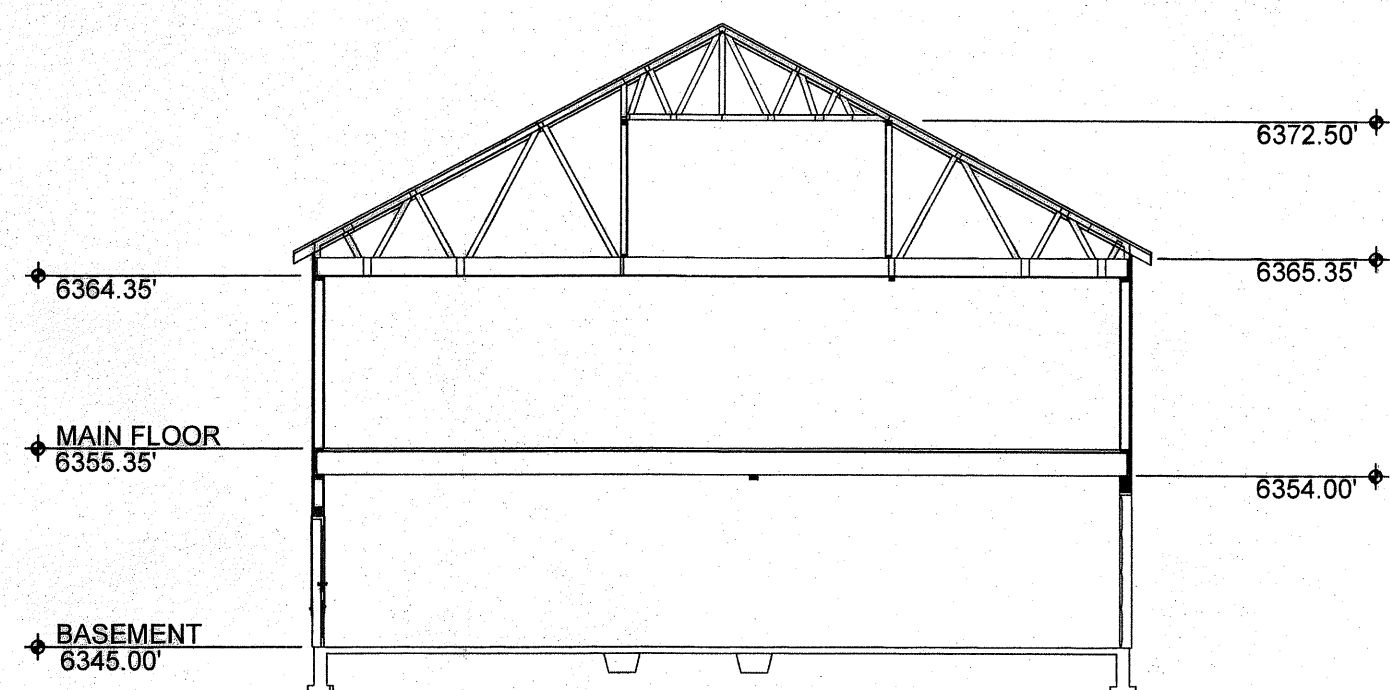
BUILDING 10 UNIT B
NOT TO SCALE



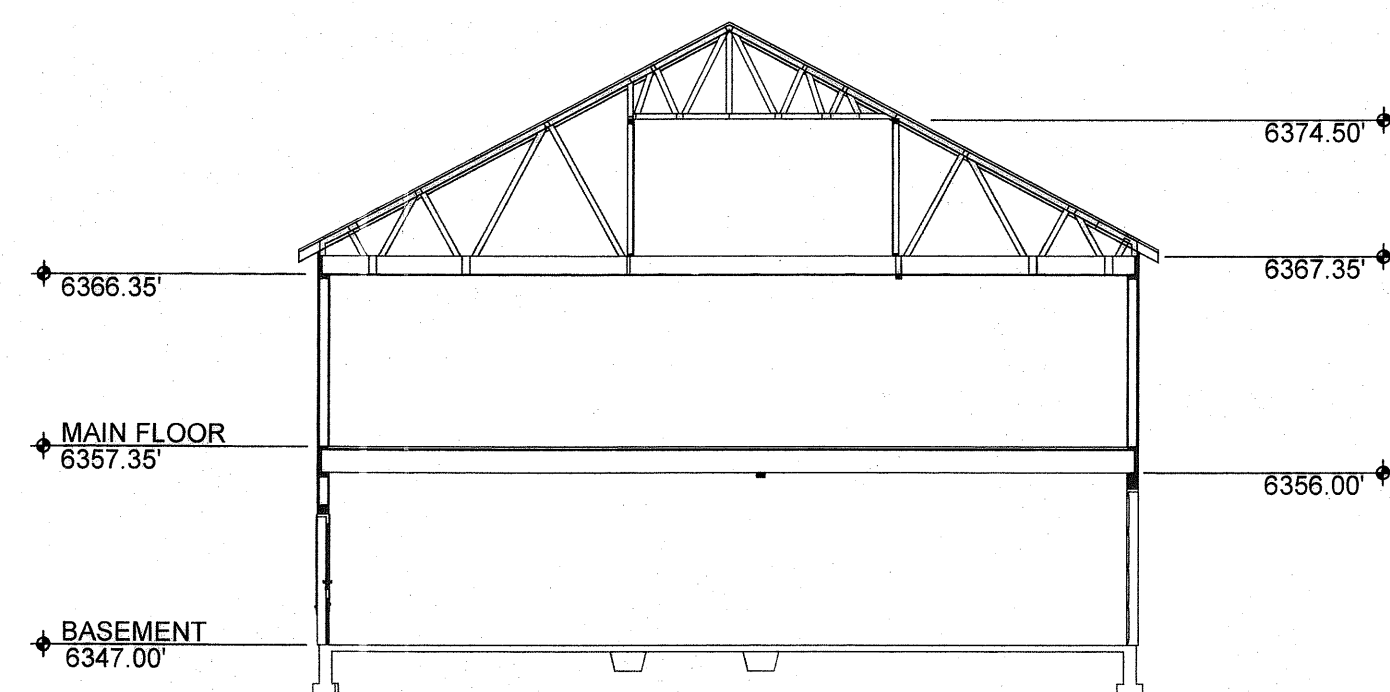
BUILDING 11 UNIT A
NOT TO SCALE



BUILDING 11 UNIT B
NOT TO SCALE



BUILDING 12 UNIT A
NOT TO SCALE



BUILDING 12 UNIT B
NOT TO SCALE

RECORDED 9/27/2007 AT 04:15 PM RECA 1514372 BCK 0000 FOR 0000
STEVEN DALE DAVIS, CLERK OF SWEETWATER COUNTY, WY Page 3 of 5

