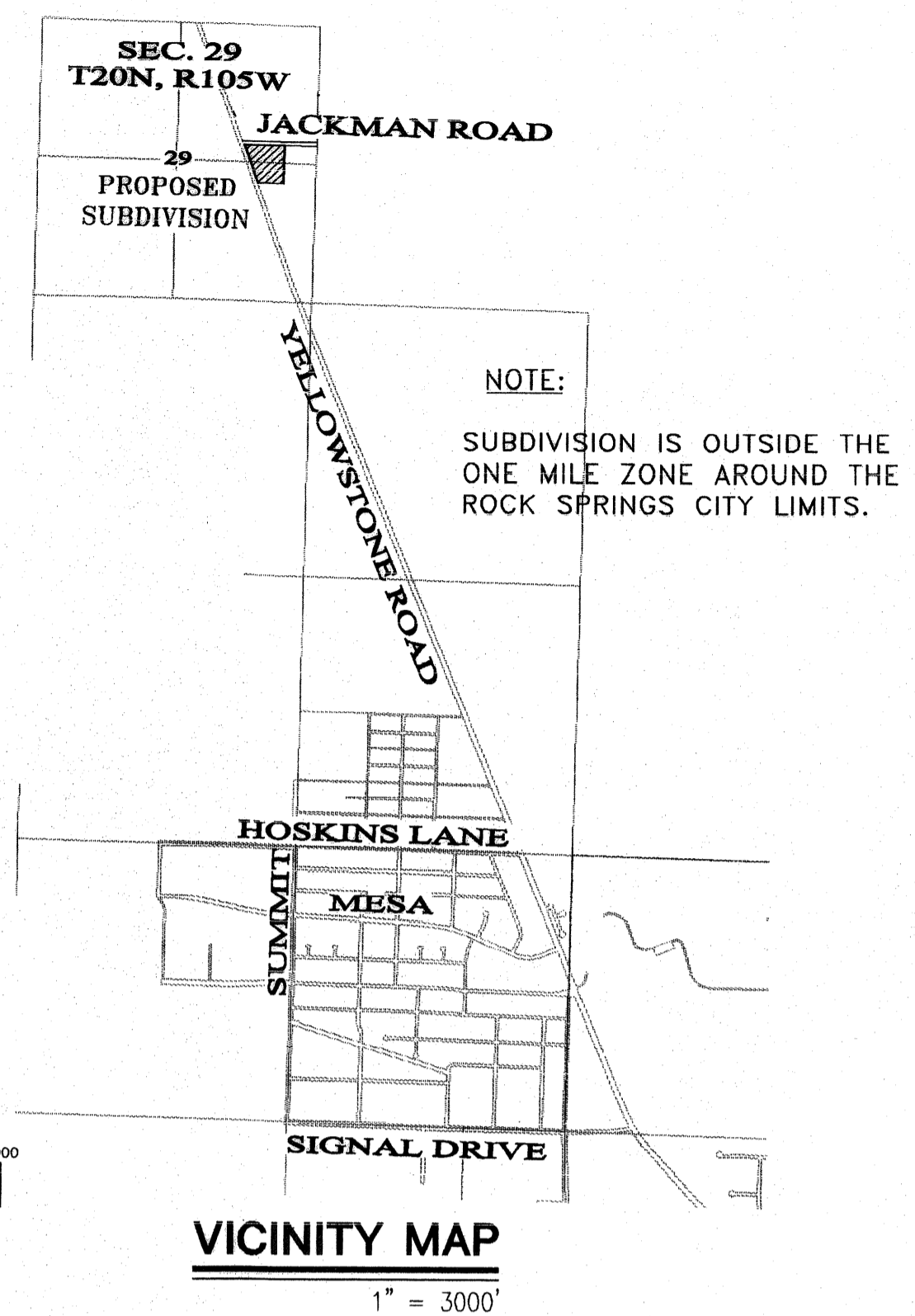


GOLDEN MEADOWS SUBDIVISION

GOLDEN MEADOWS SUBDIVISION
SECTION 29, TOWNSHIP 20 NORTH, RANGE 105 WEST, 6 P.M.
SWEETWATER COUNTY, WYOMING

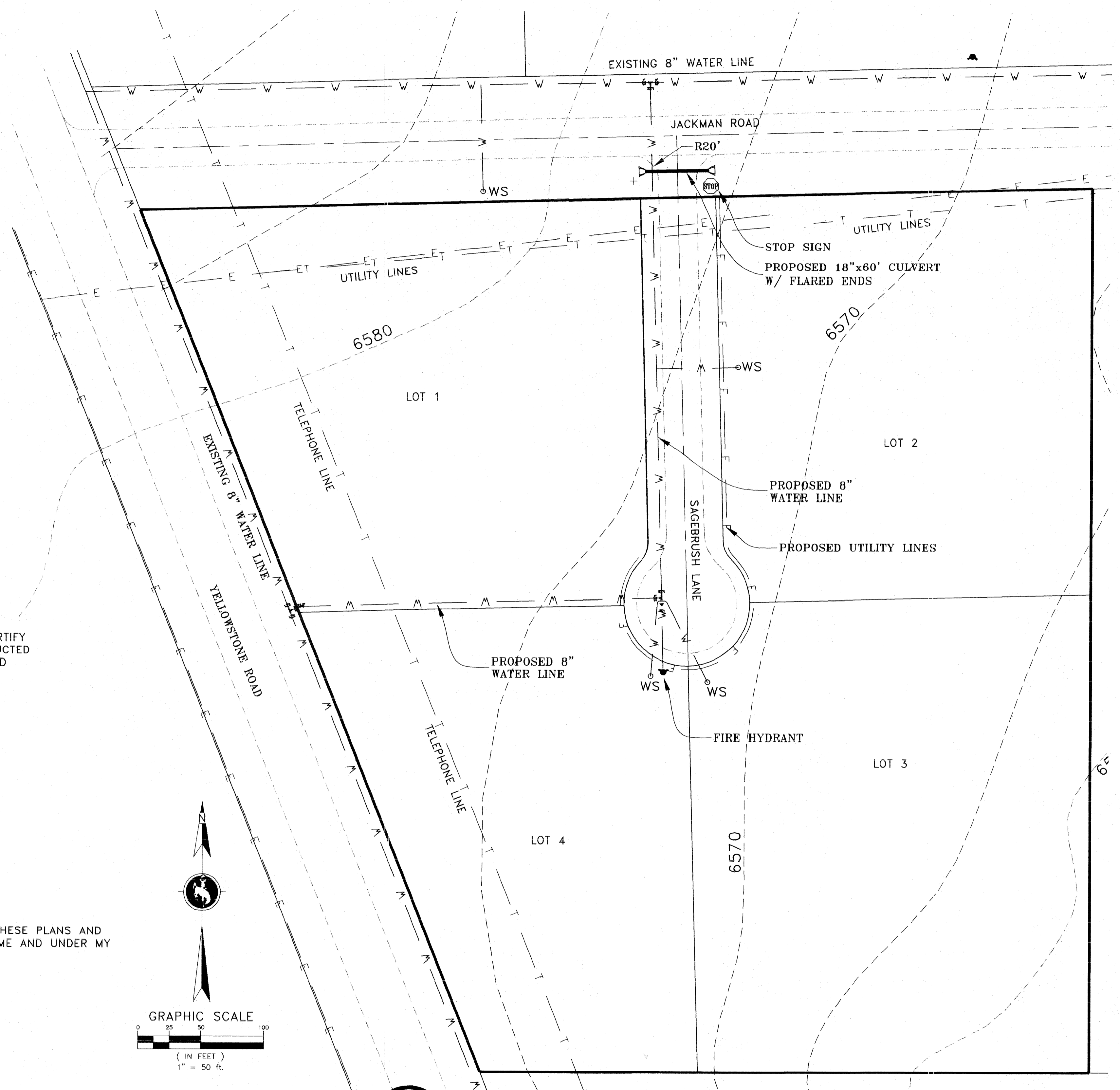


- SHEET INDEX**
- C-0 COVER/INDEX
FINAL PLAT
 - C-1 OVERALL SUBDIVISION LAYOUT PLAN
UTILITY & DRAINAGE
 - C-2 CONSTRUCTION PLANS
 - C-3 STANDARD WATER DETAILS & SECTIONS

- GENERAL NOTES**
- SUBDIVISION ROADS, WATER SYSTEM, AND DRAINAGE STRUCTURES SHALL BE CONSTRUCTED IN ACCORDANCE WITH THE 2001 WYOMING PUBLIC WORKS SPECIFICATIONS. APPLICABLE PUBLIC WORKS SPECIFICATIONS ARE AS FOLLOWS:
 - 02110 CLEARING AND GRUBBING
 - 02210 EXCAVATION AND EMBANKMENT
 - 02220 TRENCH EXCAVATION
 - 02225 TRENCH BACK FILL
 - 02231 AGGREGATE SUB-BASE AND BASE COURSES
 - 02273 RIP-RAP
 - 02645 FIRE HYDRANTS
 - 02665 WATER DISTRIBUTION AND TRANSMISSION SYSTEMS
 - 02670 HYDROSTATIC TESTING
 - 02675 DISINFECTION
 - ROADS SHALL BE CONSTRUCTED IN ACCORDANCE WITH THE PUBLIC WORKS SPECIFICATIONS AND THE WYOMING DEPARTMENT OF TRANSPORTATION STANDARD SPECIFICATIONS.
 - WATER SYSTEM SHALL BE CONSTRUCTED IN ACCORDANCE WITH THE PUBLIC WORKS SPECIFICATIONS AND THE TEN MILE WATER AND SEWER DISTRICT STANDARDS.
 - WATER PIPE : PVC AWWA C900, CLASS 150.
 - WATER SERVICES: 3/4" COPPER WATER LINE
 - ALL WATER VALVES AND FIRE HYDRANTS ARE TO BE MULLER BRAND. ALL MATERIALS ARE TO BE VISUALLY INSPECTED BY THE ENGINEER AND TEN MILE WATER AND SEWER DISTRICT PRIOR TO INSTALLATION. ALL FITTINGS ARE TO BE RATES FOR PRESSURE CLASS 150 PSI.
 - COMPACT ALL SUBGRADE, TRENCH BACKFILL, AND CRUSHED BASE TO 95% MAXIMUM DRY DENSITY, STANDARD PROCTOR (ASTM D-698). MOISTURE CONTENT AT TIME OF COMPACTION SHALL BE WITHIN PLUS 2% OR MINUS 4% OF OPTIMUM MOISTURE CONTENT AS DETERMINED BY ASTM D-698.
 - TRAFFIC SIGN INSTALLATION SHALL INCLUDE STREET NAME SIGNS AT ROAD INTERSECTIONS AND STOP SIGN AT INTERSECTION WITH JACKMAN ROAD.
 - BENCHMARK FOR ELEVATION ON ALL PLANS IS THE NW SECTION CORNER OF SECTION 29, ELEVATION 6530.00 FEET.

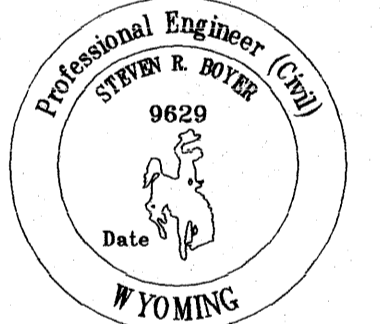
SIGN SUMMARY

Sign	Location	Size
Street Name Signs Jackman Road & Sagebrush Lane & Stop	Station -0+10 - Left Side of Sagebrush Lane	30" by 30"



AS-BUILT CERTIFICATION

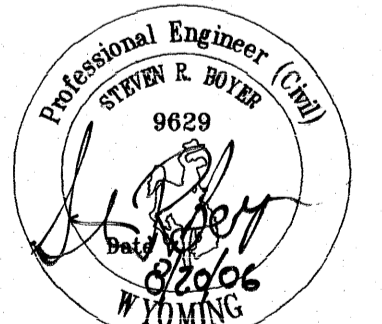
I, STEVEN R. BOYER, DO HEREBY CERTIFY THAT THE SUBDIVISION WAS CONSTRUCTED IN ACCORDANCE WITH THE PLANS AND SPECIFICATIONS.



STEVEN R. BOYER, PE 9629

ENGINEERS CERTIFICATION

I, STEVEN R. BOYER, CERTIFY THAT THESE PLANS AND SPECIFICATIONS WERE PREPARED BY ME AND UNDER MY DIRECT SUPERVISION AND CONTROL.



STEVEN R. BOYER, PE 9629

APPROVED FOR CONSTRUCTION THIS 5th DAY OF SEPTEMBER, 2006, BY THE COUNTY ENGINEER OF SWEETWATER COUNTY, WYOMING.

[Signature]
COUNTY ENGINEER

RECORDED 18/05/2006 AT 01:30 PM REC# 1484563 B# 0000 PG# 0000
LORETTA DILLIFF, CLERK OF SWEETWATER COUNTY, WY Page 2 of 2



CALL BEFORE YOU DIG
WYOMING ONE-CALL
1-800-348-3000

Note:
Utility locates are responsibility of Contractor and is subsidiary to Mobilization bid item.

Boyer's 478 Consulting

PREPARED BY:
STEVEN BOYER, PE
4 COUNTRY HILLS DRIVE
ROCK SPRINGS, WY 82901
(307) 362-9768

DRAWING TITLE:
COVER/TITLE
DRAWN BY:
STEVEN BOYER
DATE:
20 AUG. 2006
SHEET NO:
C-0