

SUMMIT VIEW ESTATES PHASE 1

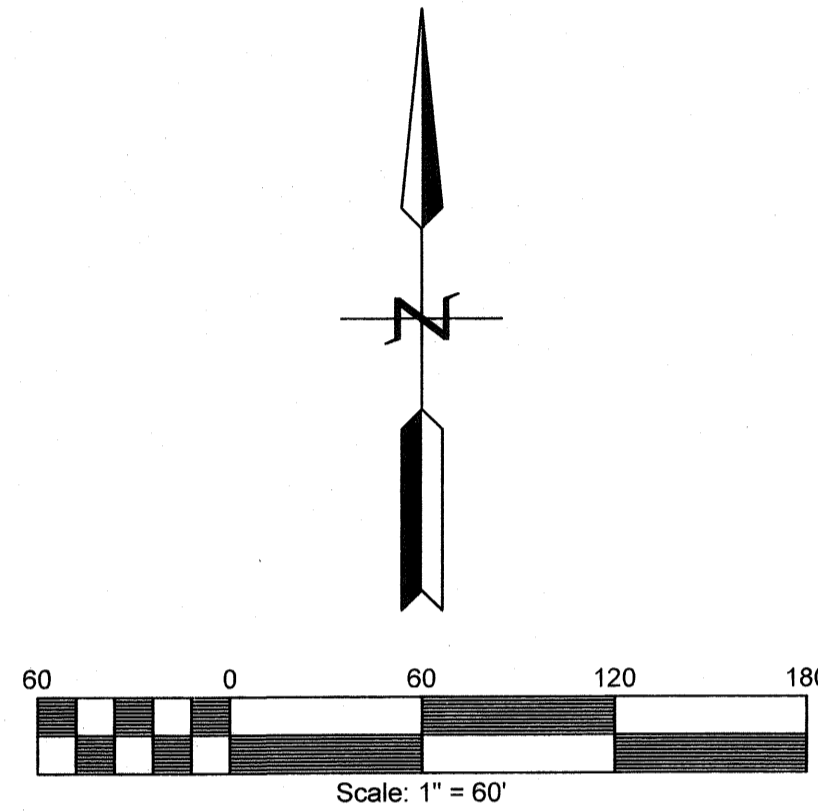
A RE-PLAT OF
BLOCK 9, MOUNTAIN VIEW SUBDIVISION BEING A PORTION OF
THE W 1/2 OF SECTION 33, T. 19 N., R. 105 W., 6TH P.M.,
CITY OF ROCK SPRINGS, SWEETWATER COUNTY, WYOMING.

PHASE I - CURVE TABLE

NUMBER	DELTA ANGLE	CHORD DIRECTION	RADIUS	ARC LENGTH	CHORD LENGTH
C3	90°00'00"	S 80°39'42" E	20.00	31.42	28.28
C4	90°00'00"	N 09°20'18" E	20.00	31.42	28.28
C5	101°32'13"	N 74°53'35" W	20.00	35.44	30.98
C6	21°53'25"	N 13°10'46" W	120.00	45.85	45.57
C7	33°25'38"	N 18°56'53" W	150.00	87.51	86.28
C8	07°36'54"	S 31°51'15" E	180.00	23.92	23.91
C9	07°41'15"	S 24°12'10" E	180.00	24.15	24.13
C13	33°31'37"	N 18°53'54" W	180.00	105.33	103.83
C24	31°37'22"	S 70°08'59" W	150.00	82.79	81.74
C25	31°37'22"	S 70°08'59" W	150.00	82.79	81.74
C26	33°31'50"	S 71°06'13" W	150.00	87.78	86.54

NOTES

- 1.) MAINTENANCE AND UPKEEP OF DRAINAGE EASEMENTS WILL BE THE RESPONSIBILITY OF THE INDIVIDUAL LOT OWNER. FENCES, WALLS OR FOOTINGS THAT WOULD IMPEDE DRAINAGE FLOWS WITHIN THOSE DRAINAGE EASEMENTS AND REGRADING OF DRAINAGE EASEMENTS SHALL NOT BE PERMITTED.
- 2.) SUBJECT PROPERTY DOES NOT FALL WITHIN APPROXIMATE SPECIAL 100 YEAR FLOOD HAZARD AREA AS SHOWN BY F.E.M.A. MAP PANEL No. 560051-0005-E
- 3.) THE 3 STAGE SUMMIT DRAINAGE PROJECT RELIEVES ALL UPSTREAM DRAINAGE FLOW ONTO THE PROPOSED SITE. DETENTION REQUIREMENTS, IF ANY, WILL BE CALCULATED AND ADDRESSED IN THE CONSTRUCTION PLANS.
- 4.) ALL LOT CORNERS MONUMENTED WITH A 2" ALUMINUM CAP ON No.5 X 24 REBAR, STAMPED "PLS 9834" AND APPROPRIATE DATA.
- 5.) THIS SUBDIVISION IS NOT LOCATED OVER KNOWN MINED AREAS.



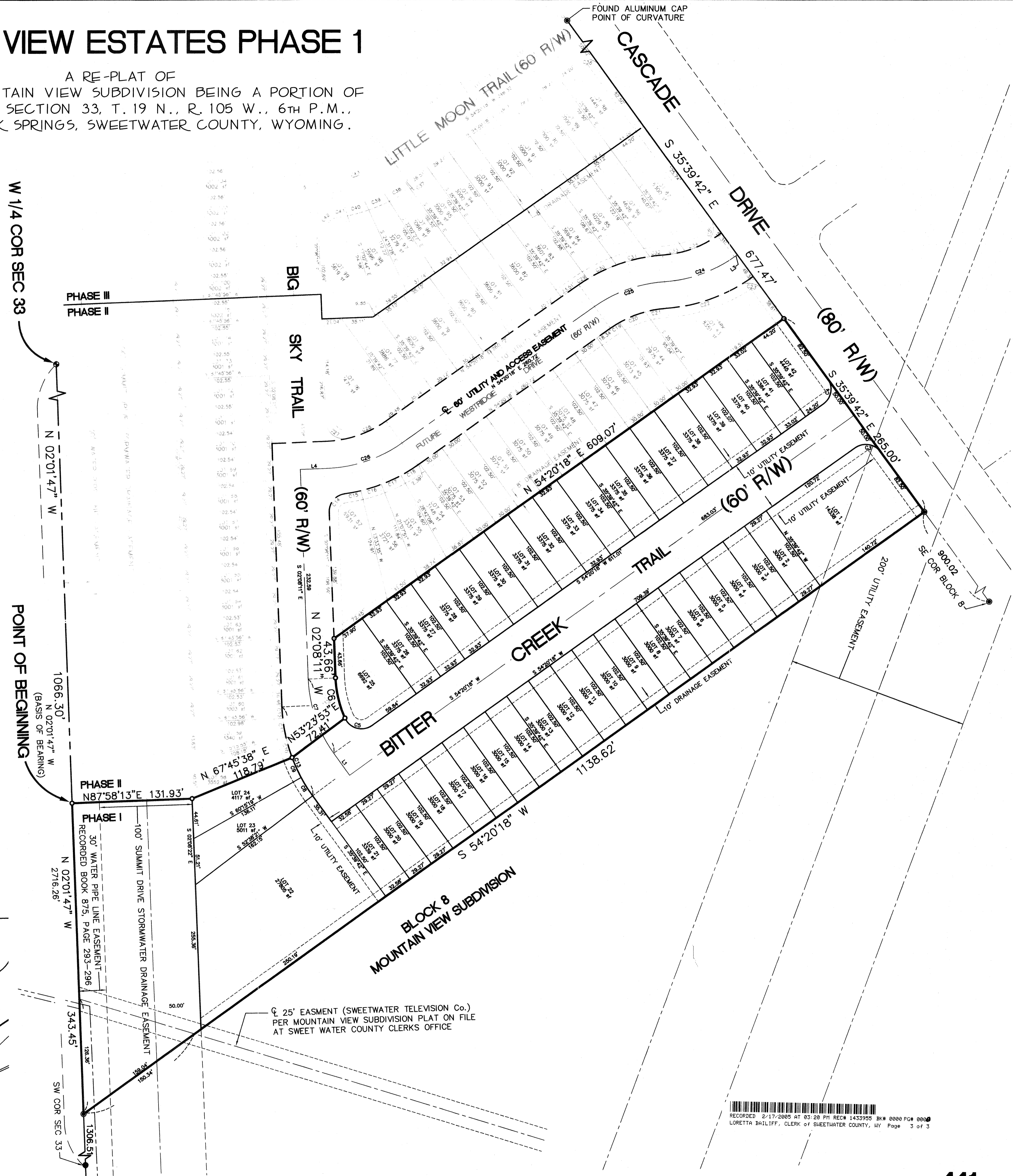
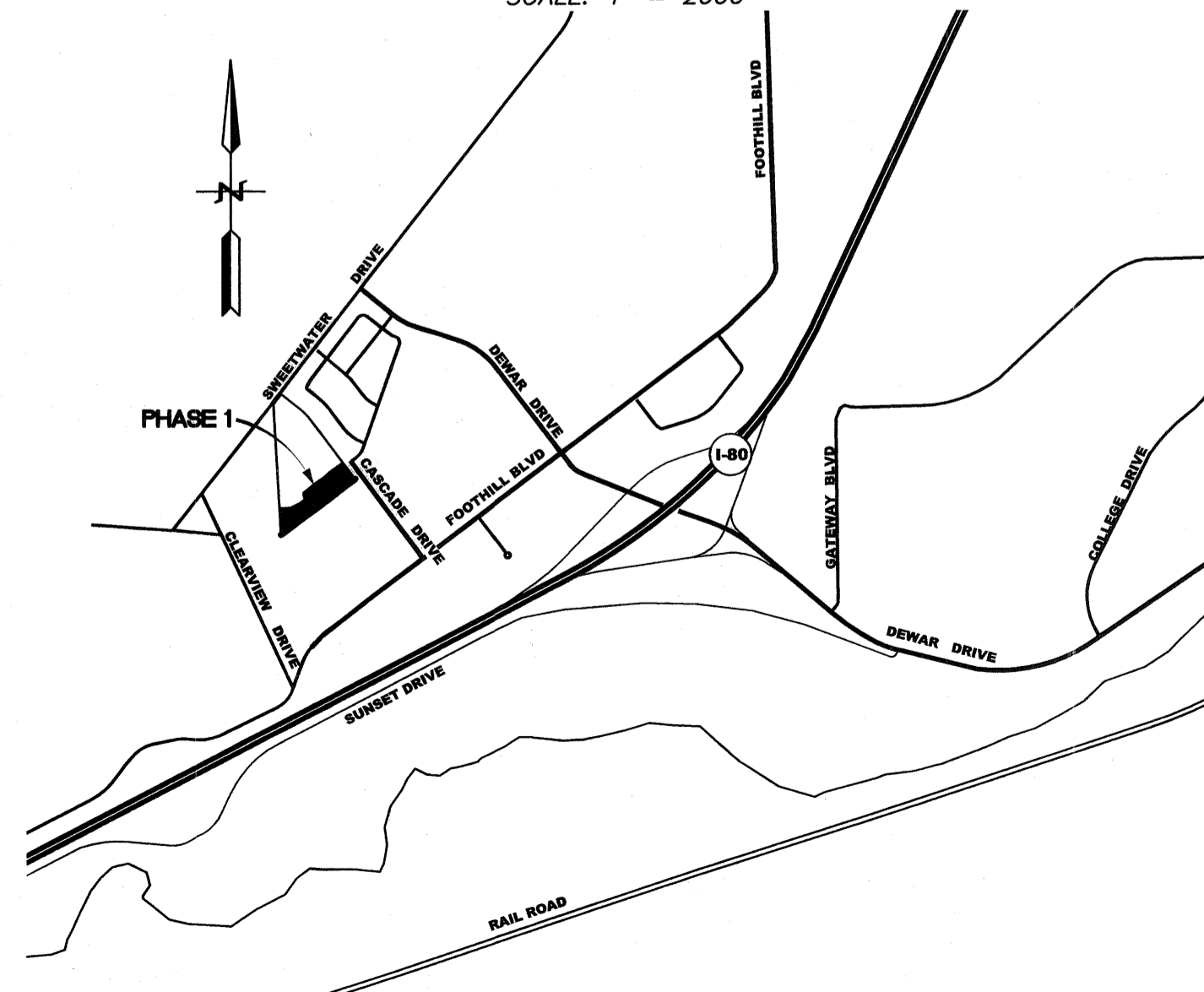
PHASE I - LINE TABLE

NUMBER	DIRECTION	DISTANCE
L1	S 35°39'42" E	30.00'
L3	N 54°20'18" E	3.88'
L4	N 87°51'55" E	29.99'

LEGEND

- SET 2" ALUMINUM CAP ON No.5 X 24 REBAR STAMPED "PLS 9834" AND APPROPRIATE DATA
- FOUND ALUMINUM CAP STAMPED "LS 602"
- FOUND 3/4" ALUMINUM CAP STAMPED "JOHNSON - FERRELIA Co, INC."
- FOUND 3/4" BRASS CAP STAMPED "U.S. GENERAL LAND OFFICE"

VICINITY MAP
SCALE: 1" = 2000'



IGC MANAGEMENT Inc.
212 W 5th St.
Cheyenne, Wyoming
82001

Office: (307) 635.5773
Fax: (307) 635.7227

Sheet 3 of 3 - PHASE I
Sheet 3 of 7

Prepared Jan 28, 2005

RECORDED 2-17-2005 AT 03:20 PM REC# 143395 BK# 0000 PG# 0000
LORETTA BAILIFF, CLERK OF SWEETWATER COUNTY, WY Page 3 of 3