

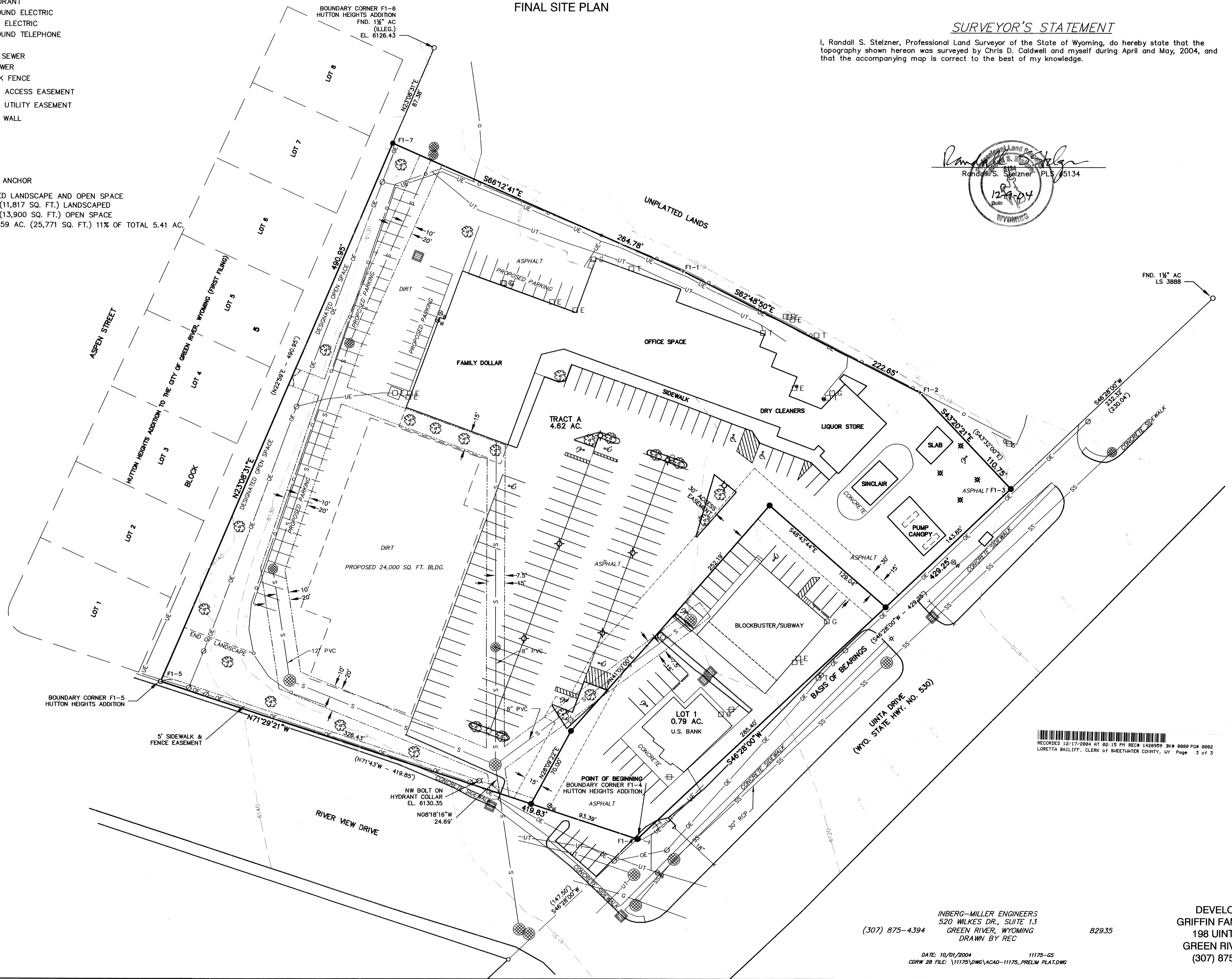
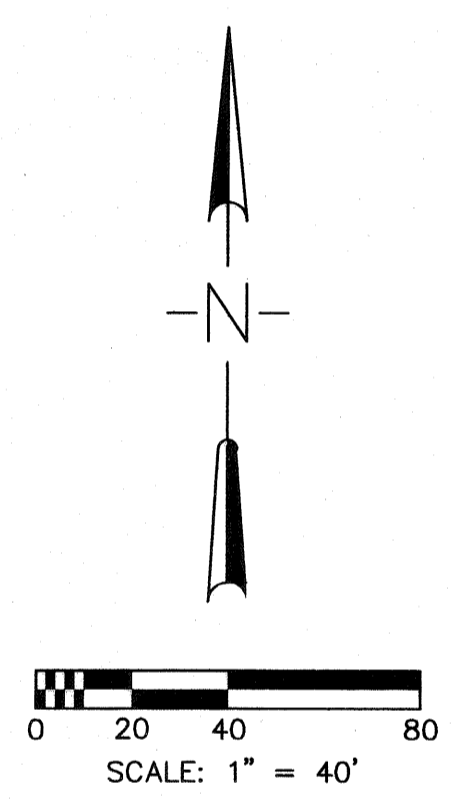
SITE DEVELOPMENT PLAN
HUTTON HEIGHTS SHOPPING CENTER P.U.D.
(FIRST FILING)
AND BEING LOCATED IN
SE 1/4 SECTION 22, T.18N., R.107W., 6th P.M.
CITY OF GREEN RIVER, SWEETWATER COUNTY, WYOMING
FINAL SITE PLAN

SURVEYOR'S STATEMENT

I, Randall S. Stelzner, Professional Land Surveyor of the State of Wyoming, do hereby state that the topography shown hereon was surveyed by Chris D. Caldwell and myself during April and May, 2004, and that the accompanying map is correct to the best of my knowledge.



- LEGEND**
- SET 3/8" X 24" REBAR W/ ALUMINUM CAP INSCRIBED IME LS 5134
 - FND. ALUMINUM CAP, AS NOTED
 - ⊙ BRASS CAP
 - ▣ CONCRETE MONUMENT
 - FOUND REBAR
 - + CHISELED MARK IN CONCRETE
 - () RECORD DATA
 - ⊙ SPOT ELEVATION
 - ⊙ UTILITY POLE
 - ⊙ LIGHT
 - ⊙ GAS VALVE
 - ⊙ WATER VALVE
 - Y CULVERT
 - * WELL
 - G GAS METER
 - T TELEPHONE BOX
 - E ELECTRICAL BOX/TRANSFORMER
 - CLEAN-OUT
 - ⊕ SIGN
 - ⊙ FIRE HYDRANT
 - UE UNDERGROUND ELECTRIC
 - OE OVERHEAD ELECTRIC
 - UT UNDERGROUND TELEPHONE
 - G GAS
 - S SANITARY SEWER
 - SS STORM SEWER
 - CHAIN LINK FENCE
 - PROPOSED ACCESS EASEMENT
 - PROPOSED UTILITY EASEMENT
 - RETAINING WALL
 - ▣ GRATE
 - ⊙ MANHOLE
 - MAILBOX
 - GUY WIRE ANCHOR
 - ⊙ DESIGNATED LANDSCAPE AND OPEN SPACE
 - 0.27 AC. (11,817 SQ. FT.) LANDSCAPED
 - 0.32 AC. (13,900 SQ. FT.) OPEN SPACE
 - TOTAL 0.59 AC. (25,771 SQ. FT.) 11% OF TOTAL 5.41 AC.



RECORDED 12-17-2004 AT 02:15 PM REC# 1428959 BKN 0000 PGM 0002
 LORETTA BULLIFF, CLERK OF SHEETWATER COUNTY, WY Page 3 of 3

INBERG-MILLER ENGINEERS
 520 WILKES DR., SUITE 13
 (307) 875-4394 GREEN RIVER, WYOMING
 DRAWN BY REC
 829.35
 DATE: 10/01/2004 11175-GS
 CORW 28 FILE: \11175\DWG\ACAD-11175_PRELIM PLAT.DWG

DEVELOPER:
 GRIFFIN FAMILY, LLC
 198 UINTA DR.
 GREEN RIVER, WY
 (307) 875-1400