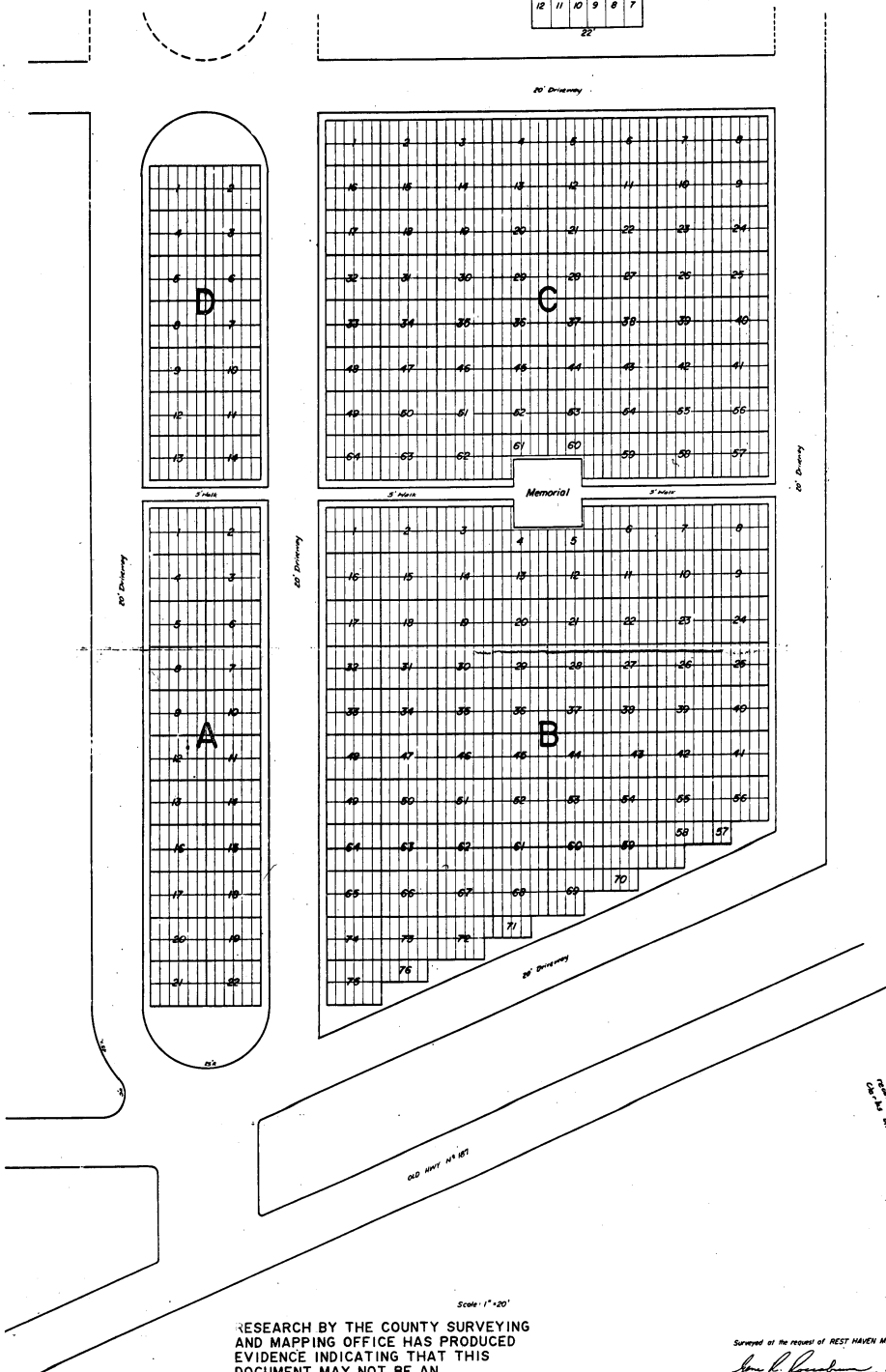
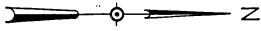
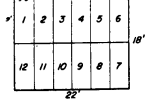


REST HAVEN MEMORIAL GARDENS

SWEETWATER COUNTY, WYOMING

Lots 1 to 22 inclusive of Block A
 Lots 1 to 76 inclusive of Block B
 Lots 1 to 64 inclusive of Block C
 Lots 1 to 14 inclusive of Block D

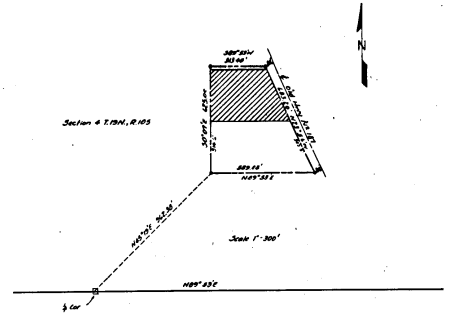
Typical Lot Showing Dimensions and System of Numbering



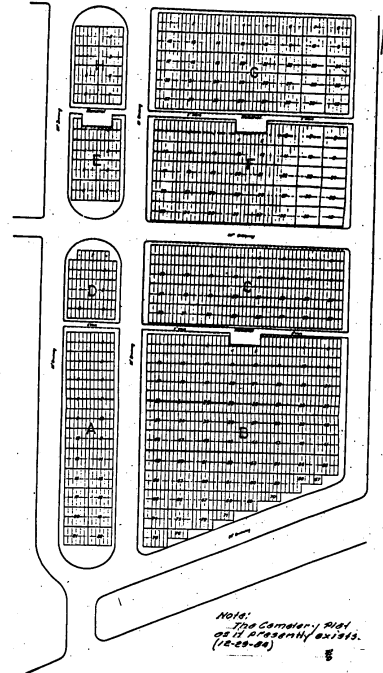
Scale 1"=20'

RESEARCH BY THE COUNTY SURVEYING AND MAPPING OFFICE HAS PRODUCED EVIDENCE INDICATING THAT THIS DOCUMENT MAY NOT BE AN OFFICIAL SUBDIVISION PLAT.
 KEF 1/28/99

Surveyed at the request of REST HAVEN MEMORIAL GARDENS
John B. Anderson Date Sept. 8, 1962
 Engineer
 Professional Engineer & Land Surveyor License No. 810



A Parcel of Land lying in the NE 1/4 SW 1/4 SE 1/4 of Section 4, T.19N., R.10E. of the Sixth Principal Meridian Sweetwater County Wyoming Described in Metes and Bounds as follows:
 Beginning at 661 N 65°10' E, 362.38 feet from the 1/4 corner of T.19N., R.10E.
 Thence N89°55' E a distance of 583.78 feet
 Thence S23°26' W a distance of 683.20 feet
 REST HAVEN MEMORIAL GARDENS
 12-13-1983



Note: The Corralley Road as it presently exists (10-28-88)