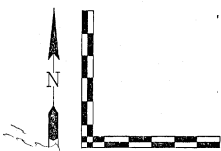


Final Plat

of

Tract C, Amended Hickok Addition, a subdivision to the City of Green River, Wyoming.

A Subdivision located in the N 1/2, of the SE 1/4, of Section 35, Township 18 North, Range 107 West of the 6th P.M., Sweetwater County, Wyoming.



1"=100'



"TYPICAL" LOT CORNER
TYPICAL 1/2" DIAMETER ALUMINUM CAP ATTACHED TO A 5/8" DIA REINFORCEMENT ROD.



"TYPICAL" BOUNDARY MONUMENT
TYPICAL 1/2" BRASS CAP ATTACHED TO A 2 1/4" DIAMETER BY 30" LONG IRON PIPE.

LEGEND:
C = SEE 1/2" ALUMINUM CAP
B = SEE 1/2" BRASS CAP

NOTES:
1. Mark this property in and of its Final Plat Area.
2. Show Change from R-1 to R-11.
3. 7.5' Utility Easement on the West Side of Lot 22 where shown.
4. Show all remaining Tract "C" and all existing City streets.

TOTAL NUMBER OF ACRES = 10.3 ACRES MORE OR LESS
TOTAL NUMBER OF OPEN SPACES = 0.6 ACRES
TOTAL NUMBER OF LOTS = 31 LOTS
TOTAL NUMBER OF BLOCKS = 1 BLOCK

SURVEYOR'S CERTIFICATE

STATE OF WYOMING }
SWEETWATER COUNTY }
I, John L. Smith, do hereby certify that I am a registered land surveyor licensed under the laws of the State of Wyoming and that this plat is a true, correct and complete and is a true and correct subdivision, as the plat, plan, dedication, and when shown and that such plat was made from an accurate survey of said property by myself and my assistants and that I am a duly sworn and qualified surveyor and that I am duly sworn and qualified as a surveyor of the land, blocks, streets and easements of said subdivision as the same are shown upon the ground in accordance with the City of Green River regulations governing the subdivision of land.



Certificate of notice of the Public Works Director
Noted on this plat returned on this day of August, 1997, by the Public Works Director of the City of Green River, Wyoming.

City Public Works Director

Certificate of approval by the City of Green River Planning and Zoning Commission as follows:
On and received by the City of Green River, Wyoming, this 11th day of August, A.D. 1997.

City Clerk

Certificate of acceptance and approval by the City Council of the City of Green River as follows:

Approved by the City Council of the City of Green River, Wyoming, this 11th day of August, A.D. 1997.



Certificate for recording by the County Clerk and Recorder as follows:
This plat was filed for record in the Office of the Clerk and Recorder of Sweetwater County, Wyoming, on this 11th day of August, A.D. 1997, and is recorded in Book 1174636, Page 10.

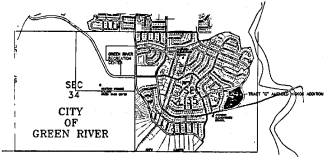
1174636

County Clerk
By: [Signature]

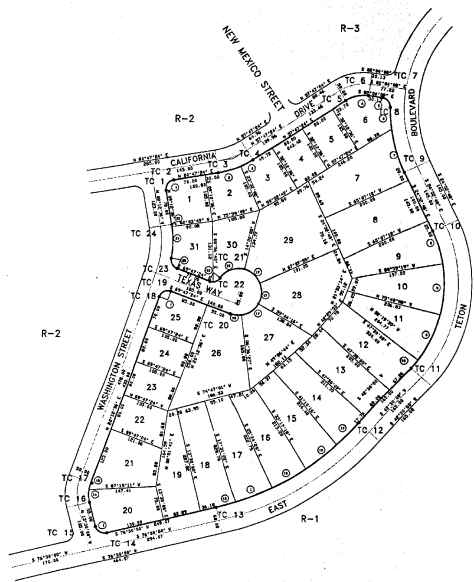


FINAL PLAT OF
Tract "C"
Amended Hickok Addition
H & D Partners
P.O. Box 820
Green River, Wyoming 82935
11/24" scale (SEE D) 117463600 (SHEET 1 OF 1)

CURVE NO.	DELTA	CHORD	ARC LENGTH	CHORD BEARING	CHORD
1	174.174	100.000	100.000	S 89.274° E	100.000
2	174.174	100.000	100.000	S 89.274° E	100.000
3	174.174	100.000	100.000	S 89.274° E	100.000
4	174.174	100.000	100.000	S 89.274° E	100.000
5	174.174	100.000	100.000	S 89.274° E	100.000
6	174.174	100.000	100.000	S 89.274° E	100.000
7	174.174	100.000	100.000	S 89.274° E	100.000
8	174.174	100.000	100.000	S 89.274° E	100.000
9	174.174	100.000	100.000	S 89.274° E	100.000
10	174.174	100.000	100.000	S 89.274° E	100.000
11	174.174	100.000	100.000	S 89.274° E	100.000
12	174.174	100.000	100.000	S 89.274° E	100.000
13	174.174	100.000	100.000	S 89.274° E	100.000
14	174.174	100.000	100.000	S 89.274° E	100.000
15	174.174	100.000	100.000	S 89.274° E	100.000
16	174.174	100.000	100.000	S 89.274° E	100.000
17	174.174	100.000	100.000	S 89.274° E	100.000
18	174.174	100.000	100.000	S 89.274° E	100.000
19	174.174	100.000	100.000	S 89.274° E	100.000
20	174.174	100.000	100.000	S 89.274° E	100.000
21	174.174	100.000	100.000	S 89.274° E	100.000
22	174.174	100.000	100.000	S 89.274° E	100.000



VICINITY MAP
Scale 1"=2000'



DEDICATION
Known all men by these presents that the undersigned, H & D Partners, being the owner, proprietor, or person in lawful title to the land herein described, do hereby dedicate:
That the foregoing plat dedicated on this 11th day of August, 1997, is a subdivision which is located in the N 1/2 of the SE 1/4 of Section 35, Township 18 North, Range 107 West of the 6th P.M., Sweetwater County, Wyoming, and is more particularly described by meter and known as follows:
That the undivided property of the land shown and described on this plat does (and hereby dedicates to the City for potential public use all streets, streets easements and other blocks within the boundary lines of the plat as indicated and not already otherwise dedicated for public use.
Books of Record in the County Clerk's Office in the Book No. of Section 25, Township 18 North, Range 107 West of the 6th P.M., Sweetwater County, Wyoming, containing the plat hereon shown, as recorded on the 11th day of August, 1997, by the undersigned herein.
All rights under and by virtue of the homestead exemption laws of the State of Wyoming, are hereby waived and released.
Executed this 11th day of August, A.D. 1997, by:
H & D Partners
P.O. Box 820
Green River, Wyoming 82935
(307) 875-1222
(307) 875-1242 fax
John L. Smith
William H. Smith and Associates P.C.
Surveying Consultants