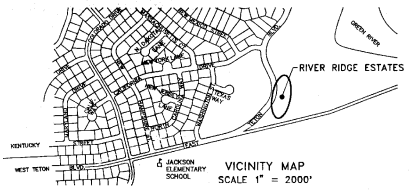
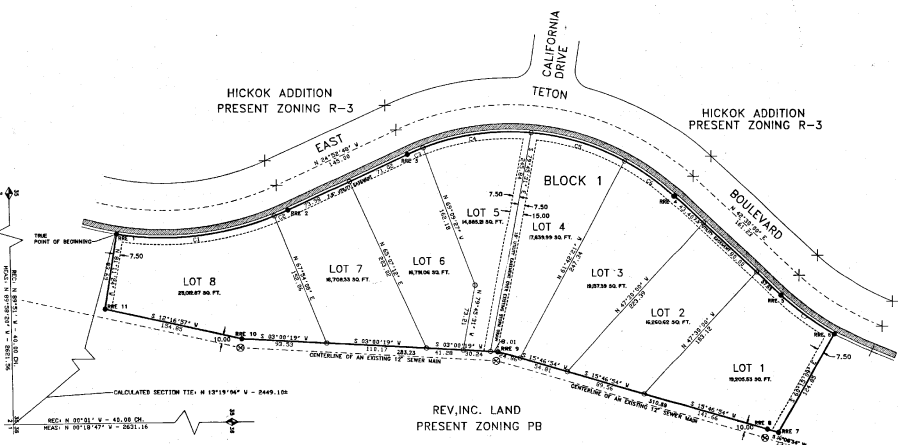
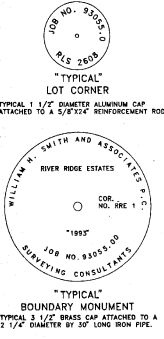


FINAL PLAT
OF
"RIVER RIDGE ESTATES"

A SUBDIVISION WITHIN THE CORPORATE CITY LIMITS OF GREEN RIVER, WYOMING.
(LOCATED IN THE E 1/2 OF SECTION 35, T 18 N, R 107 W, OF THE 6TH PM. SWEETWATER COUNTY, WYOMING.)



LEGEND:
 ○ = SEE 1 1/2" ALUMINUM CAP
 ● = SEE 3/4" BRASS CAP
 ⊕ = EXISTING MANHOLE
 ⊙ = EXISTING MONUMENT

NOTES:
 1. THIS PLAT, TOGETHER WITH THE SURVEY, SHALL BE FILED IN THE PUBLIC RECORDS OF THE COUNTY OF SWEETWATER, WYOMING, AND SHALL BE A PART OF THE PUBLIC RECORDS OF SAID COUNTY.
 2. THE SURVEYOR'S CERTIFICATE SHALL BE FILED WITH THIS PLAT.
 3. THE SURVEYOR SHALL BE RESPONSIBLE FOR THE ACCURACY OF THE SURVEY AND THE CORRECTNESS OF THE PLAT.
 4. THE SURVEYOR SHALL BE RESPONSIBLE FOR THE CORRECTNESS OF THE PLAT AND THE ACCURACY OF THE SURVEY.
 5. THE SURVEYOR SHALL BE RESPONSIBLE FOR THE CORRECTNESS OF THE PLAT AND THE ACCURACY OF THE SURVEY.

TOTAL NUMBER OF ACRES = 2.888 ACRES MORE OR LESS
TOTAL NUMBER OF LOTS = 8 LOTS
TOTAL NUMBER OF ACRES PER LOT = 0.361 ACRES MORE OR LESS
TOTAL NUMBER OF LOTS IN BLOCK = 8 LOTS
TOTAL NUMBER OF BLOCKS = 1 BLOCK

SURVEYOR'S CERTIFICATE
 STATE OF WYOMING }
 SWEETWATER COUNTY }

I, **William A. Smith**, do hereby certify that I am a registered land surveyor and that the above described plat is a true and correct copy of the original survey and that the same is in accordance with the laws of the State of Wyoming and the rules and regulations of the Board of Surveyors of the State of Wyoming. Witness my hand and the seal of the State of Wyoming at Green River, Wyoming, this 15th day of March, 2014.



Certificate of review of the Public Works Director or Engineer
 City of Green River Planning and Zoning Commission on this 15th day of March, 2014.

Certificate of approval by the City of Green River Planning and Zoning Commission on this 15th day of March, 2014.

Certificate of acceptance on approval by the City Council of the City of Green River on this 15th day of March, 2014.

Certificate for recording by the County Clerk and Recorder on this 15th day of March, 2014.

CURVE DATA

CURVE	DELTA	RADIUS	CHORD	ARC LENGTH	CHORD BEARING
C1	58°45'00"	210.00	112.23	178.02	175.87
C2	102°45'00"	210.00	8.25	18.25	18.25
C3	102°45'00"	210.00	8.25	18.25	18.25
C4	102°45'00"	210.00	8.25	18.25	18.25
C5	102°45'00"	210.00	8.25	18.25	18.25
C6	102°45'00"	210.00	8.25	18.25	18.25
C7	102°45'00"	210.00	8.25	18.25	18.25

DEDICATION

That the foregoing plat designated as "RIVER RIDGE ESTATES" a subdivision within the corporate city limits of Green River, Wyoming, is a subdivision within the corporate city limits of Green River, Wyoming, and is more particularly described by reference to the plat of the same on file in the office of the County Clerk and Recorder of Sweetwater County, Wyoming.

That the foregoing plat designated as "RIVER RIDGE ESTATES" a subdivision within the corporate city limits of Green River, Wyoming, is a subdivision within the corporate city limits of Green River, Wyoming, and is more particularly described by reference to the plat of the same on file in the office of the County Clerk and Recorder of Sweetwater County, Wyoming.

That the foregoing plat designated as "RIVER RIDGE ESTATES" a subdivision within the corporate city limits of Green River, Wyoming, is a subdivision within the corporate city limits of Green River, Wyoming, and is more particularly described by reference to the plat of the same on file in the office of the County Clerk and Recorder of Sweetwater County, Wyoming.

STATE OF WYOMING }
 SWEETWATER COUNTY }

The foregoing instrument was acknowledged before me on this 15th day of March, 2014, by **William A. Smith**, Surveyor, and **John Doe**, and the same is in accordance with the laws of the State of Wyoming and the rules and regulations of the Board of Surveyors of the State of Wyoming.

My commission expires on this 15th day of March, 2014.

John Doe
 Notary Public

WILLIAM A. SMITH AND ASSOCIATES P.C.
 SURVEYING CONSULTANTS
 GREEN RIVER, WYOMING 82901
 PHONE (307) 873-2548
 FAX (307) 873-2549

FINAL PLAT
 for
RIVER RIDGE ESTATES

REV. INC.
 P.O. BOX 2364
 ROCK SPRING, WYOMING 82902
 (307) 873-2548