

DEPOSITION OF SURVEYOR

I, EDUARDO FERNELIA DO HERREY, CERTIFY THAT I AM A REGISTERED LAND SURVEYOR LICENSED UNDER THE LAWS OF THE STATE OF WYOMING, THAT THIS PLAN IS A TRUE, CORRECT, AND COMPLETE PLAN OF THE STASSINOS RANCH SUBDIVISION - SECOND FILING AS LAID OUT, PLATTED, DEDICATED, AND SHOWN HEREON, THAT SUCH PLAN WAS MADE FROM AN ACCURATE SURVEY OF SAID PROPERTY BY ME AND UNDER MY SUPERVISION AND CORRECTLY SHOWS THE LOCATION AND DIMENSIONS OF THE LOTS, EASEMENTS, AND STRIPS OF SAID SUBDIVISION AS THE SAME ARE STAKED UPON THE GROUND IN COMPLIANCE WITH SWEETWATER COUNTY REGULATIONS GOVERNING THE SUBDIVISION OF LAND.

Eduardo Fernelia  
PROFESSIONAL ENGINEER AND LAND SURVEYOR  
REGISTRATION NUMBER 648

APPROVAL - COUNTY ENGINEER

APPROVED THIS 22<sup>ND</sup> DAY OF June, 1984, BY THE COUNTY ENGINEER OF SWEETWATER COUNTY, WYOMING.

John V. Nelson  
COUNTY ENGINEER

APPROVAL - PLANNING COMMISSION

THIS PLAN APPROVED BY THE SWEETWATER COUNTY PLANNING COMMISSION THIS 21<sup>ST</sup> DAY OF May, A.D., 1984.

Robert Nelson  
CHAIRMAN

APPROVAL - SWEETWATER COUNTY COMMISSIONERS

THIS PLAN APPROVED BY THE BOARD OF COUNTY COMMISSIONERS OF SWEETWATER COUNTY, WYOMING, THIS 21<sup>ST</sup> DAY OF May, A.D., 1984, FOR FILING WITH THE CLERK AND RECORDER OF SWEETWATER COUNTY AND FOR CONVEYANCE TO THE COUNTY OF THE PUBLIC DEDICATIONS SHOWN HEREON, SUBJECT TO THE PROVISION THAT APPROVAL IN NO WAY OBLIGATES SWEETWATER COUNTY FOR FINANCING OR CONSTRUCTING OR IMPROVEMENTS ON LANDS, STREETS, OR EASEMENTS DEDICATED TO THE PUBLIC EXCEPT AS SPECIFICALLY AGREED TO BY THE BOARD OF COMMISSIONERS AND, FURTHER, THAT SAID APPROVAL SHALL IN NO WAY OBLIGATE SWEETWATER COUNTY FOR MAINTENANCE OF STREETS WHICH ARE NOT DEDICATED TO THE PUBLIC NOR UNTIL ALL IMPROVEMENTS SHALL HAVE BEEN COMPLETED TO THE SATISFACTION OF THE BOARD OF COUNTY COMMISSIONERS.

DATED THIS 21<sup>ST</sup> DAY OF May, A.D., 1984.

John Nelson  
CHAIRMAN

RECORD DATE

THIS PLAN WAS FILED FOR RECORD IN THE OFFICE OF THE COUNTY CLERK AND RECORDER AT 10:00 O'CLOCK A.M. ON May 23, 1984, AND IS DAILY RECORDED IN BOOK 11, PAGE NO. 304, A

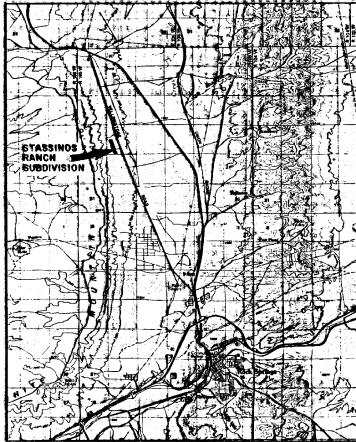
Chris B. Dean  
CLERK AND RECORDER

Dorothy Edith  
DEPUTY

530709

# FINAL PLAN STASSINOS RANCH SUBDIVISION SECOND FILING

SECTION 20 - TOWNSHIP 20 NORTH - RANGE 106 WEST  
SWEETWATER COUNTY, WYOMING



VICINITY MAP

JOHNSON-FERNELIA & CRANK, INC.  
CONSULTING ENGINEERS AND  
LAND SURVEYORS  
ROCK SPRINGS, WYOMING

DEDICATION

WE, HARRY H. STASSINOS AND EVELYN M. STASSINOS, BEING THE SOLE OWNERS OF THE LAND SHOWN ON THIS PLAN, DO HEREBY CERTIFY:

THAT THE FOREGOING PLAN DESIGNATED AS STASSINOS RANCH SUBDIVISION, SECOND FILING, IS LOCATED IN THE SOUTHWEST QUARTER OF SECTION 20, TOWNSHIP 20 NORTH, RANGE 106 WEST OF THE SIXTH PRINCIPAL MERIDIAN, SWEETWATER COUNTY, WYOMING, AND IS MORE PARTICULARLY DESCRIBED AS FOLLOWS:

- 1. BEGINNING AT A POINT LOCATED ON THE SOUTH LINE OF SAID SECTION 20, SAID POINT BEING COORDINATED NORTH 88°30'44" WEST AT A DISTANCE OF 843.87 FEET FROM THE SOUTH QUARTER CORNER OF SAID SECTION 20;
- 2. THENCE NORTH 12°1'00" WEST ALONG THE WESTERN BOUNDARY OF THE STASSINOS RANCH SUBDIVISION - FIRST FILING, FOR A DISTANCE OF 2704.14 FEET TO A POINT ON THE EAST-WEST CENTERLINE OF SAID SECTION 20;
- 3. THENCE NORTH 46°40'00" WEST ALONG THE EAST-WEST CENTERLINE OF SAID SECTION 20 FOR A DISTANCE OF 225.30 FEET;
- 4. THENCE SOUTH 17°41'00" EAST FOR A DISTANCE OF 2703.90 FEET TO A POINT ON THE SOUTH LINE OF SAID SECTION 20;
- 5. THENCE SOUTH 88°30'44" EAST ALONG THE SOUTH LINE OF SAID SECTION 20 FOR A DISTANCE OF 822.88 FEET TO THE POINT OF BEGINNING.

AND CONTAINS AN AREA OF 28.00 ACRES, MORE OR LESS, AND THAT THIS SUBDIVISION, AS IT IS DESCRIBED AND AS IT APPEARS ON THIS PLAN, IS MADE WITH THE FREE CONSENT AND IN ACCORDANCE WITH THE DESIRES OF THE UNDERTIGNED OWNERS AND HEIRETTES, AND THAT THIS IS A CORRECT PLAN OF THE AREA AS IT IS DIVIDED INTO LOTS, BLOCKS, STREETS, AND UTILITY EASEMENTS, AND THAT THE UNDERTIGNED OWNERS OF THE LAND SHOWN AND DESCRIBED ON THIS PLAN DO HEREBY DEDICATE TO THE PUBLIC USE ALL STREETS, ALLEYS, EASEMENTS, AND OTHER LANDS WITHIN THE BOUNDARY LINES OF THE PLAN AS INDICATED AND NOT ALREADY OTHERWISE DEDICATED FOR PUBLIC USE.

ALL RIGHTS UNDER AND BY VIRTUE OF THE HOMESTEAD EXEMPTION LAWS OF THE STATE OF WYOMING ARE HEREBY WAIVED AND RELEASED.

EXECUTED THIS 16 DAY OF May, 1984.  
Harry H. Stassinos  
HARRY H. STASSINOS  
Evelyn M. Stassinos  
EVELYN M. STASSINOS

STATE OF WYOMING  
COUNTY OF SWEETWATER  
THE FOREGOING INSTRUMENT WAS ACKNOWLEDGED BEFORE ME THIS 16<sup>TH</sup> DAY OF May, A.D., 1984, BY Harry H. Stassinos and Evelyn M. Stassinos AS A FREE AND VOLUNTARY ACT AND DEED.  
WITNESS MY HAND AND OFFICIAL SEAL.  
MY COMMISSION EXPIRES 26 Oct. 1985  
John V. Nelson  
NOTARY PUBLIC

VACATED BY PLAT 322  
RECORDED ON 12/7/90

KFEELDERMAN  
COUNTY SURVEYOR  
8278E

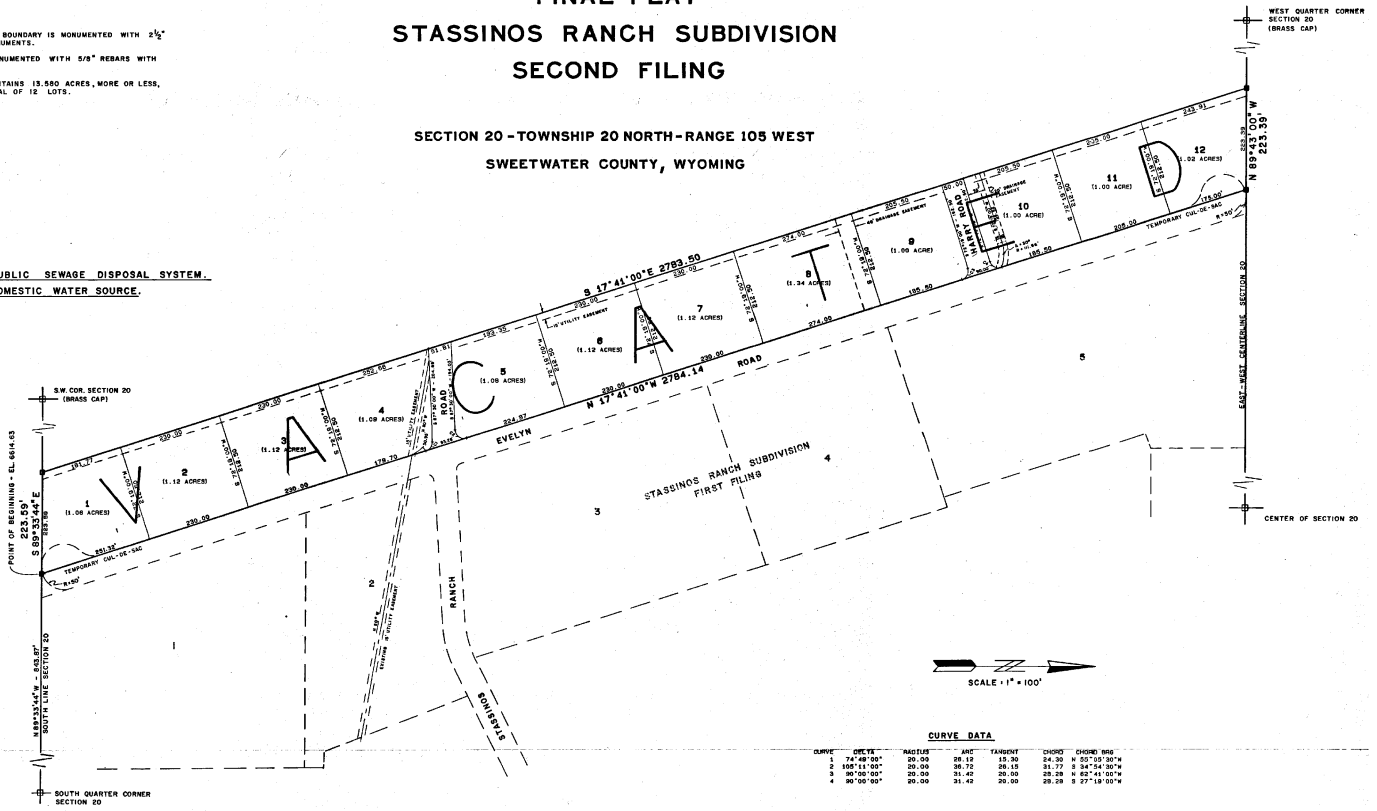
**NOTES**

EXTERIOR SUBDIVISION BOUNDARY IS MONUMENTED WITH 2 1/2" BRASS PIN FEDERAL MONUMENTS.  
 LOT CORNERS ARE MONUMENTED WITH 5/8" REBAR WITH ALUMINUM CAPS.  
 THIS SUBDIVISION CONTAINS 13.560 ACRES, MORE OR LESS, AND INCLUDES A TOTAL OF 12 LOTS.

# FINAL PLAT STASSINOS RANCH SUBDIVISION SECOND FILING

SECTION 20 - TOWNSHIP 20 NORTH - RANGE 105 WEST  
 SWEETWATER COUNTY, WYOMING

**NO PROPOSED PUBLIC SEWAGE DISPOSAL SYSTEM.**  
**NO PROPOSED DOMESTIC WATER SOURCE.**



**NOTE:**  
 EACH LOT OWNER IS REQUIRED TO OBTAIN AN ACCESS PERMIT FROM THE COUNTY ENGINEER'S OFFICE FOR ACCESS INTO EACH LOT FROM THE COUNTY ROAD.

JOHNSON-FERMELIA & CRANK, INC.  
 CONSULTING ENGINEERS AND  
 LAND SURVEYORS  
 ROCK SPRINGS, WYOMING