

# FINAL PLAT DESERT VILLAGE SUBDIVISION FIRST FILING ROCK SPRINGS WYOMING

SECTION 23, T19N, R105W  
SWEETWATER COUNTY, WYOMING

JOHNSON - FERRELIA & CRANK, INC.  
CONSULTING ENGINEERS &  
LAND SURVEYORS

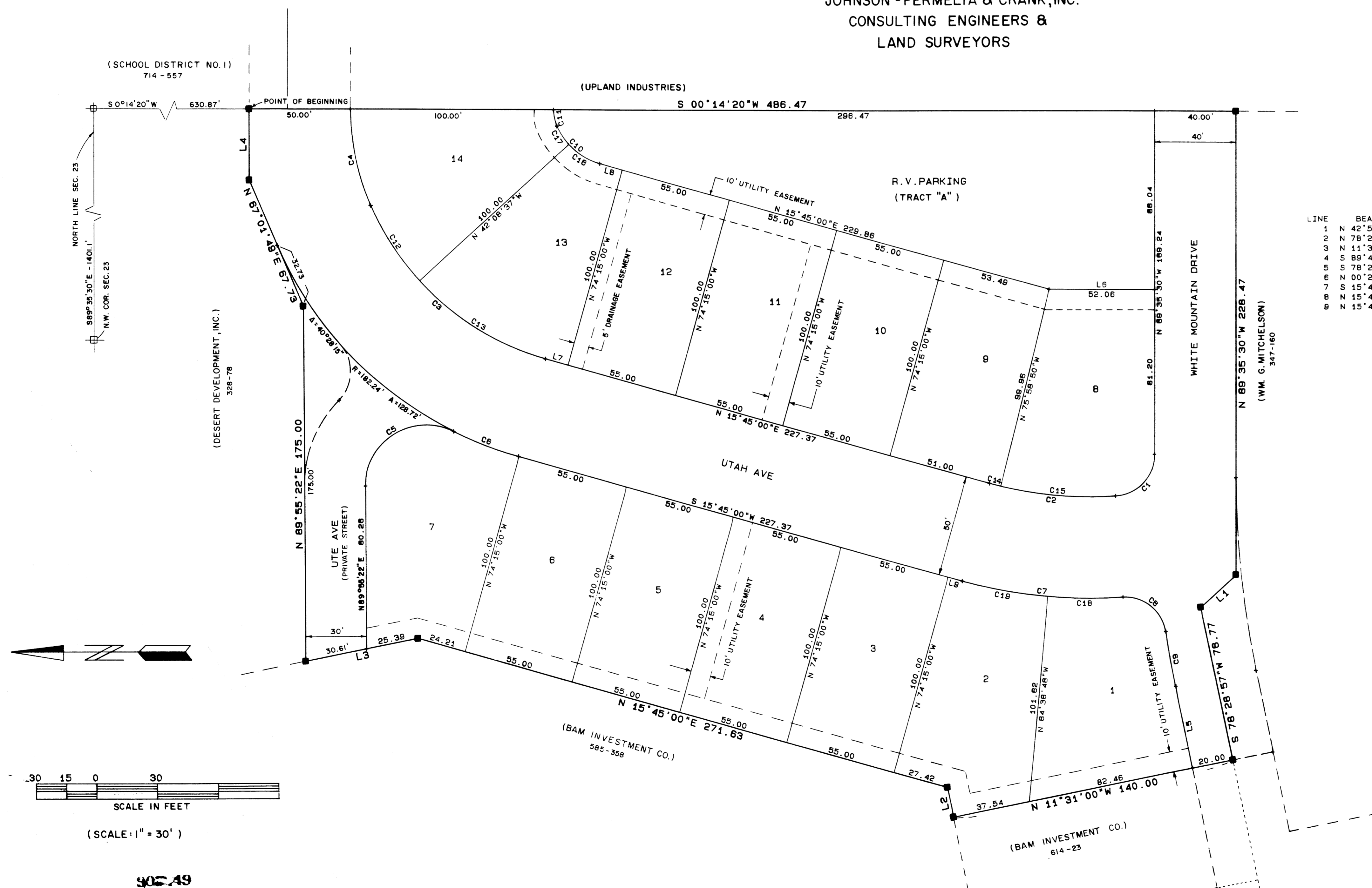
**NOTES**

1) THIS SUBDIVISION CONTAINS A TOTAL OF 3.23 ACRES,  
AND INCLUDES A TOTAL OF 14 LOTS AND AN R.V. PARKING  
TRACT

**MONUMENTS**

3/4" REBAR WITH ALUMINUM CAP STAMPED "PROP. COR."  
J.F.C. P.E.L.S. - 659"

T INDICATES LOT CORNERS



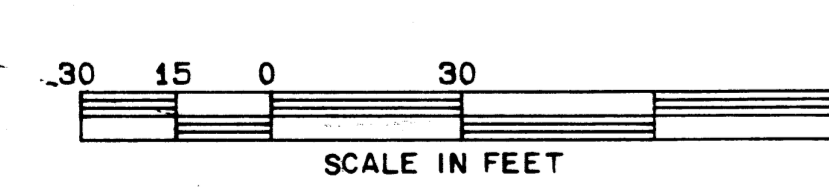
LINE	BEARINGS	DISTANCE	CURVE	DELTA	RADIUS	ARC	TANGENT	CHORD	CHORD BRG
1	N 42°52'59"W	23.42	1	85°45'00"	20.64	30.88	18.16	28.08	N 46°43'00"W
2	N 78°28'00"E	15.00	2	19°35'30"	182.50	62.41	31.51	62.10	N 05°57'15"E
3	N 11°31'00"W	56.00	3	51°16'49"	132.24	118.36	63.47	114.44	N 41°23'24"E
4	S 88°45'40"E	35.00	4	23°12'31"	120.44	48.79	24.73	48.45	N 78°38'04"E
5	S 78°29'10"W	41.06	5	118°38'12"	30.00	61.07	45.61	51.06	S 51°45'32"E
6	N 00°24'30"E	52.06	6	10°48'34"	182.24	34.38	17.24	34.33	S 21°08'17"W
7	S 15°45'00"W	11.37	7	18°35'30"	232.50	79.50	40.14	79.12	S 05°57'15"W
8	N 15°45'00"E	11.37	8	85°28'03"	20.00	28.83	18.48	27.14	S 38°53'31"W
9	N 15°45'00"E	7.37	9	3°08'36"	498.70	27.36	13.88	27.36	S 80°03'15"W
10	N 15°45'00"E	7.37	10	51°18'49"	32.24	28.85	15.47	27.80	N 41°23'24"E
11	N 15°45'00"E	7.37	11	23°12'31"	20.44	8.28	4.20	8.22	N 78°38'04"E
12	N 15°45'00"E	7.37	12	19°10'28"	132.24	44.25	22.34	44.05	S 57°28'38"W
13	N 15°45'00"E	7.37	13	32°06'23"	132.24	74.10	38.05	73.14	S 31°48'11"W
14	N 15°45'00"E	7.37	14	1°43'50"	182.50	5.51	2.76	5.51	S 14°53'05"W
15	N 15°45'00"E	7.37	15	17°51'40"	182.50	56.89	28.88	56.88	S 05°05'20"W
16	N 15°45'00"E	7.37	16	32°06'23"	132.24	18.07	8.28	17.83	N 31°48'11"E
17	N 15°45'00"E	7.37	17	19°10'28"	132.24	10.79	5.45	10.74	N 57°28'38"W
18	N 15°45'00"E	7.37	18	8°11'43"	232.50	37.31	18.70	37.27	N 00°45'21"E
19	N 15°45'00"E	7.37	19	10°23'48"	232.50	42.18	21.15	42.13	N 10°33'06"E

RECORD DATE

THIS PLAT WAS FILED FOR RECORD IN THE OFFICE OF THE CLERK AND  
RECORDER AT 11:00 O'CLOCK A.M., June 24, 1988, AND IS DULY  
RECORDED IN BOOK 296-A, PAGE NO. 296-A

*Robert B. Wason*  
COUNTY CLERK

*Margaret Hasky*  
ATTEST DEPUTY



902-49

NOVEMBER 1982  
SHEET 2 OF 2