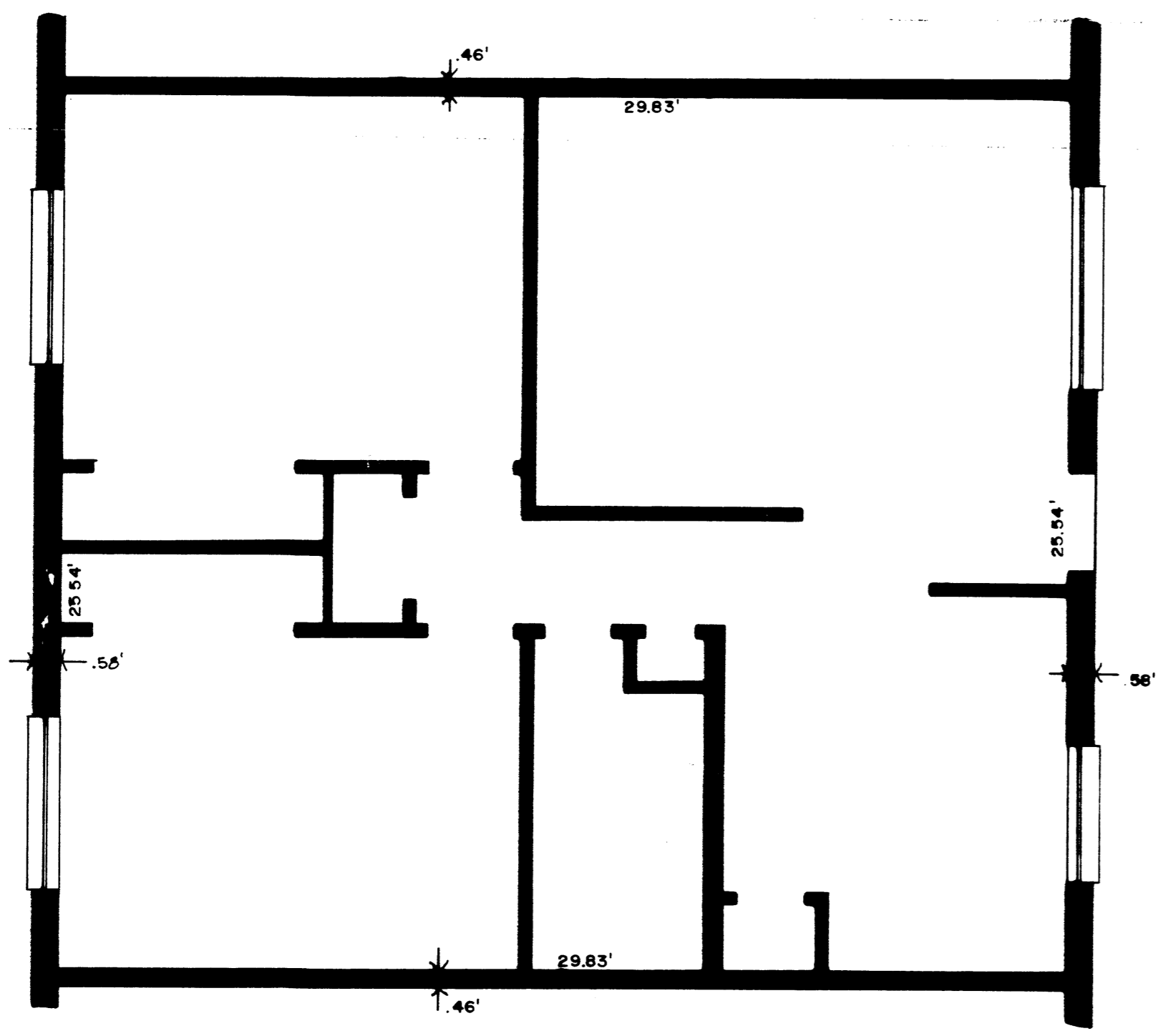
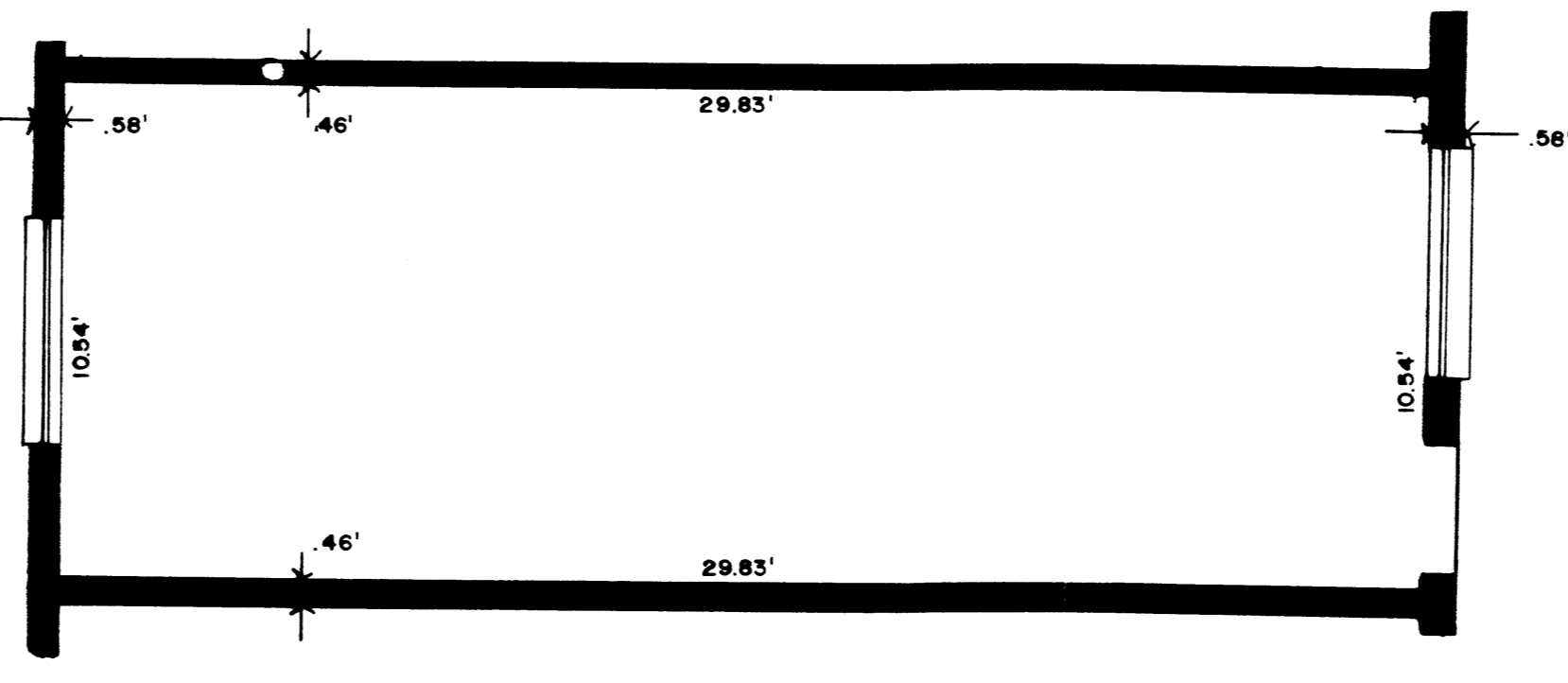


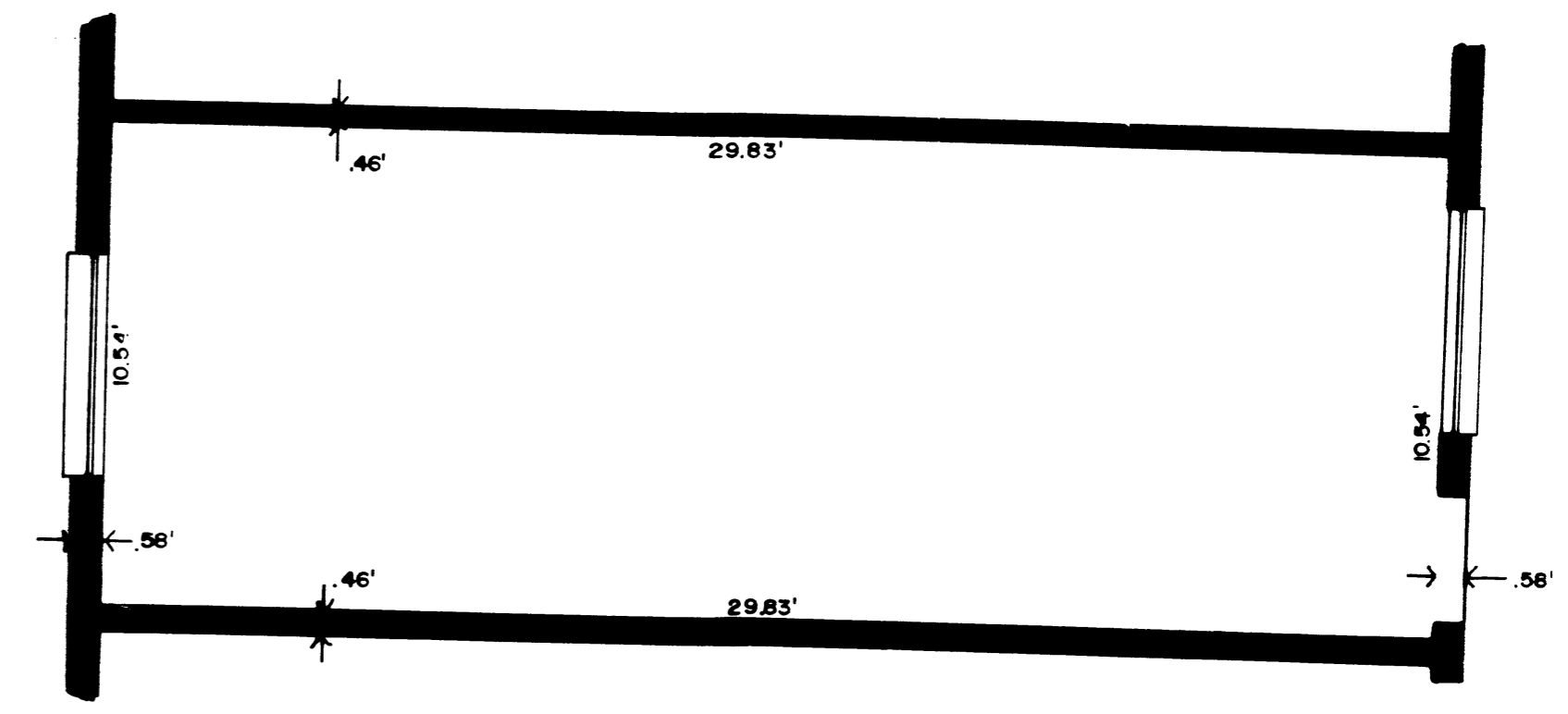
FINAL PLAT OF:  
**AVA. APARTMENT COMPLEX**  
AN APARTMENT COMPLEX ON A PARCEL OF LAND LYING IN THE  
SOUTHEAST 1/4 OF SECTION 34, TOWNSHIP 19 NORTH, RANGE 105  
WEST, 6th PRINCIPAL MERIDIAN, ROCK SPRINGS, SWEETWATER  
COUNTY, WYOMING.



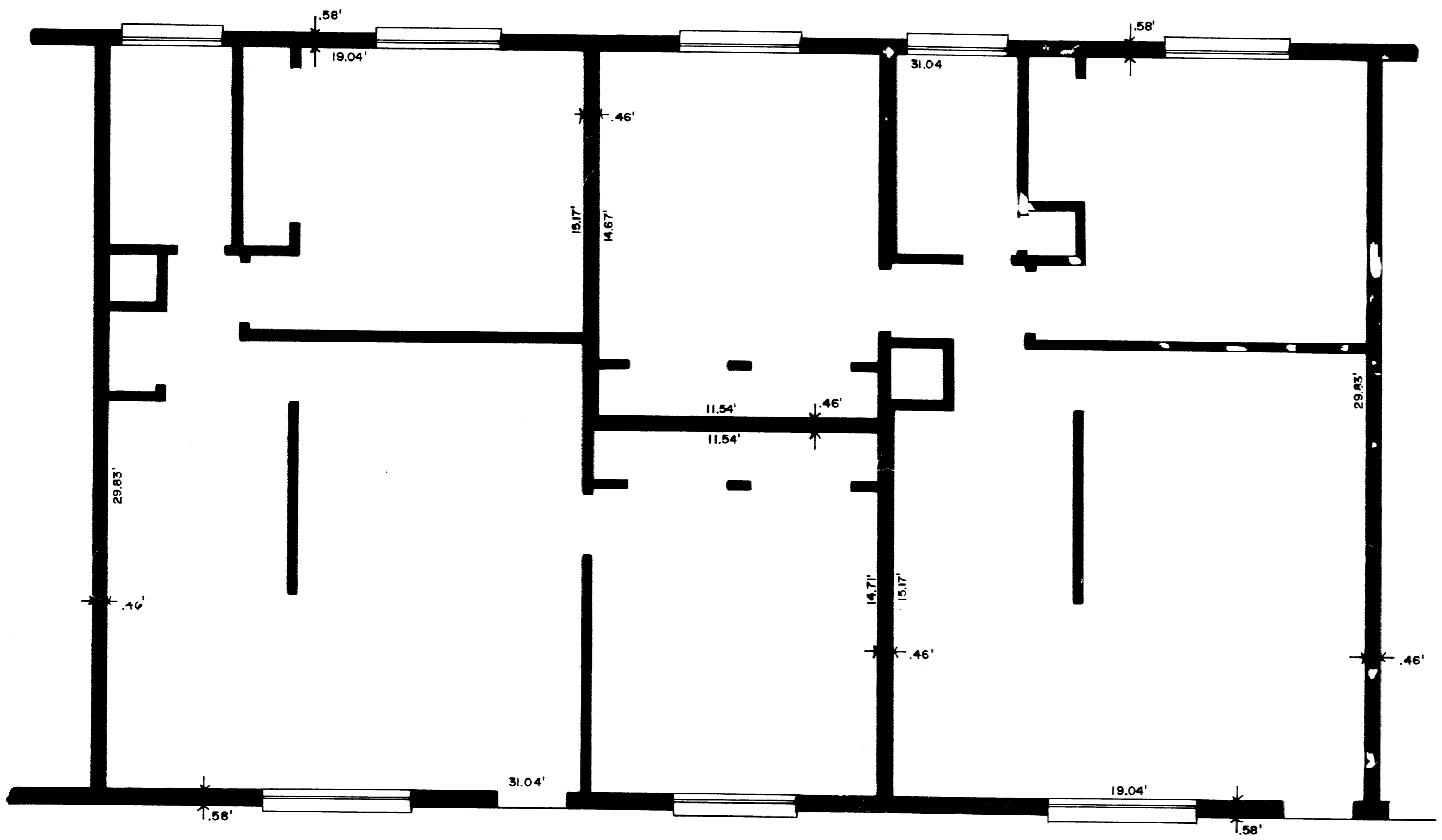
UNIT "E"



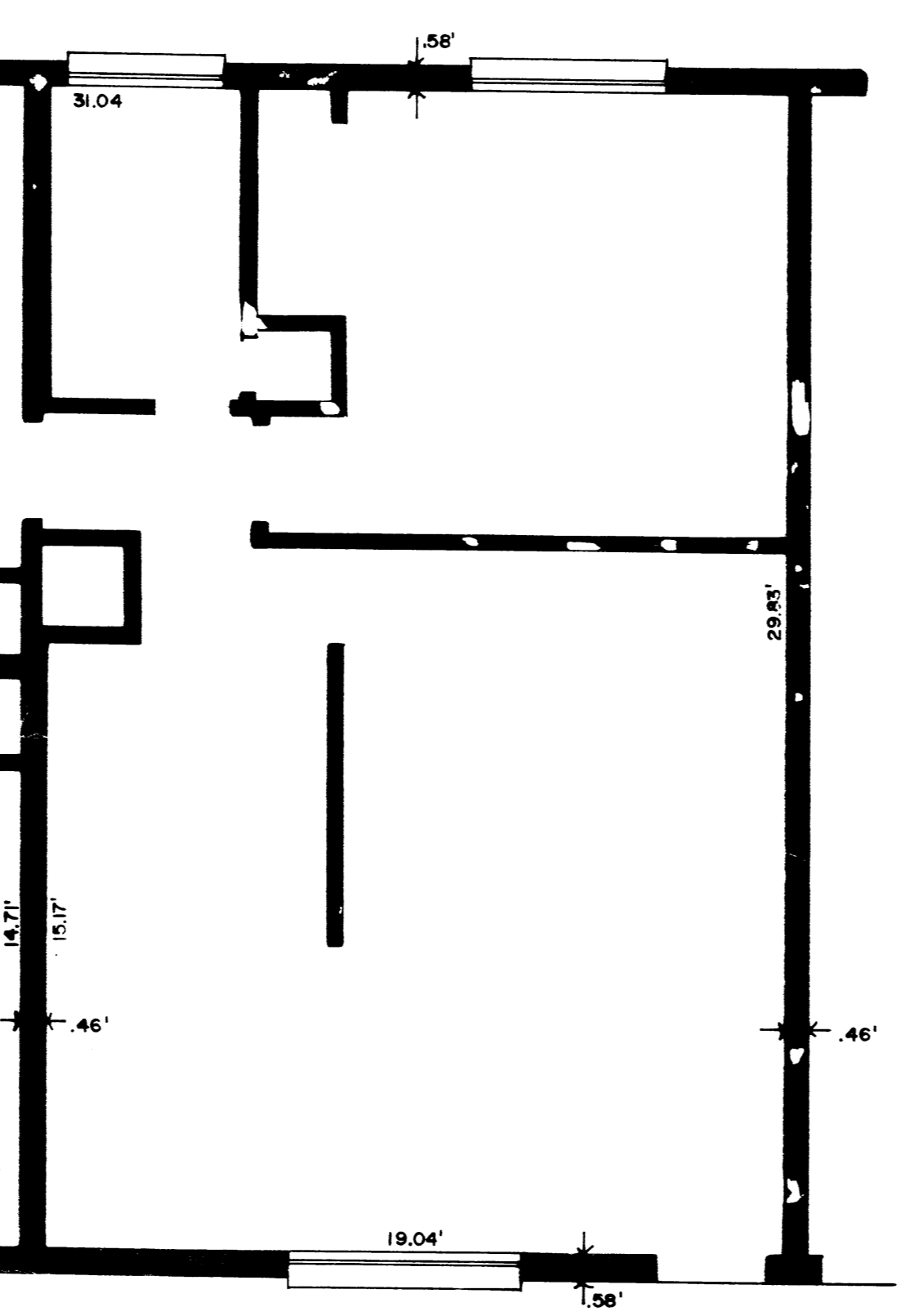
2nd FLOOR LAUNDRY ROOM



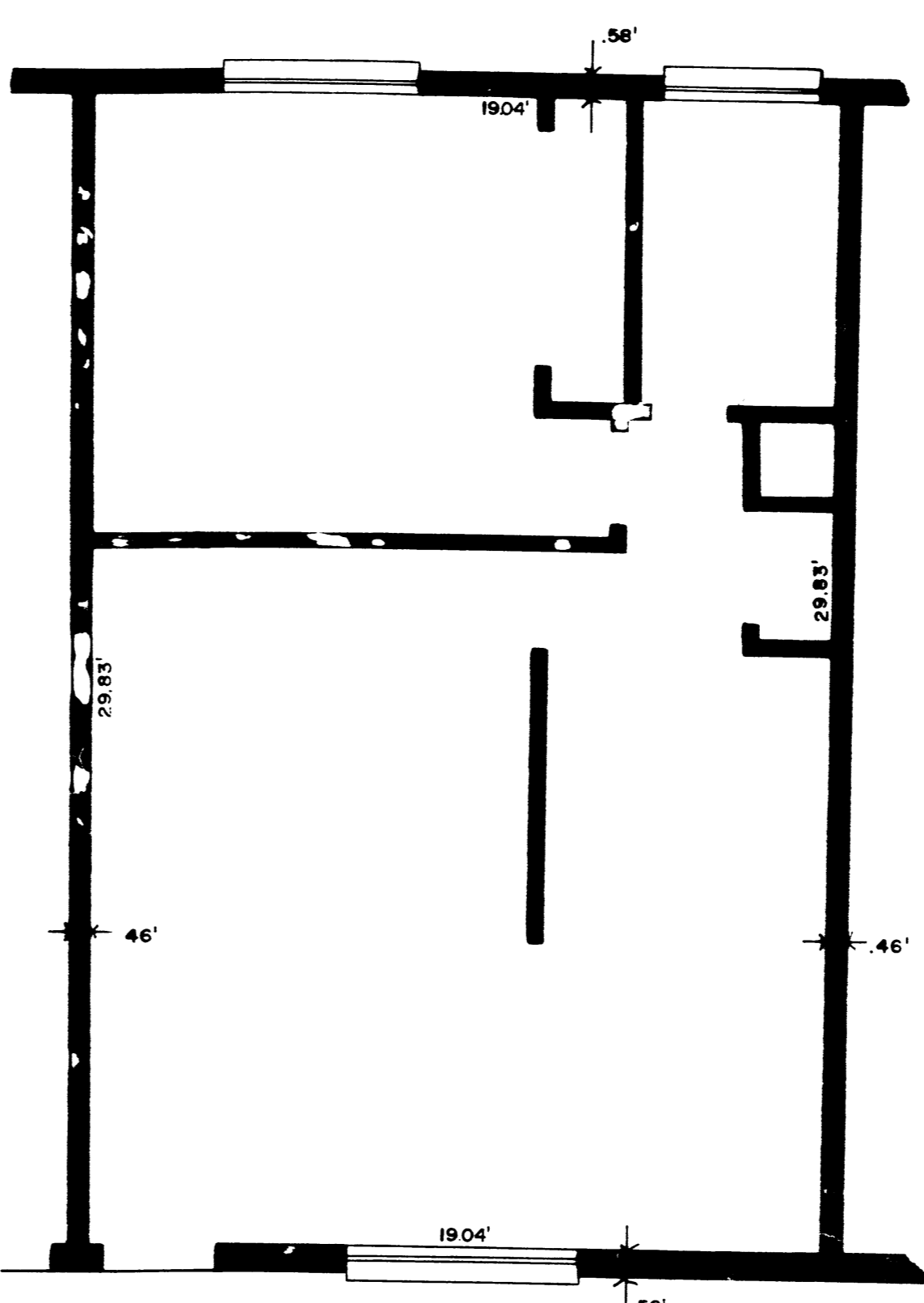
1st FLOOR FURNACE ROOM



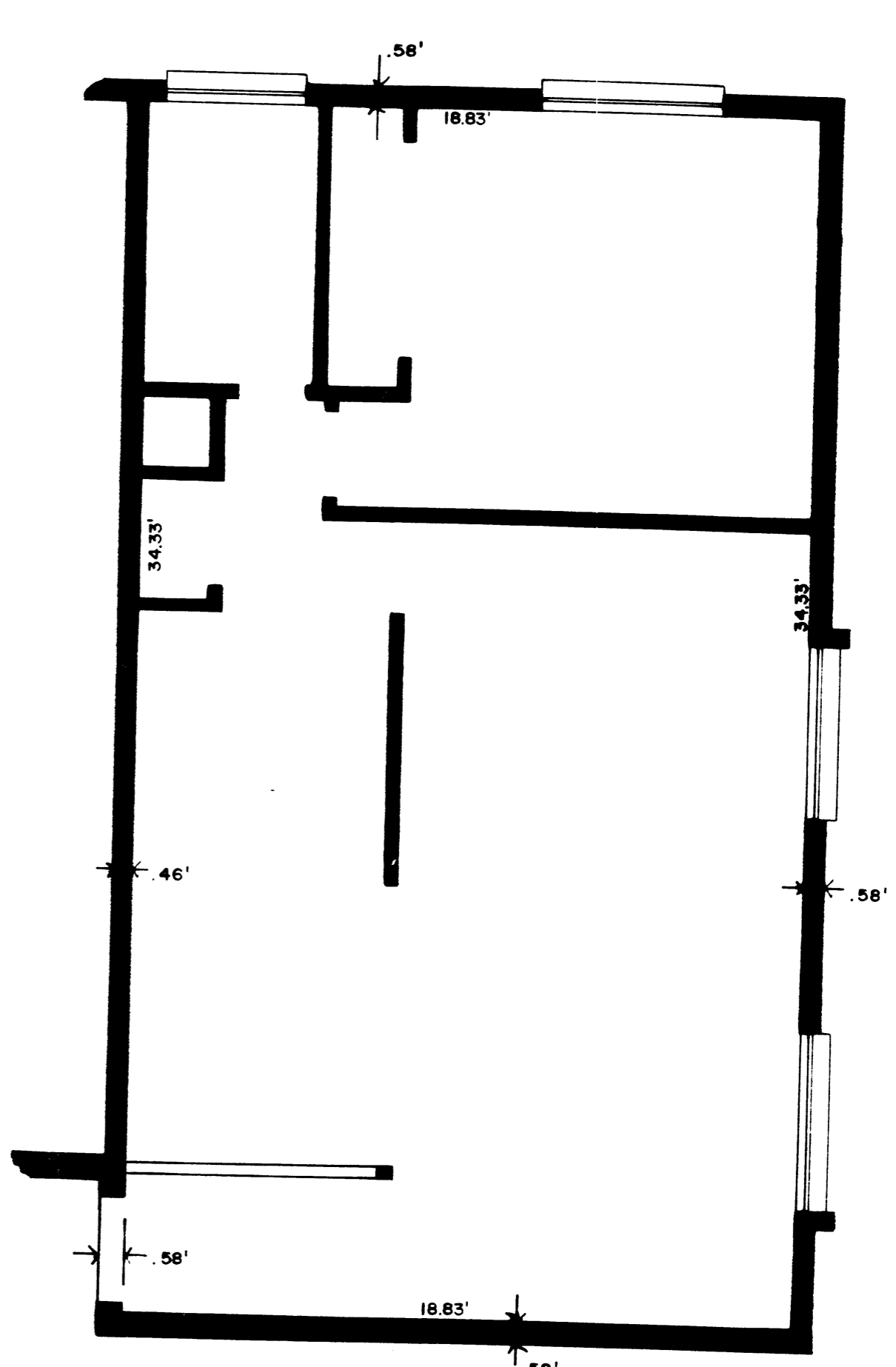
UNIT "C"



UNIT "B"



UNIT "A"



UNIT "D"

**TYPICAL UNIT FLOOR PLANS**  
SCALE 1/4" = 1'-0"

PREPARED FOR:  
JOHN ANSELM  
PO. BOX 1087  
ROCK SPRINGS, WYOMING

PREPARED BY:  
BUSH & GUDGELL INC.  
2506 FOOTHILL BLVD., P.O. BOX 144  
ROCK SPRINGS, WYOMING 382-2876

DATE: FEB. 12, 1982  
JOB NO. 1537-B  
DRAWN BY: M.S.A.  
CHECKED BY: W.W.G.

SCALE: 1" = 14'  
SHEET 1 OF 4

OFFICE COPY