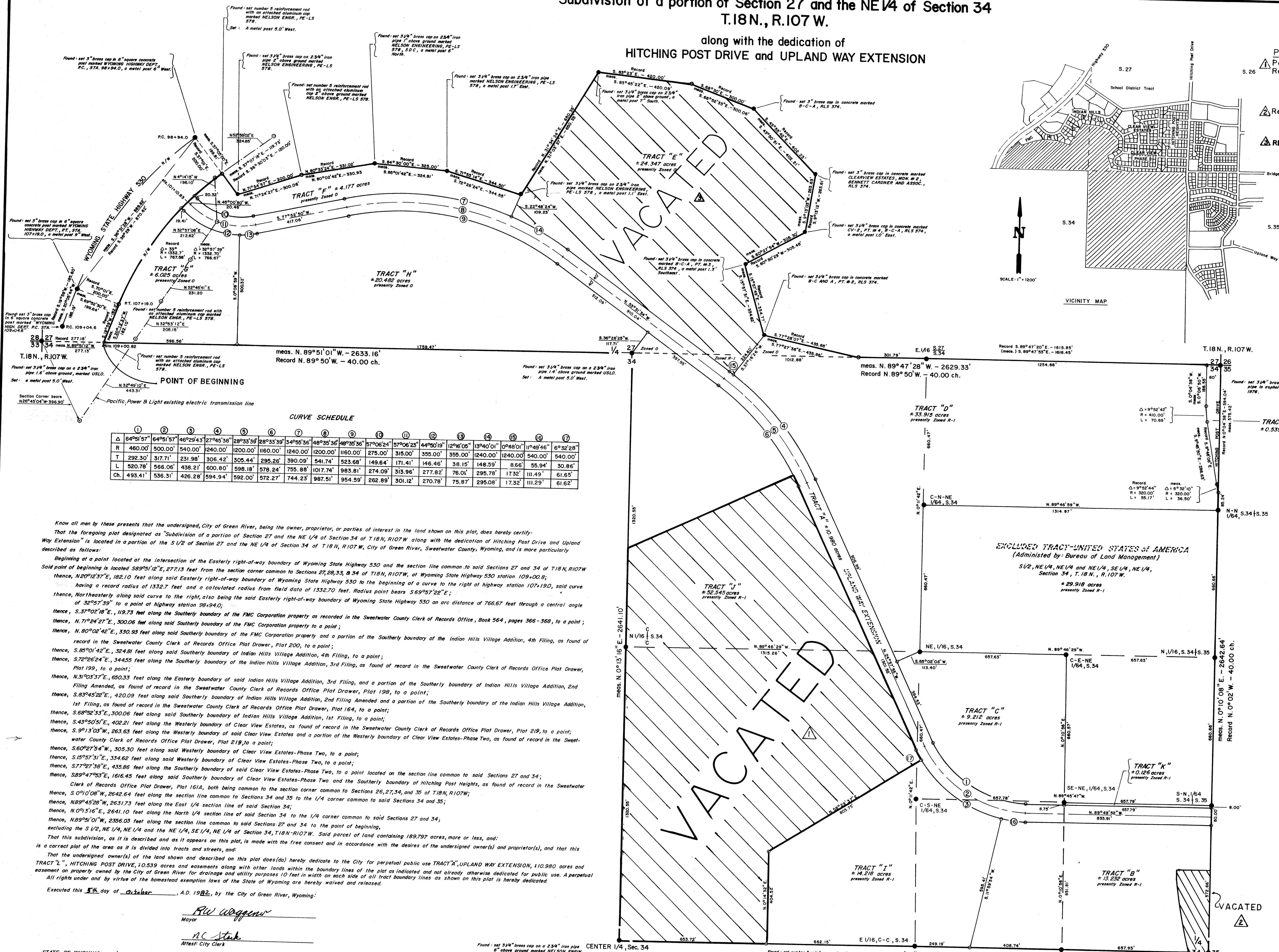


Subdivision of a portion of Section 27 and the NE 1/4 of Section 34
T.18N., R.107W.

along with the dedication of
HITCHING POST DRIVE and UPLAND WAY EXTENSION



PARTIALLY VACATED BY REPLAT
Portion of Tract "J" - By Plat 395
Recorded 12/17/99

K. Felderman (MAR)
County Surveyor
6/28/00

Replat - Plat #387 - 11/6/1997
MBR 7/14/2003

REPLAT - Plat #438 - 2/10/2005
KGM 6/29/2005

K. Magrath
County Surveyor
6/29/2005

SCALE: 1"=200'
Basis of bearing are true bearings as calculated from the
WYOMING STATE COORDINATE SYSTEM, WEST CENTRAL ZONE.

LEGEND
○ - unless otherwise noted indicates a set number 5 reinforcement
rod with an attached aluminum cap marked RLS 3889.

● - unless otherwise noted indicates a set 3/4" brass cap on a 2 3/4" iron
pipe marked WYOMING DEPT. OF HIGHWAYS, JOB 82043, RLS 3888.

○ - utility pole

OWNER & SUBDIVIDER
City of Green River, Wyoming
30 East Second North
Green River, Wyoming 82935
307-875-5000

SURVEYOR'S CERTIFICATE

I, Randall J. Rowley, do hereby certify that I am a registered land
surveyor licensed under the laws of the State of Wyoming; that this
plot is a true, correct, and complete plat of the Subdivision of a
portion of Section 27 and the NE 1/4 of Section 34, T.18N., R.107W., along
with the dedication of HITCHING POST DRIVE and UPLAND WAY EX-
TENSION as laid out, located, dedicated, and shown hereon; that such
plot was made from an accurate survey of said property by me and
personnel under my supervision, and correctly shows the location
and dimensions of the tracts and streets of said subdivision as the
same are shown upon the ground in compliance with the Town of
Green River regulations governing the subdivision of land.

Wyoming RLS No. 3888

PLANNING COMMISSION'S CERTIFICATE

This plat approved by the City of Green River Planning Commission on
this 5th day of OCT, A.D. 1982.

Chairman
Secretary

CITY COUNCIL'S CERTIFICATE

Approved by the City Council of the City of Green River, Wyoming on
this 5th day of OCT, A.D. 1982.

Mayor
City Clerk

COUNTY CLERK'S CERTIFICATE

This plat was filed for record in the Office of the County Clerk and
Recorder at 11:00 a.m. on OCT 10, 1982, and is duly recorded in Book No. 198, Page No. 888714.

County Clerk

CITY ENGINEER'S CERTIFICATE

Data on this plat reviewed this 1st day of OCT, A.D. 1982,
by the City Engineer, and found correct.

City Engineer

3575
REGISTERED
PROFESSIONAL
ENGINEER
OF
THE STATE OF WYOMING

FINAL PLAT

Subdivision of a portion of Section 27 and the NE
1/4 of Section 34, T.18N., R.107W.

along with the dedication of
HITCHING POST DRIVE and UPLAND WAY EXTENSION

located in a portion of the SW 1/4 of Section 27 and the NE 1/4 of Section 34
T.18N., R.107W., 6th P.M., Sweetwater County, Wyoming.

prepared for
CITY OF GREEN RIVER, WYOMING

prepared by
William H. Smith and Associates, P.C.
Surveying Consultants

DATE: 7/28/82
JOB NO. 82043.000
Revised: 8/11/82

STATE OF WYOMING
COUNTY OF SWEETWATER) SS
The foregoing instrument was acknowledged before me this 5th day of OCT, A.D. 1982, by R.W. Waggoner
as a free and voluntary act and deed. Witness my hand and official seal. My commission expires Feb. 28, 1983.
Notary Public