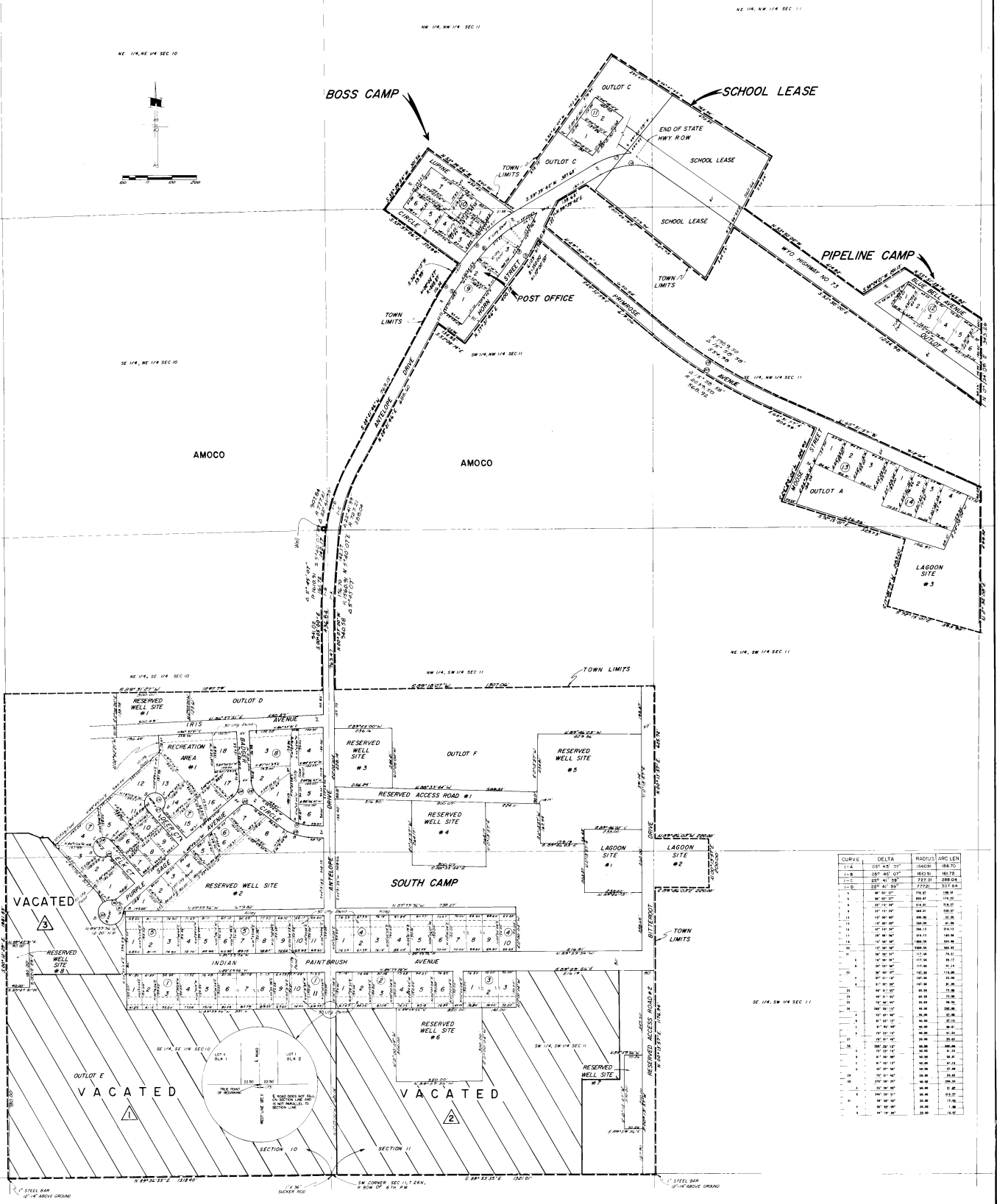




NW CORNER SECTION 11,  
T26N, R 90W



CURVE	DELTA	RADIUS	ARC LEN
1-1	104.45° 57'	160.00'	160.00'
1-2	104.45° 57'	160.00'	160.00'
1-3	104.45° 57'	160.00'	160.00'
1-4	104.45° 57'	160.00'	160.00'
1-5	104.45° 57'	160.00'	160.00'
1-6	104.45° 57'	160.00'	160.00'
1-7	104.45° 57'	160.00'	160.00'
1-8	104.45° 57'	160.00'	160.00'
1-9	104.45° 57'	160.00'	160.00'
1-10	104.45° 57'	160.00'	160.00'
1-11	104.45° 57'	160.00'	160.00'
1-12	104.45° 57'	160.00'	160.00'
1-13	104.45° 57'	160.00'	160.00'
1-14	104.45° 57'	160.00'	160.00'
1-15	104.45° 57'	160.00'	160.00'
1-16	104.45° 57'	160.00'	160.00'
1-17	104.45° 57'	160.00'	160.00'
1-18	104.45° 57'	160.00'	160.00'
1-19	104.45° 57'	160.00'	160.00'
1-20	104.45° 57'	160.00'	160.00'
1-21	104.45° 57'	160.00'	160.00'
1-22	104.45° 57'	160.00'	160.00'
1-23	104.45° 57'	160.00'	160.00'
1-24	104.45° 57'	160.00'	160.00'
1-25	104.45° 57'	160.00'	160.00'
1-26	104.45° 57'	160.00'	160.00'
1-27	104.45° 57'	160.00'	160.00'
1-28	104.45° 57'	160.00'	160.00'
1-29	104.45° 57'	160.00'	160.00'
1-30	104.45° 57'	160.00'	160.00'
1-31	104.45° 57'	160.00'	160.00'
1-32	104.45° 57'	160.00'	160.00'
1-33	104.45° 57'	160.00'	160.00'
1-34	104.45° 57'	160.00'	160.00'
1-35	104.45° 57'	160.00'	160.00'
1-36	104.45° 57'	160.00'	160.00'
1-37	104.45° 57'	160.00'	160.00'
1-38	104.45° 57'	160.00'	160.00'
1-39	104.45° 57'	160.00'	160.00'
1-40	104.45° 57'	160.00'	160.00'
1-41	104.45° 57'	160.00'	160.00'
1-42	104.45° 57'	160.00'	160.00'
1-43	104.45° 57'	160.00'	160.00'
1-44	104.45° 57'	160.00'	160.00'
1-45	104.45° 57'	160.00'	160.00'
1-46	104.45° 57'	160.00'	160.00'
1-47	104.45° 57'	160.00'	160.00'
1-48	104.45° 57'	160.00'	160.00'
1-49	104.45° 57'	160.00'	160.00'
1-50	104.45° 57'	160.00'	160.00'
1-51	104.45° 57'	160.00'	160.00'
1-52	104.45° 57'	160.00'	160.00'
1-53	104.45° 57'	160.00'	160.00'
1-54	104.45° 57'	160.00'	160.00'
1-55	104.45° 57'	160.00'	160.00'
1-56	104.45° 57'	160.00'	160.00'
1-57	104.45° 57'	160.00'	160.00'
1-58	104.45° 57'	160.00'	160.00'
1-59	104.45° 57'	160.00'	160.00'
1-60	104.45° 57'	160.00'	160.00'
1-61	104.45° 57'	160.00'	160.00'
1-62	104.45° 57'	160.00'	160.00'
1-63	104.45° 57'	160.00'	160.00'
1-64	104.45° 57'	160.00'	160.00'
1-65	104.45° 57'	160.00'	160.00'
1-66	104.45° 57'	160.00'	160.00'
1-67	104.45° 57'	160.00'	160.00'
1-68	104.45° 57'	160.00'	160.00'
1-69	104.45° 57'	160.00'	160.00'
1-70	104.45° 57'	160.00'	160.00'
1-71	104.45° 57'	160.00'	160.00'
1-72	104.45° 57'	160.00'	160.00'
1-73	104.45° 57'	160.00'	160.00'
1-74	104.45° 57'	160.00'	160.00'
1-75	104.45° 57'	160.00'	160.00'
1-76	104.45° 57'	160.00'	160.00'
1-77	104.45° 57'	160.00'	160.00'
1-78	104.45° 57'	160.00'	160.00'
1-79	104.45° 57'	160.00'	160.00'
1-80	104.45° 57'	160.00'	160.00'
1-81	104.45° 57'	160.00'	160.00'
1-82	104.45° 57'	160.00'	160.00'
1-83	104.45° 57'	160.00'	160.00'
1-84	104.45° 57'	160.00'	160.00'
1-85	104.45° 57'	160.00'	160.00'
1-86	104.45° 57'	160.00'	160.00'
1-87	104.45° 57'	160.00'	160.00'
1-88	104.45° 57'	160.00'	160.00'
1-89	104.45° 57'	160.00'	160.00'
1-90	104.45° 57'	160.00'	160.00'
1-91	104.45° 57'	160.00'	160.00'
1-92	104.45° 57'	160.00'	160.00'
1-93	104.45° 57'	160.00'	160.00'
1-94	104.45° 57'	160.00'	160.00'
1-95	104.45° 57'	160.00'	160.00'
1-96	104.45° 57'	160.00'	160.00'
1-97	104.45° 57'	160.00'	160.00'
1-98	104.45° 57'	160.00'	160.00'
1-99	104.45° 57'	160.00'	160.00'
1-100	104.45° 57'	160.00'	160.00'

280-A

NOTE: ALL MONUMENTS ARE 5" X 4" REBAR EXCEPT WHERE NOTED.

**AMENDED FILING PLAT OF THE TOWN OF BAIRDL**  
 A PORTION OF SECTION 10 & 11, TOWNSHIP 26 NORTH,  
 RANGE 90 WEST OF SIXTH PRINCIPAL MERIDIAN  
 IN SWEETWATER COUNTY, WYOMING

280-A