



# FREMONT ADDITION

A SUBDIVISION IN THE TOWN OF GREEN RIVER, WYOMING

**ZONE USE R-2**

← CURVE DATA →

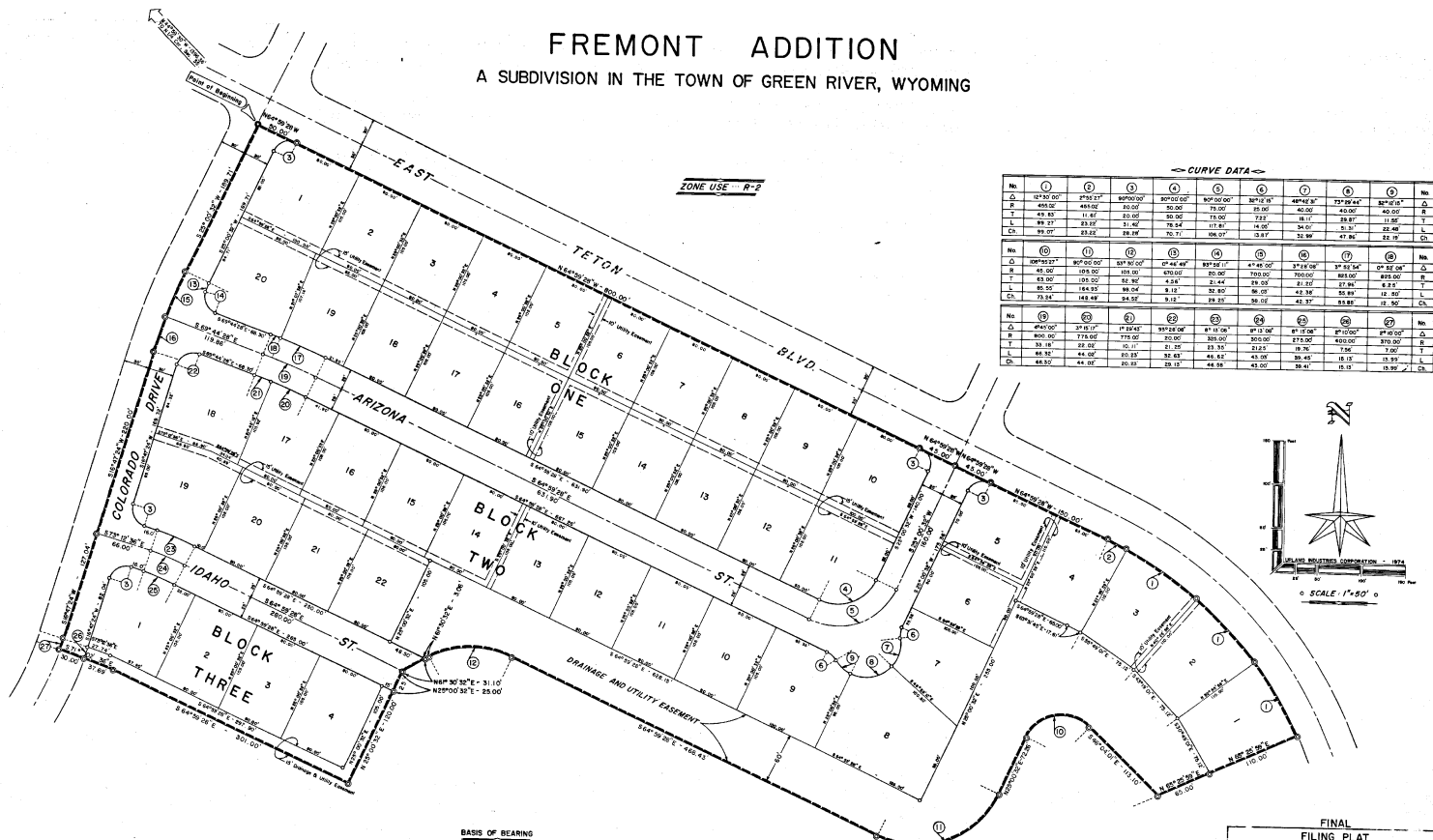
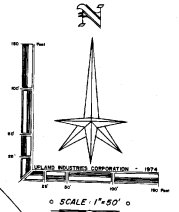
No.	①	②	③	④	⑤	⑥	⑦	⑧	⑨	No.
R	127.90	278.27	307.92	307.92	342.00	247.78	448.48	277.84	347.07	1
T	495.02	449.02	33.00	50.00	75.00	15.00	40.00	42.00	60.00	2
L	89.27	23.07	21.40	78.54	111.87	18.00	34.50	58.87	11.86	3
Ch.	89.27	23.07	21.40	78.54	111.87	18.00	34.50	58.87	11.86	4

No.	⑩	⑪	⑫	⑬	⑭	⑮	⑯	⑰	⑱	No.
R	42.00	105.00	105.00	470.00	300.00	700.00	700.00	800.00	470.00	5
T	83.00	105.00	88.36	4.84	21.44	78.00	21.72	27.86	6.25	6
L	83.00	105.00	88.36	4.84	21.44	78.00	21.72	27.86	6.25	7
Ch.	73.33	148.49	84.52	9.13	19.33	38.02	43.37	53.88	12.50	8

No.	⑲	⑳	㉑	㉒	㉓	㉔	㉕	㉖	㉗	No.
R	800.00	178.00	125.00	200.00	300.00	300.00	475.00	400.00	370.00	9
T	33.45	22.02	10.11	21.20	23.35	21.21	19.76	13.46	3.00	10
L	88.70	44.04	20.22	22.48	46.72	43.00	39.43	18.13	13.93	11
Ch.	48.32	44.02	20.22	22.13	46.38	42.00	38.87	18.13	13.93	12



**BASES OF BEARING**  
 5 89° 46' 26" E. ON THE NORTH LINE OF SECTION 35, RESURVEY  
 TOWNSHIP 18 NORTH, RANGE 107 WEST OF THE SIXTH  
 PRINCIPAL MERIDIAN PER INFORMATION OBTAINED FROM  
 NELSON ENGINEERING.

RECORDED IN BOOK 107 PAGE 117 BY L. H. BAKER ENGINEERING CO. 1974  
 FILE NO. 456721

**FINAL**  
**FILING PLAT**  
**FREMONT ADDITION**  
**A SUBDIVISION IN THE TOWN OF**  
**GREEN RIVER, WYOMING**

DRAWN BY: **2**  
 CHECKED BY: **2**  
 DATE: **11-21-74** **1"=50'** DRH RFW **2**