

AMENDED DUTCH JOHN ADDITION

A SUBDIVISION IN THE TOWN OF GREEN RIVER, WYOMING

A PART OF NW 1/4 OF SECTION 35, T18N., R.107 W. OF THE 6 TH PM.

KNOW ALL MEN BY THESE PRESENTS: THAT THE UNDERSIGNED UNION PACIFIC LAND RESOURCES CORPORATION, A CORPORATION OF THE STATE OF UTAH, BEING THE OWNER OF THE LAND SHOWN ON THIS "PLAT," DOES HEREBY CERTIFY THAT THE FOREGOING PLAT OF THE AMENDED DUTCH JOHN ADDITION, A SUBDIVISION IN THE TOWN OF GREEN RIVER, COUNTY OF SWEETWATER, STATE OF WYOMING, IS SITUATE IN THE NORTHWEST QUARTER (NW 1/4) OF SECTION 35, RESERVEY TOWNSHIP 18 NORTH, RANGE 107 WEST OF THE SIXTH PRINCIPAL MERIDIAN, SWEETWATER COUNTY, WYOMING, BOUNDED AND DESCRIBED AS FOLLOWS:

COMMENCING AT THE NORTHWEST CORNER OF SAID SECTION 35;

THENCE ALONG THE NORTH LINE OF SAID SECTION 35, S89°46'24"E A DISTANCE OF 1340.00 FEET;

THENCE S 0°13'36"W, A DISTANCE OF 765.46 FEET TO THE TRUE POINT OF BEGINNING;

THENCE S89°46'24"E, A DISTANCE OF 38.35 FEET TO THE BEGINNING OF A TANGENT CURVE CONCAVE NORTHERLY HAVING A RADIUS OF 200.00 FEET;

THENCE EASTERLY ALONG SAID CURVE, THROUGH A CENTRAL ANGLE OF 13°29'08" AN ARC DISTANCE OF 47.07 FEET;

THENCE TANGENT TO THE LAST DESCRIBED CURVE, N78°44'28"E, A DISTANCE OF 118.33 FEET TO THE BEGINNING OF A TANGENT CURVE CONCAVE SOUTHEASTERLY HAVING A RADIUS OF 350.00 FEET;

THENCE NORTHEASTERLY ALONG SAID CURVE, THROUGH A CENTRAL ANGLE OF 12°00'07" AN ARC DISTANCE OF 73.32 FEET;

THENCE TANGENT TO THE LAST DESCRIBED CURVE, N 88°44'35"E, A DISTANCE OF 437.85 FEET;

THENCE S17°57'31"W, A DISTANCE OF 1419.58 FEET;

THENCE N72°02'29"W, A DISTANCE OF 282.24 FEET TO THE BEGINNING OF A TANGENT CURVE CONCAVE SOUTHERLY HAVING A RADIUS OF 330.00 FEET;

THENCE WESTERLY ALONG SAID CURVE THROUGH A CENTRAL ANGLE OF 28°13'55" AN ARC DISTANCE OF 145.33 FEET;

THENCE TANGENT TO THE LAST DESCRIBED CURVE, S 82°43'36"W, A DISTANCE OF 2814 FEET;

THENCE N7°16'24"W, A DISTANCE OF 37.22 FEET TO THE BEGINNING OF A TANGENT CURVE CONCAVE SOUTHEASTERLY HAVING A RADIUS OF 438.86 FEET;

THENCE NORTHEASTERLY ALONG SAID CURVE, THROUGH A CENTRAL ANGLE OF 49°00'00" AN ARC DISTANCE OF 375.32 FEET;

THENCE TANGENT TO THE LAST DESCRIBED CURVE, N41°43'36"E, A DISTANCE OF 252.00 FEET TO THE BEGINNING OF A TANGENT CURVE CONCAVE WESTERLY HAVING A RADIUS OF 327.89 FEET;

THENCE NORTHERLY ALONG SAID CURVE, THROUGH A CENTRAL ANGLE OF 41°30'00" AN ARC DISTANCE 382.36 FEET;

THENCE TANGENT TO THE LAST DESCRIBED CURVE, N 0°13'36"E, A DISTANCE OF 319.54 FEET TO THE TRUE POINT OF BEGINNING.

CONTAINING AN AREA OF 19.21 ACRES, MORE OR LESS.

THAT SAID ADDITION, AS IT APPEARS ON THIS PLAT, IS MADE WITH THE FREE CONSENT AND IN ACCORD WITH THE DESIRES OF THE UNDERSIGNED OWNERS THEREOF, THAT THE PLAT OF SAID ADDITION, AS DIVIDED INTO LOTS, BLOCKS AND STREETS, SHOWS THE DIMENSIONS THEREOF CORRECTLY BY FIGURES REPRESENTING FEET AND DECIMALS OF A FOOT, AND THE COURSES OF THE LOTS, BLOCKS AND STREETS ARE CORRECTLY SHOWN THEREON.

THAT THE UNDERSIGNED OWNERS OF THE LAND SHOWN ON THIS PLAT DO HEREBY DEDICATE TO THE PUBLIC USE SURFACE RIGHTS FOR ALL STREETS AND DRAINAGE RIGHT OF WAY WITHIN THE BOUNDARY LINES OF SAID ADDITION, AS SHOWN ON THIS PLAT, SUBJECT, HOWEVER, TO AND EXCEPTING FROM THIS DEDICATION AND RESERVING UNTO THE UNION PACIFIC LAND RESOURCES CORPORATION, ITS SUCCESSORS AND ASSIGNS, FOREVER, ALL MINERALS AND ALL MINERAL RIGHTS OF EVERY KIND AND CHARACTER, NOW KNOWN TO EXIST OR HEREFTER TO BE DISCOVERED, INCLUDING, WITHOUT LIMITING THE GENERALITY OF THE FOREGOING, OIL AND GAS AND RIGHTS THERE TO, TOGETHER WITH THE SOLE, EXCLUSIVE AND PERPETUAL RIGHT TO EXPLORE FOR, REMOVE AND DISPOSE OF SAID MINERALS BY ANY MEANS OR METHODS SUITABLE TO UNION PACIFIC LAND RESOURCES CORPORATION, ITS SUCCESSORS AND ASSIGNS, BUT WITHOUT ENTERING UPON OR INTERFERING WITH THE SURFACE RIGHTS HEREBY RESERVED, AND IN SUCH MANNER AS NOT TO DAMAGE SAID SURFACE RIGHTS OR TO INTERFERE WITH THE USE THEREOF BY THE TOWN OF GREEN RIVER, WYOMING.

THAT THE UNDERSIGNED OWNERS OF THE LAND SHOWN ON THIS PLAT DO HEREBY DEDICATE TO THE PUBLIC USE THE AREA DESIGNATED FOR PARK PURPOSES WITHIN THE BOUNDARY LINES OF SAID ADDITION, AS SHOWN ON THIS PLAT, SUBJECT, HOWEVER, TO AND EXCEPTING FROM THIS DEDICATION AND RESERVING UNTO UNION PACIFIC LAND RESOURCES CORPORATION, ITS SUCCESSORS AND ASSIGNS, FOREVER, ALL MINERALS AND ALL MINERAL RIGHTS OF EVERY KIND AND CHARACTER, NOW KNOWN TO EXIST OR HEREFTER DISCOVERED, INCLUDING, WITHOUT LIMITING THE GENERALITY OF THE FOREGOING, COAL, OIL AND GAS

AND RIGHTS THERE TO, TOGETHER WITH THE SOLE, EXCLUSIVE AND PERPETUAL RIGHT TO EXPLORE FOR, REMOVE AND DISPOSE OF SAID MINERALS BY ANY MEANS OR METHODS SUITABLE TO UNION PACIFIC LAND RESOURCES CORPORATION, ITS SUCCESSORS AND ASSIGNS, INCLUDING THE RIGHT OF ACCESS TO, AND USE OF, SUCH PARTS OF SAID PARK AREAS, UPON OR BELOW THE SURFACE THEREOF, AS MAY BE NECESSARY FOR CONVEYANCE FOR ANY PURPOSE IN CONNECTION WITH EXPLORATION FOR, REMOVAL, STORAGE, DISPOSITION AND TRANSPORTATION OF SAID MINERALS AND THE DEPOSIT OF TAILINGS AND TOGETHER, ALSO WITH THE PERPETUAL RIGHT TO REMOVE THE SUBJECT SUPPORT FROM THE SURFACE OF SAID LANDS (EXCEPT SUCH AS IS NECESSARY FOR THE SUPPORT OF PERMANENT STRUCTURES ERECTED THEREON PRIOR TO THE TIME SUCH RIGHT IS EXERCISED) WITHOUT THEREBY INCURRING ANY LIABILITY WHATSOEVER, FOR DAMAGE SO CAUSED.

THAT THE UNDERSIGNED OWNERS OF THE LAND SHOWN ON THIS PLAT DO HEREBY DEDICATE TO THE PUBLIC USE THE AREA DESIGNATED "DEVELOPMENT AND PARK AREA" WITHIN THE BOUNDARY LINES OF SAID ADDITION, AS SHOWN ON THIS PLAT, SUBJECT, HOWEVER, TO AND EXCEPTING FROM THIS DEDICATION, AND RESERVING UNTO UNION PACIFIC LAND RESOURCES CORPORATION, ITS SUCCESSORS AND ASSIGNS, FOREVER, ALL MINERALS AND ALL MINERAL RIGHTS OF EVERY KIND AND CHARACTER, NOW KNOWN TO EXIST OR HEREFTER DISCOVERED, INCLUDING, WITHOUT LIMITING THE GENERALITY OF THE FOREGOING, OIL AND GAS AND RIGHTS THERE TO, TOGETHER WITH THE SOLE, EXCLUSIVE AND PERPETUAL RIGHT TO EXPLORE FOR, REMOVE AND DISPOSE OF SAID MINERALS BY ANY MEANS OR METHODS SUITABLE TO UNION PACIFIC LAND RESOURCES CORPORATION, ITS SUCCESSORS AND ASSIGNS, UNTO UNION PACIFIC LAND RESOURCES CORPORATION, ALSO RESERVES TO ITSELF, ITS SUCCESSORS AND ASSIGNS, THE PERPETUAL RIGHT TO ENTER UPON AND USE THAT CERTAIN SURFACE LOCATION IDENTIFIED ON THIS PLAT AS "DEVELOPMENT AND PARK AREA" FOR THE EXPLORATION FOR, REMOVAL AND DISPOSAL OF MINERALS HEREBY EXCEPTED AND HEREBY RESERVED, AND THE PERPETUAL RIGHT TO ENTER UPON SAID PURPOSES TO HAVE ANY BUILDINGS, OTHER STRUCTURES AND PROPERTY THEREON FOR THE DEVELOPMENT AND PARK AREA, WITHOUT ENTERING UPON OR INTERFERING WITH THE SURFACE RIGHTS HEREBY RESERVED TO UNION PACIFIC LAND RESOURCES CORPORATION, ITS SUCCESSORS AND ASSIGNS, THE TOWN OF GREEN RIVER, WYOMING, AND THE SAID DEVELOPMENT AND PARK AREA, SUBJECT ALWAYS TO THE SUPERIOR RIGHT OF WAY HEREBY RESERVED TO UNION PACIFIC LAND RESOURCES CORPORATION, ITS SUCCESSORS AND ASSIGNS.

IN WITNESS WHEREOF UNION PACIFIC LAND RESOURCES CORPORATION HAS CAUSED THIS CERTIFICATE TO BE SIGNED BY ITS PRESIDENT, SEALED WITH ITS CORPORATE SEAL AND BE ATTESTED BY ITS ASSISTANT SECRETARY THIS 15th DAY OF JULY, 1928, A.D. 1928.

UNION PACIFIC LAND RESOURCES CORPORATION

[Signature]
PRESIDENT
[Signature]
ASSISTANT SECRETARY

ATTEST:

STATE OF NEBRASKA
COUNTY OF DOUGLAS } SS

ON THIS 15th DAY OF JULY, 1928, BEFORE ME, A NOTARY PUBLIC, IN AND FOR SAID COUNTY IN THE STATE OF NEBRASKA, PERSONALLY APPEARED *[Signature]* TO ME PERSONALLY KNOWN AND TO ME PERSONALLY KNOWN TO BE THE *[Signature]* OF UNION PACIFIC LAND RESOURCES CORPORATION; AND TO BE THE SAME PERSON WHOSE NAME IS SUBSCRIBED TO THIS PLAT AND WHO BEING BY ME DULY SWORN, DID SAY THAT HE IS *[Signature]* OF UNION PACIFIC LAND RESOURCES CORPORATION, THAT THE SEAL AFFIXED TO SAID PLAT IS THE CORPORATE SEAL OF SAID CORPORATION; AND THAT SAID PLAT WAS SIGNED AND SEALED ON BEHALF OF SAID CORPORATION BY AUTHORITY OF ITS BOARD OF DIRECTORS, AND THE SAID *[Signature]* ACKNOWLEDGED SAID PLAT TO BE HIS FREE AND VOLUNTARY ACT AND DEED, AND THAT THE FREE AND VOLUNTARY ACT AND DEED OF SAID CORPORATION, IN WITNESS WHEREOF, I HAVE HERE UNTO SET MY HAND AND OFFICIAL SEAL THE DAY AND YEAR, LAST ABOVE WRITTEN.

MY COMMISSION EXPIRES SEPTEMBER 7, 1928

RESIDING AT DOUGLAS COUNTY

[Signature]
NOTARY PUBLIC



APPROVED BY THE MAYOR AND TOWN COUNCIL OF GREEN RIVER
MAYOR *[Signature]* DATE July 23, 1928
ATTEST: TOWN CLERK *[Signature]*

APPROVED BY THE PLANNING COMMISSION OF THE TOWN OF GREEN RIVER, WYOMING
CHAIRMAN *[Signature]* DATE July 23, 1928

ATTEST: SECRETARY *[Signature]*

CERTIFICATION

I, ROBERT C. SIKENHOLT, A REGISTERED LAND SURVEYOR IN THE STATE OF WYOMING CERTIFY THAT THE DIMENSIONS OF THE PLAT BOUNDARY, STREET AND EASEMENT RIGHT-OF-WAY AND LOT LINES CONTAINED HEREON IS ACCURATE TO 1 PART IN 5,000 AND WAS PREPARED UNDER MY DIRECTION.

[Signature]
L.S. REGISTRATION NO. 528, STATE OF WYOMING

STATE OF WYOMING
COUNTY OF SWEETWATER } SS
FILED FOR RECORD THIS 15th DAY OF DECEMBER 1928, AT 3:48 AM AND RECORDED AS PLAT NO. 452789
[Signature]
COUNTY CLERK AND EX-OFFICIO REGISTER OF DEEDS

AMENDED
FINAL FILING PLAT
DUTCH JOHN ADDITION

A SUBDIVISION IN THE TOWN OF GREEN RIVER

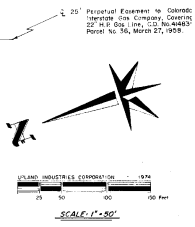
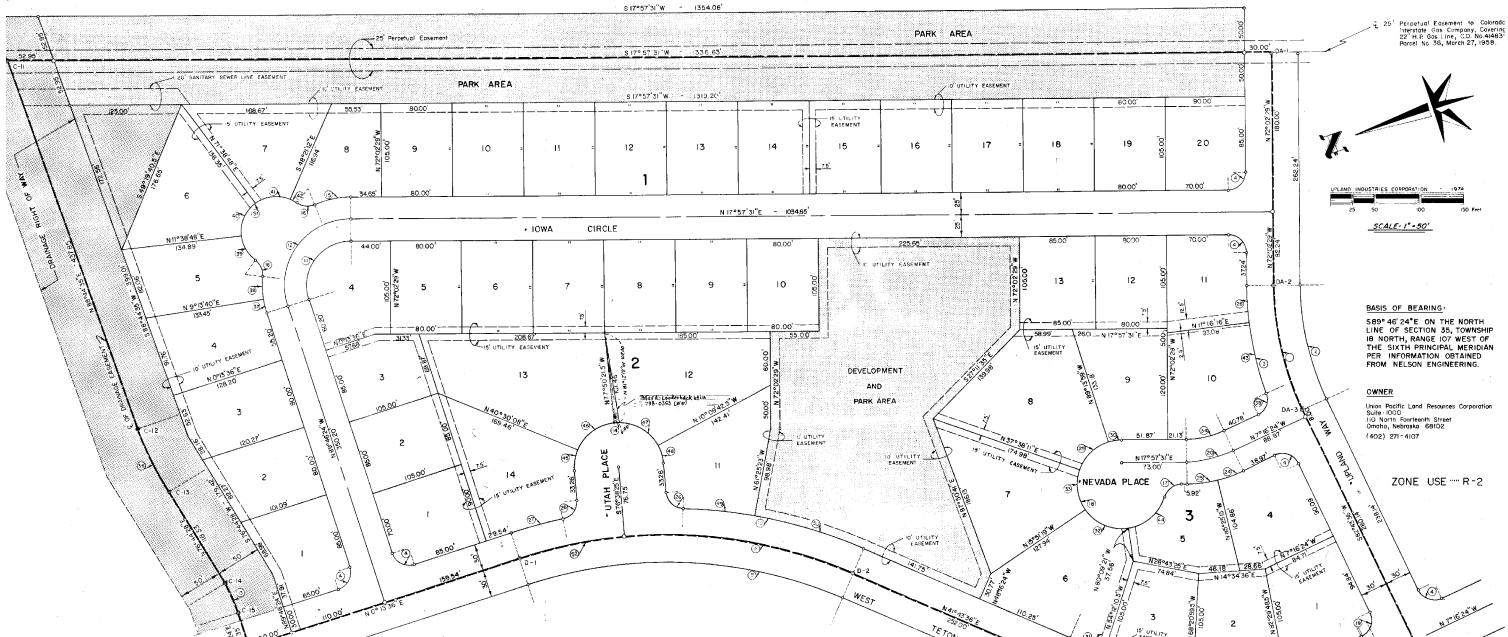
UPLAND INDUSTRIES

DATE SCALE DRAWN BY CHECKED BY OF
1928 1/4" = 1' RFW 2

AMENDED SEPT. 24, 1975 5-8-74
appears exactly as the same as the non amended plat

AMENDED DUTCH JOHN ADDITION

A SUBDIVISION IN THE TOWN OF GREEN RIVER, WYOMING



BASIS OF BEARINGS:
 S89°46'04"E ON THE NORTH
 LINE OF SECTION 35, TOWNSHIP
 10 NORTH, RANGE 107 WEST OF
 THE SIXTH PRINCIPAL MERIDIAN
 PER INFORMATION OBTAINED
 FROM NELSON ENGINEERING.

OWNER
 Upland Pacific Land Resources Corporation
 Suite 603
 10 North Fourteenth Street
 Omaha, Nebraska 68102
 (402) 571-4107

ZONE USE R-2

CURVE DATA

| No. | Delta | Radius | Tangent | Length | No. | Delta | Radius | Tangent | Length | No. | Delta | Radius | Tangent | Length |
|-----|-----------|--------|---------|----------|-----|-----------|--------|---------|---------|-----|-----------|--------|---------|---------|
| 1 | 89°13'58" | 355.00 | 74.8663 | 145.3200 | 21 | 89°40'00" | 20.00 | 18.4936 | 30.8938 | 42 | 89°50'00" | 40.00 | 25.0000 | 41.8879 |
| 2 | 89°13'58" | 355.00 | 74.8663 | 145.3200 | 22 | 89°40'00" | 20.00 | 18.4936 | 30.8938 | 43 | 89°50'00" | 40.00 | 25.0000 | 41.8879 |
| 3 | 89°13'58" | 355.00 | 74.8663 | 145.3200 | 23 | 89°40'00" | 20.00 | 18.4936 | 30.8938 | 44 | 89°50'00" | 40.00 | 25.0000 | 41.8879 |
| 4 | 89°13'58" | 355.00 | 74.8663 | 145.3200 | 24 | 89°40'00" | 20.00 | 18.4936 | 30.8938 | 45 | 89°50'00" | 40.00 | 25.0000 | 41.8879 |
| 5 | 89°13'58" | 355.00 | 74.8663 | 145.3200 | 25 | 89°40'00" | 20.00 | 18.4936 | 30.8938 | 46 | 89°50'00" | 40.00 | 25.0000 | 41.8879 |
| 6 | 89°13'58" | 355.00 | 74.8663 | 145.3200 | 26 | 89°40'00" | 20.00 | 18.4936 | 30.8938 | 47 | 89°50'00" | 40.00 | 25.0000 | 41.8879 |
| 7 | 89°13'58" | 355.00 | 74.8663 | 145.3200 | 27 | 89°40'00" | 20.00 | 18.4936 | 30.8938 | 48 | 89°50'00" | 40.00 | 25.0000 | 41.8879 |
| 8 | 89°13'58" | 355.00 | 74.8663 | 145.3200 | 28 | 89°40'00" | 20.00 | 18.4936 | 30.8938 | 49 | 89°50'00" | 40.00 | 25.0000 | 41.8879 |
| 9 | 89°13'58" | 355.00 | 74.8663 | 145.3200 | 29 | 89°40'00" | 20.00 | 18.4936 | 30.8938 | 50 | 89°50'00" | 40.00 | 25.0000 | 41.8879 |
| 10 | 89°13'58" | 355.00 | 74.8663 | 145.3200 | 30 | 89°40'00" | 20.00 | 18.4936 | 30.8938 | 51 | 89°50'00" | 40.00 | 25.0000 | 41.8879 |
| 11 | 89°13'58" | 355.00 | 74.8663 | 145.3200 | 31 | 89°40'00" | 20.00 | 18.4936 | 30.8938 | 52 | 89°50'00" | 40.00 | 25.0000 | 41.8879 |
| 12 | 89°13'58" | 355.00 | 74.8663 | 145.3200 | 32 | 89°40'00" | 20.00 | 18.4936 | 30.8938 | 53 | 89°50'00" | 40.00 | 25.0000 | 41.8879 |
| 13 | 89°13'58" | 355.00 | 74.8663 | 145.3200 | 33 | 89°40'00" | 20.00 | 18.4936 | 30.8938 | 54 | 89°50'00" | 40.00 | 25.0000 | 41.8879 |
| 14 | 89°13'58" | 355.00 | 74.8663 | 145.3200 | 34 | 89°40'00" | 20.00 | 18.4936 | 30.8938 | 55 | 89°50'00" | 40.00 | 25.0000 | 41.8879 |
| 15 | 89°13'58" | 355.00 | 74.8663 | 145.3200 | 35 | 89°40'00" | 20.00 | 18.4936 | 30.8938 | 56 | 89°50'00" | 40.00 | 25.0000 | 41.8879 |
| 16 | 89°13'58" | 355.00 | 74.8663 | 145.3200 | 36 | 89°40'00" | 20.00 | 18.4936 | 30.8938 | 57 | 89°50'00" | 40.00 | 25.0000 | 41.8879 |
| 17 | 89°13'58" | 355.00 | 74.8663 | 145.3200 | 37 | 89°40'00" | 20.00 | 18.4936 | 30.8938 | 58 | 89°50'00" | 40.00 | 25.0000 | 41.8879 |
| 18 | 89°13'58" | 355.00 | 74.8663 | 145.3200 | 38 | 89°40'00" | 20.00 | 18.4936 | 30.8938 | 59 | 89°50'00" | 40.00 | 25.0000 | 41.8879 |
| 19 | 89°13'58" | 355.00 | 74.8663 | 145.3200 | 39 | 89°40'00" | 20.00 | 18.4936 | 30.8938 | 60 | 89°50'00" | 40.00 | 25.0000 | 41.8879 |
| 20 | 89°13'58" | 355.00 | 74.8663 | 145.3200 | 40 | 89°40'00" | 20.00 | 18.4936 | 30.8938 | 61 | 89°50'00" | 40.00 | 25.0000 | 41.8879 |

LEGEND
 @ Survey Corner of Plat Boundary. Marker shall be a numbered brass cap set in a hole at least one inch in diameter, and extending not less below the cob, and containing ten pounds of iron.

RECORDED COPY 9/10/2010
 IN BOOK 1017 PAGE 192
 BY LAL

| | |
|--|-----------------------|
| AMENDED | |
| FINAL FILING PLAN | |
| DUTCH JOHN ADDITION | |
| A SUBDIVISION IN THE TOWN OF GREEN RIVER WYOMING | |
| UPLAND INDUSTRIES | SHEET 2 |
| OMAHA, NEBRASKA | OF 2 |
| DATE 5-18-74 | SCALE 1" = 50' |
| LAL | RFW |
| DRAWN BY | CHECKED BY |

N.W. Cor. Sec 35