

SPRINGLAND ADDITION

A SUBDIVISION IN THE CITY OF ROCK SPRINGS, WYOMING

KNOW ALL MEN BY THESE PRESENTS: THAT UNION PACIFIC LAND RESOURCES CORPORATION, A CORPORATION OF THE STATE OF UTAH, DOES HEREBY CERTIFY THAT THE FOREGOING PLAT OF SPRINGLAND ADDITION, A SUBDIVISION IN THE CITY OF ROCK SPRINGS, SHERIDAN COUNTY, WYOMING IS LOCATED IN THE NORTHWEST QUARTER OF SECTION 24, TOWNSHIP 19 NORTH, RANGE 108 WEST OF THE SIXTH PRINCIPAL MERIDIAN, SHERIDAN COUNTY, STATE OF WYOMING, AND IS MORE PARTICULARLY DESCRIBED AS FOLLOWS:

BEGINNING AT THE SOUTHWEST CORNER OF SAID SECTION 27; THENCE ALONG THE WEST LINE OF SAID SECTION NORTH 0 DEGREES 11 MINUTES 45 SECONDS EAST, A DISTANCE OF 1,160 FEET; THENCE AT RIGHT ANGLES TO THE LAST DESCRIBED LINE, SOUTH 80 DEGREES 48 MINUTES 17 SECONDS EAST, A DISTANCE OF 1,600 FEET;

THENCE NORTH 89 DEGREES 02 MINUTES 32 SECONDS EAST, A DISTANCE OF 104.84 FEET;

THENCE SOUTH 85 DEGREES 48 MINUTES 21 SECONDS EAST, A DISTANCE OF 520 FEET; TO THE NORTHWESTERLY RIGHT-OF-WAY LINE OF THAT CERTAIN PARCEL OF LAND CONVEYED BY THE UNION PACIFIC RAILROAD COMPANY TO STATE HIGHWAY COMMISSION OF WYOMING BY A QUITCLAIM DEED DATED AUGUST 13, 1964, AS PARCEL 15, IDENTIFIED IN THE RECORDS OF UNION PACIFIC RAILROAD COMPANY AS D. A. NO. 6446; THENCE ALONG THE NORTHWESTERLY RIGHT-OF-WAY LINE OF SAID QUITCLAIM PARCEL OF LAND, SOUTH 89 DEGREES 10 MINUTES 39 SECONDS WEST, A DISTANCE OF 2,826.57 FEET, MORE OR LESS; TO THE BEGINNING OF A TANGENT CURVE, CONVEX NORTHWESTERLY HAVING A RADIUS OF 8,509.50 FEET;

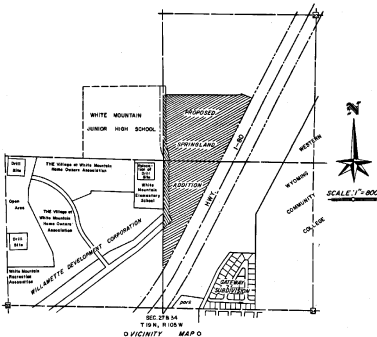
THENCE SOUTHWESTERLY ALONG SAID CURVE, THROUGH A CENTRAL ANGLE OF 7 DEGREES 08 MINUTES 02 SECONDS AN ARC DISTANCE OF 879.77 FEET, MORE OR LESS; TO THE WEST LINE OF SAID SECTION 34; THENCE ALONG SAID WEST LINE, NORTH 00 DEGREES 02 MINUTES 10 SECONDS EAST, A DISTANCE OF 2,019.26 FEET, MORE OR LESS, TO THE POINT OF BEGINNING;

CONTAINING AN AREA OF 59.98 ACRES, MORE OR LESS.

THAT SAID ADDITION, AS IT APPEARS ON THIS PLAT, IS MADE WITH THE FREE CONSENT AND IN ACCORD WITH THE DESIRES OF THE UNDERGROUND OWNER AND PROPRIETOR, UNION PACIFIC LAND RESOURCES CORPORATION, THAT THE FOREGOING IS A CORRECT PLAT OF SAID ADDITION AS DIVIDED INTO LOTS, BLOCKS, STREETS, TRAILS, PUBLIC RECREATION AREA, PRIVATE RECREATION AREA, PEDESTRIAN WALKWAY AREA, UTILITY EASEMENTS, AND DRAINAGE AND UTILITY EASEMENTS, AND THAT THE DIMENSIONS THEREOF ARE CORRECTLY SHOWN BY DIMENSIONS REPRESENTING FEET AND DECIMALS OF A FOOT, AND THE COURSES OF THE LOTS, BLOCKS, STREETS, TRAILS, PUBLIC RECREATION AREA, PRIVATE RECREATION AREA, PEDESTRIAN WALKWAY AREA, UTILITY EASEMENTS, AND DRAINAGE AND UTILITY EASEMENTS ARE CORRECTLY SHOWN HEREON.

THAT UNION PACIFIC LAND RESOURCES CORPORATION, AS THE SOLE OWNER OF THE LAND SHOWN ON THIS PLAT, DOES HEREBY DEDICATE TO THE PUBLIC USE ALL STREETS, PUBLIC RECREATION AREA, PEDESTRIAN WALKWAY AREA, UTILITY EASEMENTS AND DRAINAGE AND UTILITY EASEMENTS WITHIN THE BOUNDARY LINES OF SAID ADDITION AS SHOWN ON THIS PLAT.

EXCEPT FROM THIS DEDICATION AND RESERVING TO THE GRANTOR, ITS SUCCESSORS AND ASSIGNS, FOREVER, ALL MINERALS AND ALL MINING RIGHTS OF EVERY KIND AND CHARACTER NOW KNOWN TO EXIST OR HEREAFTER DISCOVERED, INCLUDING, WITHOUT LIMITING THE GENERALITY OF THE FOREGOING, OIL AND GAS AND RIGHTS THEREIN, TOGETHER WITH THE SEED, EXCLUSIVE AND PERPETUAL, RIGHT TO EXPLORE FOR, REMOVE AND DIVIDE OF SAID MINERALS BY ANY MEANS OR METHODS SUITABLE TO THE GRANTOR, ITS SUCCESSORS AND ASSIGNS, BUT WITHOUT ENTERING INTO OR LEASING THE HEREBY DEDICATED FOR STREETS, PUBLIC RECREATION AREA, PEDESTRIAN WALKWAY AREA, UTILITY EASEMENTS, AND DRAINAGE AND UTILITY EASEMENTS, IN SUCH MANNER AS NOT TO CHANGE THE SURFACE OF SAID LANDS OR TO INTERFERE WITH THE USE THEREOF BY THE PUBLIC.



APPROVED BY PLANNING COMMISSION OF ROCK SPRINGS, WYOMING

J.R. Price
CHAIRMAN
Tommy Smith
ATTEST: SECRETARY
April 15, 1975
DATE

APPROVED BY THE MAYOR AND CITY COUNCIL OF ROCK SPRINGS, WYOMING

W. H. White
MAYOR
John J. ...
ATTEST: CITY CLERK
April 15, 1975
DATE

CERTIFICATION

I, ROBERT C. SHENKOLT, OF OMAHA, NEBRASKA HEREBY CERTIFY THAT THIS PLAT WAS PREPARED UNDER MY DIRECTION AND SUPERVISION BY THOMAS L. KOLA FOR PAGES WORK, I STAND PERSONALLY RESPONSIBLE; AND THAT THE DIMENSIONS OF THE PLAT BOUNDARY AND THE LINES DETERMINE THE LOTS, BLOCKS, STREETS, TRAILS, PUBLIC AND PRIVATE RECREATION AREAS, UTILITY AND DRAINAGE EASEMENTS CONTAINED HERE ON ARE ACCURATE TO 1 PART IN 5,000.

Robert C. Shenkolt
L.S. REGISTRATION NO. 528, STATE OF WYOMING

STATE OF NEBRASKA }
COUNTY OF DOUGLAS } SS

THE FOREGOING INSTRUMENT WAS ACKNOWLEDGED BEFORE ME BY ROBERT C. SHENKOLT THIS 17TH DAY OF MARCH, 1975, BY MYSELF BY HIS HAND AND OFFICIAL SEAL.

MY COMMISSION EXPIRES SEPT. 7, 1978
RESIDING AT DOUGLAS COUNTY, NEBRASKA

D. W. ...
NOTARY PUBLIC

STATE OF WYOMING
COUNTY OF SHERIDAN
FILED FOR RECORD THIS 11th DAY OF April, 1975 at
2:30 PM AND RECORDED AS PLAT NO. 119

David B. ...
COUNTY CLERK AND EX-OFFICIO REGISTER OF DEEDS
480708

THAT THE DEDICATION OF THE STREETS, PUBLIC RECREATION AREA, PEDESTRIAN WALKWAY AREA, UTILITY EASEMENTS, AND DRAINAGE AND UTILITY EASEMENTS SHOWN ON THIS PLAT IS MADE SUBJECT TO ANY AND ALL EXISTING EASEMENTS OR RIGHTS OF WAY, INCLUDING ANY AND ALL EXISTING EASEMENTS SHOWN ON THIS PLAT.

IN WITNESS WHEREOF UNION PACIFIC LAND RESOURCES CORPORATION HAS CAUSED THIS CERTIFICATE TO BE SIGNED BY ITS PRESIDENT, SEALED WITH ITS CORPORATE SEAL AND BE TESTIFIED BY ITS ASSISTANT SECRETARY THIS 17th DAY OF MARCH, A.D., 1975.

UNION PACIFIC LAND RESOURCES CORPORATION

[Signature]
PRESIDENT

[Signature]
ASSISTANT SECRETARY

STATE OF NEBRASKA }
COUNTY OF DOUGLAS } SS

ON THIS 17th DAY OF MARCH, 1975, BEFORE ME, A NOTARY PUBLIC IN AND FOR SAID COUNTY IN THE STATE AFORESAID, PERSONALLY APPEARED JURISDICTORILY TO ME, PERSONALLY KNOWN, AND WHO IS PERSONALLY KNOWN TO BE THE PRESIDENT, OF UNION PACIFIC LAND RESOURCES CORPORATION, AND TO BE THE SAME PERSON WHOSE NAME IS SUBSCRIBED TO THIS PLAT, AND WHO, BEING BY ME DULY SHOWN, DID SAY THAT HE IS PRESIDENT OF UNION PACIFIC LAND RESOURCES CORPORATION, THAT THE SEAL AFFIXED TO SAID PLAT IS THE CORPORATE SEAL OF SAID CORPORATION, AND THAT SAID PLAT WAS SIGNED AND SEALED ON BEHALF OF SAID CORPORATION BY AUTHORITY OF ITS BOARD OF DIRECTORS, AND SAID HE HEREBY ACKNOWLEDGES SAID PLAT TO BE HIS FREE AND VOLUNTARY ACT AND DEED, AND THE FREE AND VOLUNTARY ACT AND DEED OF SAID CORPORATION.

IN WITNESS WHEREOF, I HAVE HEREUNTO SET MY HAND AND OFFICIAL SEAL THE DAY AND YEAR LAST ABOVE WRITTEN.
MY COMMISSION EXPIRES SEPT. 7, 1978
RESIDING AT DOUGLAS COUNTY, NEBRASKA

D. W. ...
NOTARY PUBLIC

Partially Vacated
Private Rec. Area - By Plat 269
Recorded 9/15/81
Tract "B" - By Plat 276
Recorded 1/29/82

Kent Felderman (mar)
County Surveyor
6/29/93



FINAL

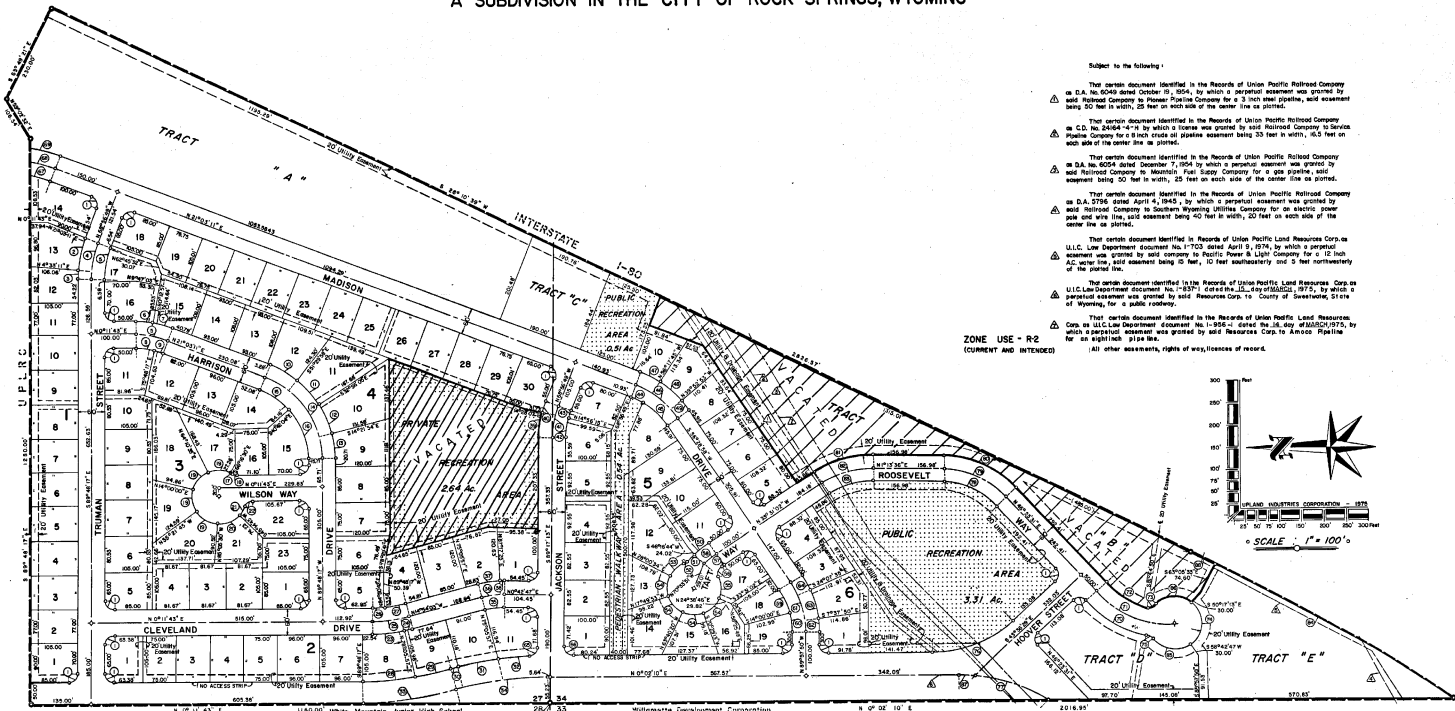
FILING PLAT

SPRINGLAND ADDITION
A SUBDIVISION IN THE CITY OF
ROCK SPRINGS, WYOMING

	UPLAND INDUSTRIES 1000 N. ... SHERIDAN, WYOMING	SHEET: 1 OF: 2
	DATE: 3-17-75 SCALE: 1"=100' DRAWN BY: JEC CHECKED BY: RFW	2

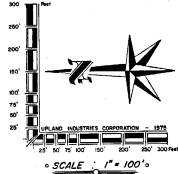
SPRINGLAND ADDITION

A SUBDIVISION IN THE CITY OF ROCK SPRINGS, WYOMING



ZONE USE - R-2
(CURRENT AND INTENDED)

- Subject to the following:
- ⓐ The certain document identified in the Records of Union Pacific Railroad Company as D.A. No. 6288 dated October 19, 1954, by which a perpetual easement was granted by said Railroad Company to Pioneer Paving Company for a 3 1/2 inch asphalt, water easement being 50 feet in width, 25 feet on each side of the center line on each side of the center line as planned.
 - ⓑ The certain document identified in the Records of Union Pacific Railroad Company as C.O. No. 2454-4-4 in which a license was granted to said Railroad Company to Service Paving Company for a 6 inch cross slot plastic easement being 50 feet in width, 25 feet on each side of the center line as planned.
 - ⓒ The certain document identified in the Records of Union Pacific Railroad Company as D.A. No. 6254 dated December 19, 1954 by which a perpetual easement was granted by said Railroad Company to Mountain Fuel Supply Company for a gas pipeline, water easement being 50 feet in width, 25 feet on each side of the center line as planned.
 - ⓓ The certain document identified in the Records of Union Pacific Railroad Company as D.A. 2786 dated April 4, 1949, by which a perpetual easement was granted by said Railroad Company to Southern Wyoming Utilities Company for an electric power pole and wire line, said easement being 50 feet in width, 25 feet on each side of the center line as planned.
 - ⓔ The certain document identified in the Records of Union Pacific Railroad Company as U.L.C. Law Department document No. 17703 dated April 5, 1974, by which a perpetual easement was granted by said company to Pacific Power & Light Company for a 12 inch AC water fuel easement being 50 feet, 10 feet easementary and 2 feet easementary of the point line.
 - ⓕ The certain document identified in the Records of Union Pacific Railroad Company as U.L.C. Law Department document No. 18371 dated June 22, 1975, by which a perpetual easement was granted by said Resources Corp. to County of Sweetwater, State of Wyoming, for a public roadway.
 - ⓖ The certain document identified in the Records of Union Pacific Railroad Company, Corp. as U.L.C. Law Department document No. 19566 dated June 26, 1975, by which a perpetual easement was granted by said Resources Corp. to Kinross Pipeline for an eight-inch pipe line.
- All other easements, rights of way, licenses or record.



CURVE NO.	1	2	3	4	5	6	7	8	9	10	11	12	13	14	15	16	17	18	19	20	21	22
RADIUS	3000'	2800'	2600'	2300'	2000'	2000'	2300'	2300'	1700'	1700'	2300'	2300'	2300'	2300'	2300'	2300'	2300'	2300'	2300'	2300'	2300'	2300'
DELTA	90°00'	90°00'	90°00'	90°00'	90°00'	90°00'	90°00'	90°00'	90°00'	90°00'	90°00'	90°00'	90°00'	90°00'	90°00'	90°00'	90°00'	90°00'	90°00'	90°00'	90°00'	90°00'
LENGTH	36.42'	37.86'	39.29'	40.72'	42.15'	43.58'	45.01'	46.44'	47.87'	49.30'	50.73'	52.16'	53.59'	55.02'	56.45'	57.88'	59.31'	60.74'	62.17'	63.60'	65.03'	66.46'
TANGENT	20.00'	37.86'	55.72'	73.58'	91.44'	109.30'	127.16'	145.02'	162.88'	180.74'	198.60'	216.46'	234.32'	252.18'	270.04'	287.90'	305.76'	323.62'	341.48'	359.34'	377.20'	395.06'
CHORD	38.28'	74.52'	110.76'	147.00'	183.24'	219.48'	255.72'	291.96'	328.20'	364.44'	400.68'	436.92'	473.16'	509.40'	545.64'	581.88'	618.12'	654.36'	690.60'	726.84'	763.08'	799.32'

CURVE NO.	23	24	25	26	27	28	29	30	31	32	33	34	35	36	37	38	39	40	41	42	43	44
RADIUS	3000'	3300'	3600'	3900'	4200'	4500'	4800'	5100'	5400'	5700'	6000'	6300'	6600'	6900'	7200'	7500'	7800'	8100'	8400'	8700'	9000'	9300'
DELTA	90°00'	90°00'	90°00'	90°00'	90°00'	90°00'	90°00'	90°00'	90°00'	90°00'	90°00'	90°00'	90°00'	90°00'	90°00'	90°00'	90°00'	90°00'	90°00'	90°00'	90°00'	90°00'
LENGTH	49.67'	57.80'	65.93'	74.06'	82.19'	90.32'	98.45'	106.58'	114.71'	122.84'	130.97'	139.10'	147.23'	155.36'	163.49'	171.62'	179.75'	187.88'	196.01'	204.14'	212.27'	220.40'
TANGENT	54.59'	64.31'	74.03'	83.75'	93.47'	103.19'	112.91'	122.63'	132.35'	142.07'	151.79'	161.51'	171.23'	180.95'	190.67'	200.39'	210.11'	219.83'	229.55'	239.27'	248.99'	258.71'
CHORD	58.36'	70.52'	82.68'	94.84'	106.99'	119.15'	131.31'	143.47'	155.63'	167.79'	179.95'	192.11'	204.27'	216.43'	228.59'	240.75'	252.91'	265.07'	277.23'	289.39'	301.55'	313.71'

CURVE NO.	45	46	47	48	49	50	51	52	53	54	55	56	57	58	59	60	61	62	63	64	65	66
RADIUS	1700'	2000'	2300'	2600'	2900'	3200'	3500'	3800'	4100'	4400'	4700'	5000'	5300'	5600'	5900'	6200'	6500'	6800'	7100'	7400'	7700'	8000'
DELTA	120°00'	120°00'	120°00'	120°00'	120°00'	120°00'	120°00'	120°00'	120°00'	120°00'	120°00'	120°00'	120°00'	120°00'	120°00'	120°00'	120°00'	120°00'	120°00'	120°00'	120°00'	120°00'
LENGTH	13.87'	15.87'	17.87'	19.87'	21.87'	23.87'	25.87'	27.87'	29.87'	31.87'	33.87'	35.87'	37.87'	39.87'	41.87'	43.87'	45.87'	47.87'	49.87'	51.87'	53.87'	55.87'
TANGENT	36.36'	42.42'	48.48'	54.54'	60.60'	66.66'	72.72'	78.78'	84.84'	90.90'	96.96'	103.02'	109.08'	115.14'	121.20'	127.26'	133.32'	139.38'	145.44'	151.50'	157.56'	163.62'
CHORD	36.36'	42.42'	48.48'	54.54'	60.60'	66.66'	72.72'	78.78'	84.84'	90.90'	96.96'	103.02'	109.08'	115.14'	121.20'	127.26'	133.32'	139.38'	145.44'	151.50'	157.56'	163.62'

CURVE NO.	67	68	69	70	71	72	73	74	75	76	77	78	79	80	81	82	83	84	85	86	87	88
RADIUS	2700'	3000'	3300'	3600'	3900'	4200'	4500'	4800'	5100'	5400'	5700'	6000'	6300'	6600'	6900'	7200'	7500'	7800'	8100'	8400'	8700'	9000'
DELTA	90°00'	90°00'	90°00'	90°00'	90°00'	90°00'	90°00'	90°00'	90°00'	90°00'	90°00'	90°00'	90°00'	90°00'	90°00'	90°00'	90°00'	90°00'	90°00'	90°00'	90°00'	90°00'
LENGTH	49.75'	56.36'	62.97'	69.58'	76.19'	82.80'	89.41'	96.02'	102.63'	109.24'	115.85'	122.46'	129.07'	135.68'	142.29'	148.90'	155.51'	162.12'	168.73'	175.34'	181.95'	188.56'
TANGENT	54.59'	64.31'	74.03'	83.75'	93.47'	103.19'	112.91'	122.63'	132.35'	142.07'	151.79'	161.51'	171.23'	180.95'	190.67'	200.39'	210.11'	219.83'	229.55'	239.27'	248.99'	258.71'
CHORD	65.88'	78.04'	90.20'	102.36'	114.52'	126.68'	138.84'	150.99'	163.15'	175.31'	187.47'	199.63'	211.79'	223.95'	236.11'	248.27'	260.43'	272.59'	284.75'	296.91'	309.07'	321.23'

4004, 1982, 10-26-82
 197
 450708

FINAL FILING PLAT

SPRINGLAND ADDITION
A SUBDIVISION IN THE CITY OF
ROCK SPRINGS, WYOMING

DATE: 10/26/82 BY: JEC/RFW
 3-17-78 P. 100' JEC RFW