

DUTCH JOHN ADDITION

A SUBDIVISION IN THE TOWN OF GREEN RIVER, WYOMING

A PART OF NW 1/4 OF SECTION 35, T18N., R.107 W. OF THE 6th PM.

KNOW ALL MEN BY THESE PRESENTS: THAT THE UNDERSIGNED UNION PACIFIC LAND RESOURCES CORPORATION, A CORPORATION OF THE STATE OF UTAH, BEING THE OWNER OF THE LAND SHOWN ON THIS PLAT, DOES HEREBY CERTIFY THAT THE FOREGOING PLAT OF THE DUTCH JOHN ADDITION, A SUBDIVISION IN THE TOWN OF GREEN RIVER, COUNTY OF SWEETWATER, STATE OF WYOMING, IS SITUATE IN THE NORTHWEST QUARTER (NW 1/4) OF SECTION 35, RESERVE TOWNSHIP 18 NORTH, RANGE 107 WEST OF THE SIXTH PRINCIPAL MERIDIAN, SWEETWATER COUNTY, WYOMING, BOUNDED AND DESCRIBED AS FOLLOWS

COMMENCING AT THE NORTHWEST CORNER OF SAID SECTION 35:

THENCE ALONG THE NORTH LINE OF SAID SECTION 35, S89°46'24"E A DISTANCE OF 1340.00 FEET;

THENCE S 0°13'36" W, A DISTANCE OF 765.46 FEET TO THE TRUE POINT OF BEGINNING;

THENCE S 89°46'24" E, A DISTANCE OF 39.35 FEET TO THE BEGINNING OF A TANGENT CURVE CONCAVE NORTHERLY HAVING A RADIUS OF 200.00 FEET;

THENCE EASTERLY ALONG SAID CURVE, THROUGH A CENTRAL ANGLE OF 13°29'08" AN ARC DISTANCE OF 47.07 FEET;

THENCE TANGENT TO THE LAST DESCRIBED CURVE N 76°44'28" E, A DISTANCE OF 118.33 FEET TO THE BEGINNING OF A TANGENT CURVE CONCAVE SOUTHEASTERLY HAVING A RADIUS OF 350.00 FEET;

THENCE NORTHEASTERLY ALONG SAID CURVE, THROUGH A CENTRAL ANGLE OF 12°00'07" AN ARC DISTANCE OF 73.32 FEET;

THENCE TANGENT TO THE LAST DESCRIBED CURVE N 88°44'35" E A DISTANCE OF 437.85 FEET;

THENCE S 17°57'31" W, A DISTANCE OF 1419.58 FEET;

THENCE N 72°02'29" W, A DISTANCE OF 262.24 FEET TO THE BEGINNING OF A TANGENT CURVE CONCAVE SOUTHERLY HAVING A RADIUS OF 330.00 FEET;

THENCE WESTERLY ALONG SAID CURVE THROUGH A CENTRAL ANGLE OF 25°13'55" AN ARC DISTANCE OF 145.33 FEET;

THENCE TANGENT TO THE LAST DESCRIBED CURVE S 82°43'36" W A DISTANCE OF 288.14 FEET;

THENCE N 7°16'24" W, A DISTANCE OF 37.22 FEET TO THE BEGINNING OF A TANGENT CURVE CONCAVE SOUTHEASTERLY HAVING A RADIUS OF 459.86 FEET;

THENCE NORTHEASTERLY ALONG SAID CURVE, THROUGH A CENTRAL ANGLE OF 49°00'00" AN ARC DISTANCE OF 375.32 FEET;

THENCE TANGENT TO THE LAST DESCRIBED CURVE, N 41°43'36" E, A DISTANCE OF 252.00 FEET TO THE BEGINNING OF A TANGENT CURVE CONCAVE WESTERLY HAVING A RADIUS OF 527.89 FEET;

THENCE NORTHERLY ALONG SAID CURVE, THROUGH A CENTRAL ANGLE OF 41°30'00" AN ARC DISTANCE OF 382.36 FEET;

THENCE TANGENT TO THE LAST DESCRIBED CURVE, N 0°13'36" E A DISTANCE OF 319.54 FEET TO THE TRUE POINT OF BEGINNING.

CONTAINING AN AREA OF 19.21 ACRES, MORE OR LESS.

THAT SAID ADDITION, AS IT APPEARS ON THIS PLAT, IS MADE WITH THE FREE CONSENT AND IN ACCORD WITH THE DESIRES OF THE UNDERSIGNED OWNERS THEREOF THAT THE PLAT OF SAID ADDITION, AS DIVIDED INTO LOTS, BLOCKS AND STREETS, SHOWS THE DIMENSIONS THEREOF CORRECTLY BY FIGURES REPRESENTING FEET AND DECIMALS OF A FOOT, AND THE COURSES OF THE LOTS, BLOCKS AND STREETS ARE CORRECTLY SHOWN THEREON.

THAT THE UNDERSIGNED OWNERS OF THE LAND SHOWN ON THIS PLAT DO HEREBY DEDICATE TO THE PUBLIC USE SURFACE RIGHTS FOR ALL STREETS AND DRAINAGE RIGHT OF WAY WITHIN THE BOUNDARY LINES OF SAID ADDITION, AS SHOWN ON THIS PLAT, SUBJECT, HOWEVER, TO, AND EXCEPTING FROM THIS DEDICATION AND RESERVING UNTO THE UNION PACIFIC LAND RESOURCES CORPORATION, ITS SUCCESSORS AND ASSIGNS, FOREVER, ALL MINERALS AND ALL MINERAL RIGHTS OF EVERY KIND AND CHARACTER NOW KNOWN TO EXIST OR HEREAFTER DISCOVERED, INCLUDING, WITHOUT LIMITING THE GENERALITY OF THE FOREGOING, OIL AND GAS AND RIGHTS THEREOF, TO EXIST OR HEREAFTER DISCOVERED, AND THE DEPOSIT OF TAILINGS AND TOGETHER ALSO WITH THE PERPETUAL RIGHT TO EXPLORE FOR, REMOVE AND DISPOSE OF, SAID MINERALS BY ANY MEANS OR METHODS SUITABLE TO UNION PACIFIC LAND RESOURCES CORPORATION, ITS SUCCESSORS AND ASSIGNS, BUT WITHOUT ENTERING UPON OR INTERFERING WITH THE USE THEREOF BY THE TOWN OF GREEN RIVER, WYOMING.

THAT THE UNDERSIGNED OWNERS OF THE LAND SHOWN ON THIS PLAT DO HEREBY DEDICATE TO THE PUBLIC USE THE AREA DESIGNATED FOR PARK PURPOSES WITHIN THE BOUNDARY LINES OF SAID ADDITION, AS SHOWN ON THIS PLAT, SUBJECT, HOWEVER, TO, AND EXCEPTING FROM THIS DEDICATION AND RESERVING UNTO UNION PACIFIC LAND RESOURCES CORPORATION, ITS UNION PACIFIC LAND RESOURCES CORPORATION, ITS SUCCESSORS AND ASSIGNS, FOREVER, ALL MINERALS AND ALL MINERAL RIGHTS OF EVERY KIND AND CHARACTER NOW KNOWN TO EXIST OR HEREAFTER DISCOVERED, INCLUDING, WITHOUT LIMITING THE GENERALITY OF THE FOREGOING, COAL, OIL AND GAS

AND RIGHTS THERE TO, TOGETHER WITH THE SOLE, EXCLUSIVE AND PERPETUAL RIGHT TO EXPLORE FOR, REMOVE AND DISPOSE OF SAID MINERALS BY ANY MEANS OR METHODS SUITABLE TO UNION PACIFIC LAND RESOURCES CORPORATION, ITS SUCCESSORS AND ASSIGNS, INCLUDING THE RIGHT OF ACCESS TO, AND USE OF SUCH PARTS OF SAID PARK AREAS, UPON OR BELOW THE SURFACE THEREOF, AS MAY BE NECESSARY FOR THE PURPOSES OF ANY PURPOSE IN CONNECTION WITH EXPLORATION FOR, REMOVAL, STORAGE, DEPOSITION AND DISPOSAL OF TAILINGS AND TOGETHER ALSO WITH THE PERPETUAL RIGHT TO REMOVE THE SUBSURFACE SUPPORT STRUCTURES FOR THE SUPPORT OF PERMANENT STRUCTURES ERECTED THEREON PRIOR TO THE TIME SUCH RIGHT IS EXERCISED) WITHOUT THEREBY INCURRING ANY LIABILITY WHATSOEVER FOR DAMAGE SO CAUSED.

THAT THE UNDERSIGNED OWNERS OF THE LAND SHOWN ON THIS PLAT DO HEREBY DEDICATE TO THE PUBLIC USE THE AREA DESIGNATED "DEVELOPMENT AND PARK AREA" WITHIN THE BOUNDARY LINES OF SAID ADDITION, AS SHOWN ON THIS PLAT, SUBJECT, HOWEVER, TO, AND EXCEPTING FROM THIS DEDICATION AND RESERVING UNTO UNION PACIFIC LAND RESOURCES CORPORATION, ITS SUCCESSORS AND ASSIGNS, FOREVER, ALL MINERALS AND ALL MINERAL RIGHTS OF EVERY KIND AND CHARACTER NOW KNOWN TO EXIST OR HEREAFTER DISCOVERED, INCLUDING, WITHOUT LIMITING THE GENERALITY OF THE FOREGOING, OIL AND GAS AND RIGHTS THEREOF, TO EXIST OR HEREAFTER DISCOVERED, AND THE DEPOSIT OF TAILINGS AND TOGETHER ALSO WITH THE PERPETUAL RIGHT TO EXPLORE FOR, REMOVE AND DISPOSE OF, SAID MINERALS BY ANY MEANS OR METHODS SUITABLE TO UNION PACIFIC LAND RESOURCES CORPORATION, ITS SUCCESSORS AND ASSIGNS, UNION PACIFIC LAND RESOURCES CORPORATION ALSO RESERVES TO ITSELF ITS SUCCESSORS AND ASSIGNS, THE PERPETUAL RIGHT TO ENTER UPON AND USE THAT CERTAIN SURFACE LOCATION IDENTIFIED ON THIS PLAT AS "DEVELOPMENT AND PARK AREA" FOR THE EXPLORATION FOR, REMOVAL AND DISPOSAL OF MINERALS HEREBY EXCEPTED AND RESERVED AND PURPOSES TO HAVE ANY BUILDINGS, OTHER STRUCTURES AND PROPERTY REMOVED AND RELOCATED AND TO TAKE ANY OTHER ACTION WITHIN THE BOUNDARY LINES OF SAID DEVELOPMENT AND PARK AREA, WITHOUT ENTERING UPON OR INTERFERING WITH THE USE THEREOF BY THE TOWN OF GREEN RIVER, WYOMING, ITS SUCCESSORS AND ASSIGNS. THE TOWN OF GREEN RIVER, WYOMING, MAY USE THE SAID DEVELOPMENT AND PARK AREA, SUBJECT ALTHOUGH TO THE SURFACE RIGHTS HEREBY DEDICATED, AND IN SUCH MANNER AS NOT TO DAMAGE SAID SURFACE RIGHTS OR TO INTERFERE WITH THE USE THEREOF BY THE TOWN OF GREEN RIVER, WYOMING.

IN WITNESS WHEREOF UNION PACIFIC LAND RESOURCES CORPORATION HAS CAUSED THIS CERTIFICATE TO BE SIGNED BY ITS PRESIDENT, SEALED WITH ITS CORPORATE SEAL, AND BE ATTESTED BY ITS ASSISTANT SECRETARY THIS 19th DAY OF _____, 1974.

UNION PACIFIC LAND RESOURCES CORPORATION

[Signature]
PRESIDENT

[Signature]
ATTST: ASSISTANT SECRETARY

VACATED BY PLAT 192
RECORDED ON 10/9/75



CLERKMAN
SURVEYOR
6/1/76

STATE OF WYOMING
COUNTY OF SWEETWATER } SS

FILED FOR RECORD THIS 14th DAY OF *October*
1974, AND RECORDED AS PLAT
NO. *192*

[Signature]
COUNTY CLERK AND EX-OFFICIO REGISTER OF DEEDS

STATE OF NEBRASKA }
COUNTY OF DOUGLAS } SS

ON THIS 10th DAY OF JULY, 1974, BEFORE ME, A NOTARY PUBLIC, IN AND FOR SAID COUNTY IN THE STATE OF NEBRASKA, PERSONALLY APPEARED J.W. SHERIDAN, TO ME PERSONALLY KNOWN AND TO ME PERSONALLY KNOWN TO BE THE PRESIDENT OF UNION PACIFIC LAND RESOURCES CORPORATION, AND TO BE THE SAME PERSON WHOSE NAME IS SUBSCRIBED TO THIS PLAT, AND WHO, BEING BY ME DULY SWORN, ADVISED THAT HE IS THE DIRECTOR OF UNION PACIFIC LAND RESOURCES CORPORATION, THAT THE SEAL AFFIXED TO SAID PLAT IS THE CORPORATE SEAL OF SAID CORPORATION BY AUTHORITY OF ITS BOARD OF DIRECTORS, AND THAT SAID PLAT WAS SIGNED AND SEALED ON BEHALF OF SAID CORPORATION BY AUTHORITY OF ITS BOARD OF DIRECTORS, AND THE SAID J.W. SHERIDAN ACKNOWLEDGED SAID PLAT TO BE HIS FREE AND VOLUNTARY ACT AND DEED OF SAID CORPORATION, IN WITNESS WHEREOF, I HAVE HERE UNTO SET MY HAND AND OFFICIAL SEAL, THE DAY AND YEAR LAST ABOVE WRITTEN.

MY COMMISSION EXPIRES SEPTEMBER 7, 1978

DOUGLAS COUNTY

[Signature]
NOTARY PUBLIC



APPROVED BY THE MAYOR AND TOWN COUNCIL OF GREEN RIVER.

MAYOR *[Signature]* DATE July 23, 1974

ATTEST: TOWN CLERK *[Signature]*

APPROVED BY THE PLANNING COMMISSION OF THE TOWN OF GREEN RIVER, WYOMING.

CHAIRMAN *[Signature]* DATE July 22, 1974

ATTEST: SECRETARY *[Signature]*

CERTIFICATION

I, ROBERT C. SWEENHOLT, A REGISTERED LAND SURVEYOR IN THE STATE OF WYOMING, CERTIFY THAT THE DIMENSIONS OF THE PLAT BOUNDARY, STREET AND EASEMENT RIGHT-OF-WAY AND LOT LINES CONTAINED HEREIN IS ACCURATE TO 1 PART IN 8,000 AND WAS PREPARED UNDER MY DIRECTION.

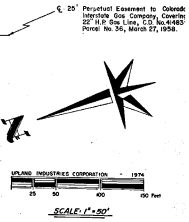
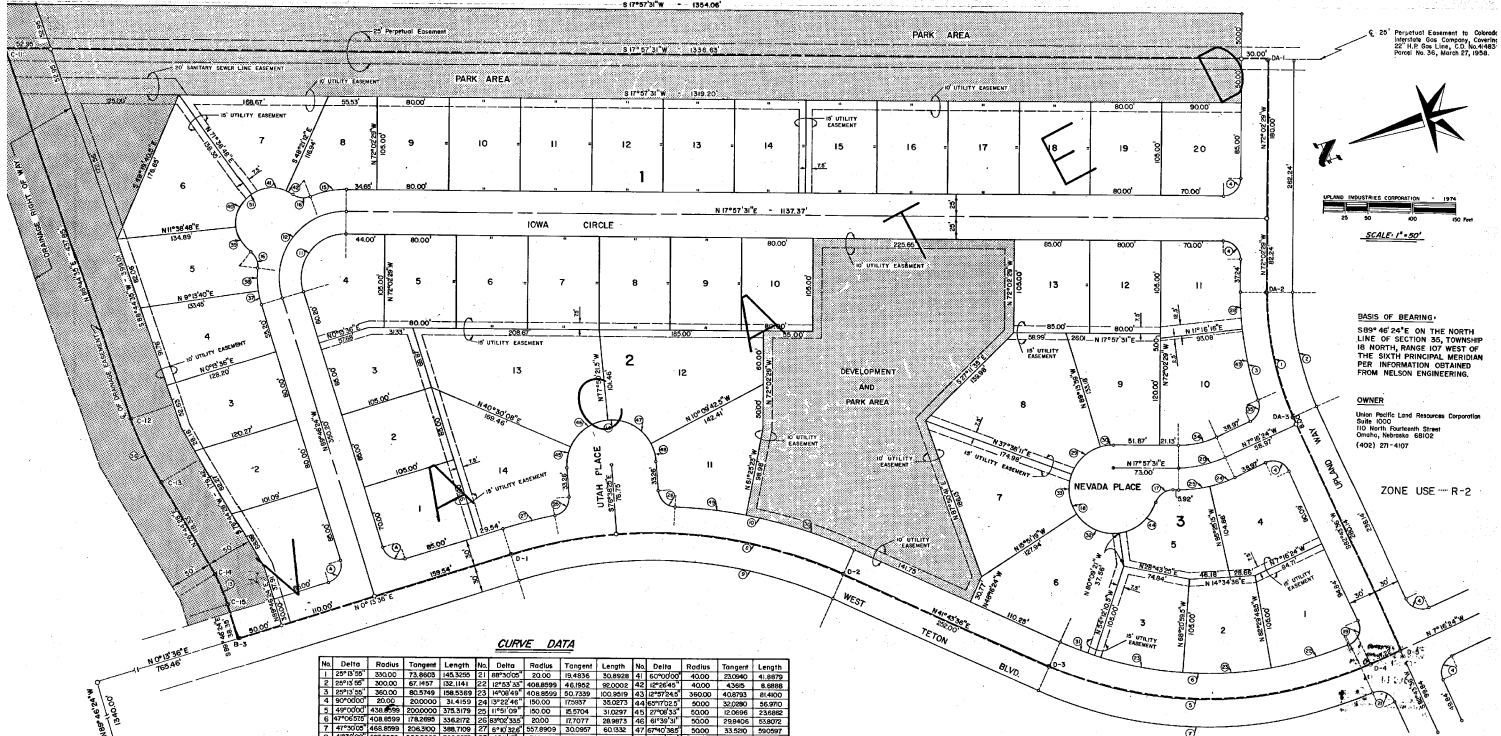
[Signature]
L.S. REGISTRATION NO. 528, STATE OF WYOMING



FINAL FILING PLAT
DUTCH JOHN ADDITION
A SUBDIVISION IN THE TOWN OF GREEN RIVER WYOMING
OMAHA, NEBRASKA 15-8-74 RFW

DUTCH JOHN ADDITION

A SUBDIVISION IN THE TOWN OF GREEN RIVER, WYOMING



BASIS OF BEARING:
 S89°46'24"E ON THE NORTH
 LINE OF SECTION 36, TOWNSHIP
 16 NORTH, RANGE 107 WEST OF
 THE SIXTH PRINCIPAL MERIDIAN
 PER INFORMATION OBTAINED
 FROM NELSON ENGINEERING.

OWNER:
 Upland Industries Corporation
 Suite 1000
 100 North Durbin Street
 Omaha, Nebraska 68102
 (402) 221-4107

ZONE USE - R-2

CURVE DATA

No.	Delta	Radius	Tangent	Length	No.	Delta	Radius	Tangent	Length	No.	Delta	Radius	Tangent	Length
1	2°17'52"	331.02	73.8963	135.3350	21	8°17'52"	30.00	14.8384	30.8988	41	2°07'00"	40.00	20.9440	41.8879
2	3°07'52"	300.00	67.4935	126.1141	22	12°32'30"	100.00	408.8959	44.1901	42	1°17'52"	40.00	43.9611	8.8986
3	3°07'52"	300.00	67.4935	126.1141	23	8°17'52"	50.7339	100.2653	101.2653	43	2°17'52"	350.00	40.7763	81.4900
4	8°07'00"	80.00	20.0000	33.4433	24	2°07'52"	100.00	17.0687	33.0751	44	2°17'52"	40.00	30.0981	58.9101
5	4°07'00"	404.8959	200.0000	375.3719	25	1°17'52"	80.00	18.0794	33.0247	45	1°17'52"	50.00	12.0496	23.6882
6	4°07'00"	404.8959	200.0000	375.3719	26	17°07'52"	30.00	17.0777	33.9573	46	4°07'00"	50.00	29.9408	53.8071
7	4°17'52"	468.8959	248.3000	388.1709	27	8°17'52"	157.8959	30.8957	60.132	47	2°17'52"	50.00	33.5400	59.0997
8	4°17'52"	468.8959	248.3000	388.1709	28	17°07'52"	30.00	21.0288	42.2088	48	1°17'52"	40.00	30.7096	50.5361
9	4°17'52"	468.8959	248.3000	388.1709	29	23°07'52"	50.00	25.0000	46.3609	49	8°17'52"	100.00	40.7763	81.4900
10	4°17'52"	468.8959	248.3000	388.1709	30	17°07'52"	30.00	17.9590	33.0000	50	1°17'52"	50.00	30.0981	58.9101
11	10°17'52"	60.00	16.4848	34.0019	31	17°07'52"	30.00	17.9590	33.0000	51	2°17'52"	157.8959	64.9261	128.0262
12	10°17'52"	60.00	16.4848	34.0019	32	17°07'52"	30.00	17.9590	33.0000	52	2°17'52"	40.00	43.9611	8.8986
13	10°17'52"	60.00	16.4848	34.0019	33	17°07'52"	30.00	17.9590	33.0000	53	1°17'52"	40.00	43.9611	8.8986
14	10°17'52"	60.00	16.4848	34.0019	34	27°07'52"	100.00	52.3689	44.0280	54	1°17'52"	40.00	43.9611	8.8986
15	10°17'52"	60.00	16.4848	34.0019	35	17°07'52"	30.00	18.0888	33.9494	55	1°17'52"	40.00	43.9611	8.8986
16	10°17'52"	60.00	16.4848	34.0019	36	17°07'52"	30.00	18.0888	33.9494	56	1°17'52"	40.00	43.9611	8.8986
17	10°17'52"	60.00	16.4848	34.0019	37	17°07'52"	30.00	18.0888	33.9494	57	1°17'52"	40.00	43.9611	8.8986
18	10°17'52"	60.00	16.4848	34.0019	38	17°07'52"	30.00	18.0888	33.9494	58	1°17'52"	40.00	43.9611	8.8986
19	10°17'52"	60.00	16.4848	34.0019	39	17°07'52"	30.00	18.0888	33.9494	59	1°17'52"	40.00	43.9611	8.8986
20	23°17'52"	125.00	27.8975	50.0475	40	17°07'52"	30.00	17.9590	33.0000	60	17°07'52"	30.00	20.9440	41.8879

LEGEND
 ● Denotes Corner of Plat Boundary. Marker shall be a numbered brass cap set in a body of concrete one foot in diameter, and extended five feet below the cap, and containing the contents of cap.

FINAL FILING PLAT

DUTCH JOHN ADDITION

A SUBDIVISION IN THE TOWN OF GREEN RIVER
WYOMING

UPLAND INDUSTRIES CORPORATION

OMAHA, NEBRASKA

DATE: 12/27/24 DRAWN BY: LAL/RWF

SHEET NO. 2

SCALE: 1"=50'