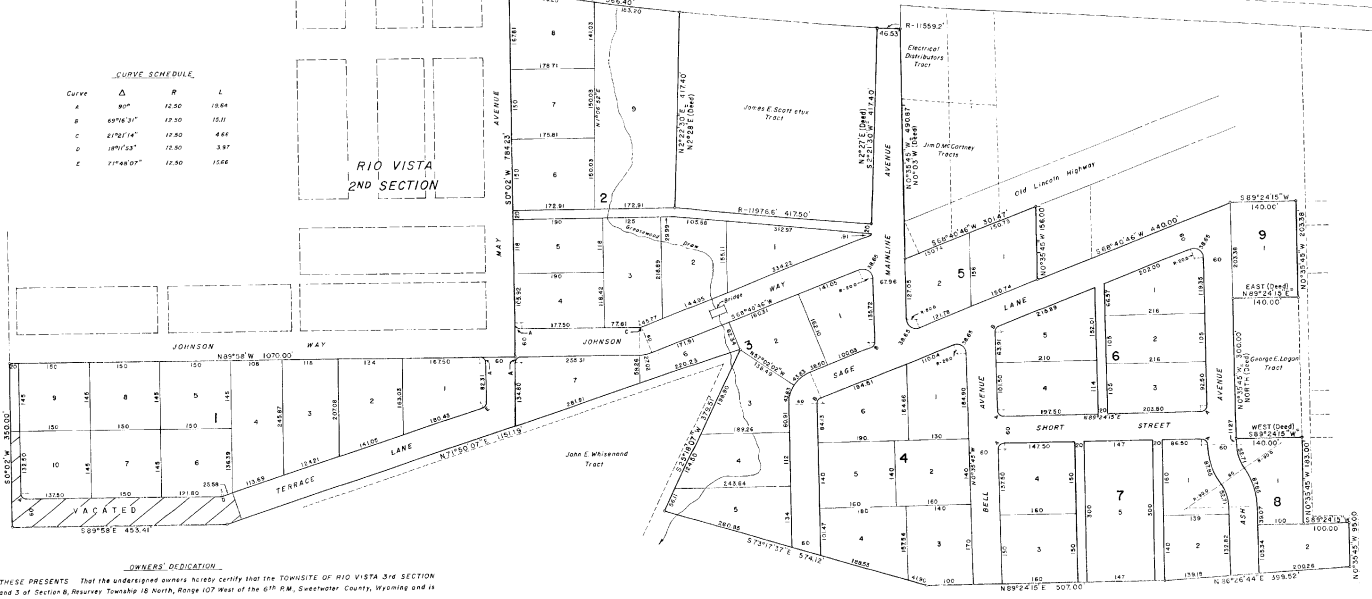




CURVE SCHEDULE

Curve	Δ	R	L
A	90°	42.50	1084
B	69°24'31"	17.30	151
C	27°41'14"	17.50	464
D	18°15'53"	12.50	387
E	17°48'09"	12.50	156



OWNERS' DEDICATION. That the undersigned owners hereby certify that the TOWNSHIP OF RIO VISTA 3rd SECTION is located in Lots 1, 2 and 3 of Section 8, Reserve Township 16 North, Range 107 West of the 6th P.M., Sweetwater County, Wyoming and is more particularly described as follows:

Beginning at a point on the southerly right of way line of U.S. Highway 30, said point of beginning being located South 52°36'28" East a distance of 4406.74 feet from the northwest corner of said Section 8;

thence S 0°00'00" W a distance of 286.53 feet; thence N 68°15'00" W a distance of 1070.00 feet; thence S 0°00'00" W a distance of 330.00 feet; thence S 89°15'00" W a distance of 485.41 feet; thence N 71°50'00" W a distance of 1511.19 feet; thence S 0°00'00" W a distance of 378.51 feet; thence S 12°15'30" E a distance of 674.62 feet; thence N 89°24'15" E a distance of 507.00 feet; thence N 88°26'44" E a distance of 395.52 feet; thence N 0°35'45" W a distance of 140.00 feet; thence S 89°24'15" W a distance of 140.00 feet; thence N 0°35'45" W a distance of 300.00 feet; thence N 89°24'15" E a distance of 140.00 feet; thence N 0°35'45" W a distance of 140.00 feet; thence N 0°35'45" W a distance of 194.00 feet; thence S 89°24'15" W a distance of 440.00 feet; thence N 0°35'45" W a distance of 194.00 feet to a point on the southerly right of way line of the old Lincoln Highway; thence S 68°40'00" W along said right of way line a distance of 30.04 feet; thence N 0°35'45" W a distance of 480.87 feet to a point on the southerly right of way line of U.S. Highway 30, 30.04 feet; thence N 0°35'45" W a distance of 480.87 feet to a point on the southerly right of way line of U.S. Highway 30, 30.04 feet; thence S 87°13'30" W a distance of 417.40 feet; thence westerly, parallel with and 517.40 feet distant 46.53 feet; thence S 87°13'30" W a distance of 417.40 feet; thence westerly, parallel with and 517.40 feet distant 46.53 feet to a point on the southerly right of way line of U.S. Highway 30; thence westerly along the arc of the curve defining said right of way line, the radius of which is 11559.2 feet, a distance of 11559.2 feet; thence S 87°13'30" W a distance of 417.40 feet; thence N 0°35'45" W a distance of 194.00 feet to the point of beginning.

The above described tract of land contains on or near 356.7 acres, more or less.

And the survey and staking thereof into lots, blocks, streets and alleys as appears on this plat is with the free consent and in accordance with the desires of the aboves described lands. That this is a correct plat of said lands, the dimensions being shown by figures representing feet and decimals of a foot. The undersigned owners hereby dedicate to the public use the streets and alleys shown hereon.

IN WITNESS WHEREOF the undersigned owners have caused their signatures to be affixed hereto this 10th day of August 1971.

Bernice Colby
Barbara Colby
Richard Colby

ACKNOWLEDGEMENT.

State of Wyoming ss
 County of Sweetwater ss
 On this 10th day of August, A.D. 1971, there appeared before me the persons whose names are affixed hereto and who after being duly sworn did state that the execution of this instrument was the free act and deed of each person.
 Given under my hand and official seal this 10th day of August, A.D. 1971.

John E. ...
 Notary Public

CERTIFICATE OF ENGINEER.

State of Wyoming ss
 County of Sweetwater ss
 I, *Charles F. ...*, of Rock Springs, Wyoming, a registered Professional Engineer and Land Surveyor, hereby certify that by the authority of the owners whose signatures appear on the accompanying Owners' Declaration it accurately represents the Township of Rio Vista 3rd Section on this plat which is accurately constructed from the field notes of the aforesaid survey.

Charles F. ...
 P.E. & L.S. Reg. No. 545

PARTIALLY VACATED BY RESOLUTION

SEE OFFICIAL MINUTES OF THE BOARD OF COUNTY COMMISSIONERS SWEETWATER COUNTY, WYOMING PAGE 31

APPROVED BY THE BOARD OF COUNTY COMMISSIONERS SWEETWATER COUNTY, WYOMING
 this 10th day of August, A.D. 1971

John E. ...
 County Clerk

PLAT OF
RIO VISTA
 3RD SECTION
 SECTION 8, T16N, R107W
 SWEETWATER COUNTY, WYOMING

SCALE - 1" = 100'
 3-12-71

JOHNSON-FORRELLA & CRANK, INC.
 CONSULTING ENGINEERS & LAND SURVEYORS
 ROCK SPRINGS, WYOMING